

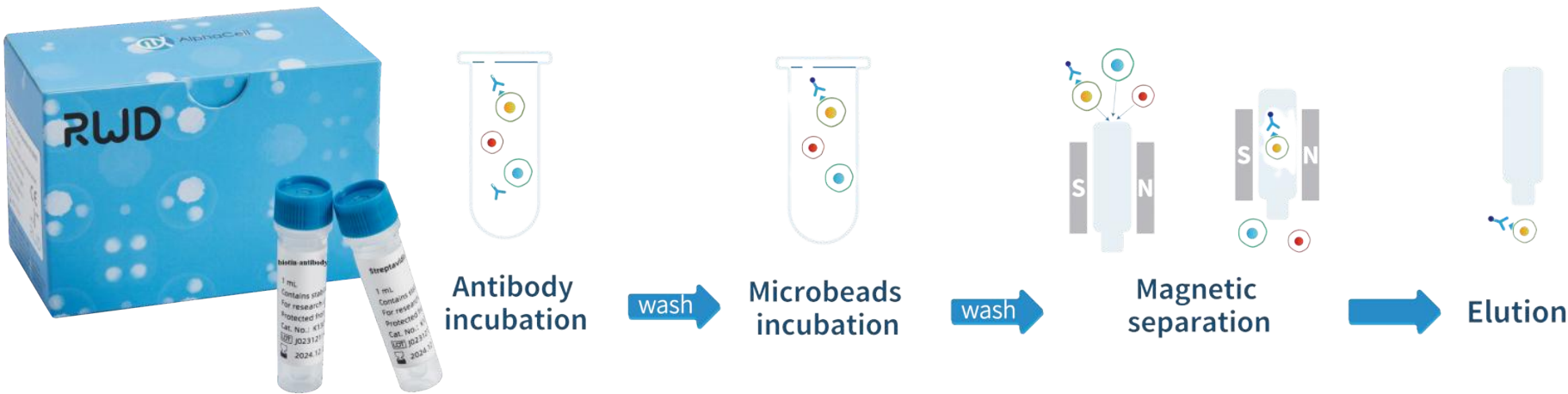
RWD

2025-2026

Consumables Catalog



Magnetic Microbeads Cell Separation Products



Mouse Columned Cell Separation Kit

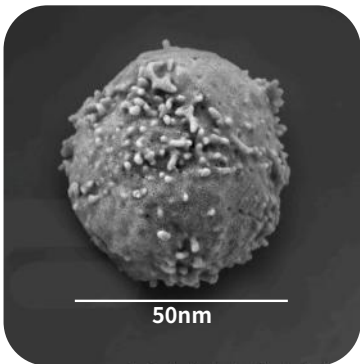
- K1301-10 Mouse CD 3+ Cell Separation Kit, 1mL*2 for 10^9 total cells
- K1302-10 Mouse CD 4+ Cell Separation Kit, 1mL*2 for 10^9 total cells
- K1303-10 Mouse CD 8+ Cell Separation Kit, 1mL*2 for 10^9 total cells
- K1306-10 Mouse CD 11b+ Cell Separation Kit, 1mL*2 for 10^9 total cells
- K1305-10 Mouse CD 19+ Cell Separation Kit, 1mL*2 for 10^9 total cells
- K1304-10 Mouse CD 45+ Cell Separation Kit, 1mL*2 for 10^9 total cells
- K1307-10 Mouse Pan B Cell isolation Kit

Cell Separation Columns and Stands

- HCSC-25 LarSep Columns (25pc/box)
- HCSC-10 LarSep Columns (10pc/box)
- LSC-S1 LSC Separator (single channel)
- SS01 Separation Stand
- CSAK-01 Cell Separation Starter Kit

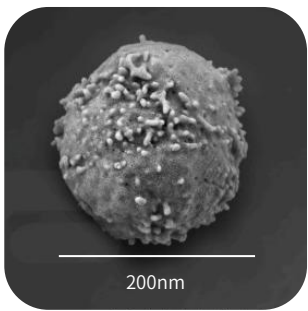
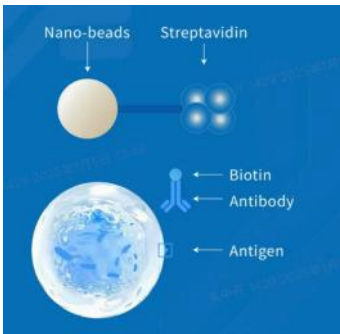
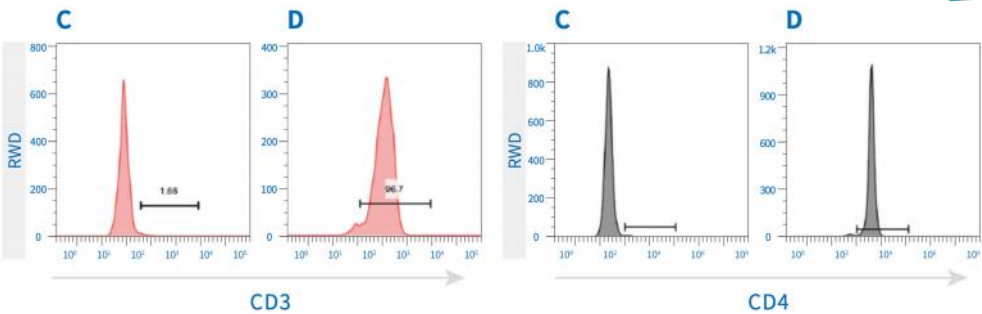
Streptavidin Nano-Magnetic beads

- K1200-10 Streptavidin Nano-Magnetic beads



Human Columned Cell Separation Kit

- K1201-10 Human CD 3+ Cell Separation Kit, 1mL*2 for 10^9 total cells
- K1202-10 Human CD 4+ Cell Separation Kit, 1mL*2 for 10^9 total cells
- K1203-10 Human CD 8+ Cell Separation Kit, 1mL*2 for 10^9 total cells
- K1204-10 Human CD 14+ Cell Separation Kit, 1mL*2 for 10^9 total cells
- K1206-10 Human CD 19+ Cell Separation Kit, 1mL*2 for 10^9 total cells
- K1205-10 Human CD 45+ Cell Separation Kit, 1mL*2 for 10^9 total cells
- K1207-10 Human NK Negative Selection Kit, 1mL*2 for 10^9 total cells
- K1209-10 Human CD71+ Cell Separation Kit



Mouse Columnless Cell Separation Kit

- C1209-10 Human CD71+ Cell Separation Kit-CF
- F1501-10 Mouse Pan B Cell isolation Kit-CF
- F1502-10 Mouse NK Cell isolation Kit-CF
- F1506-10 Mouse naïve CD4 T cell Isolation Kit-CF
- F1505-10 Mouse naïve CD8 T cell Isolation Kit-CF

Columnless Cell Separator Magnet

- CFMS-S1 Magnetic cell separator-CF (single channel)

Ask About Our:
RWD High Speed Refrigerated Centrifuge

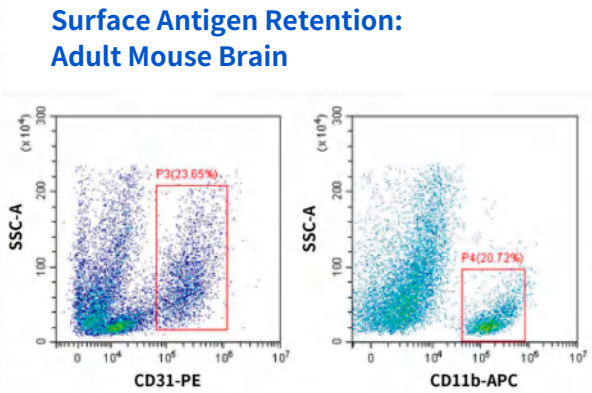
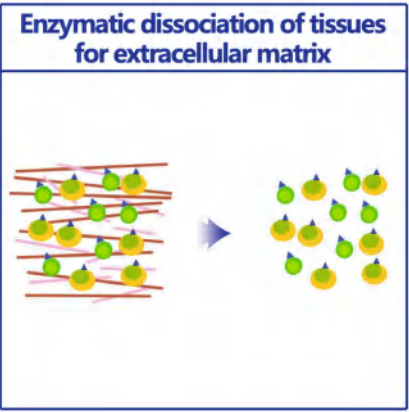
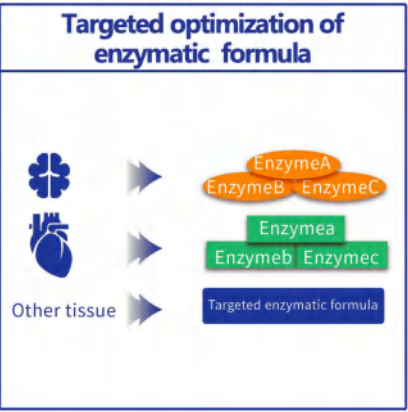


Ask About Our:
RWD CO2 Incubator



Ask About Our:
RWD Automated
Tissue Dissociator

- Available in:
- 2 Channels
 - 4 Channels
 - 8 Channels

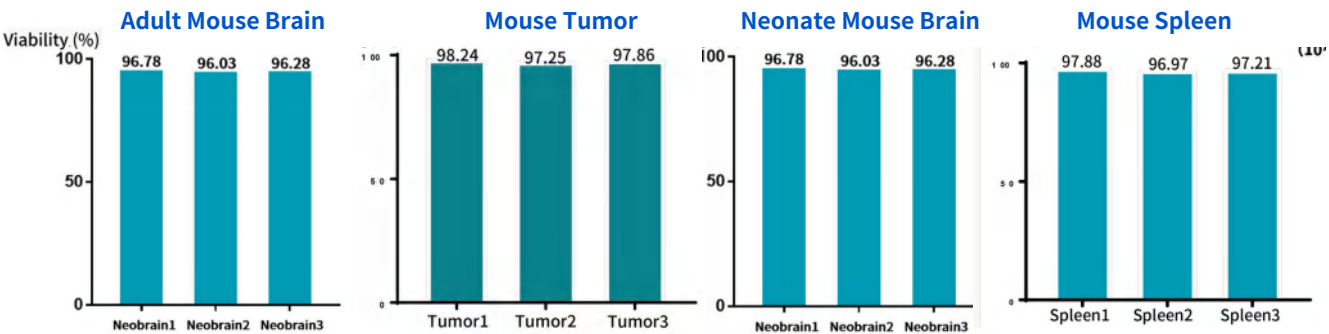
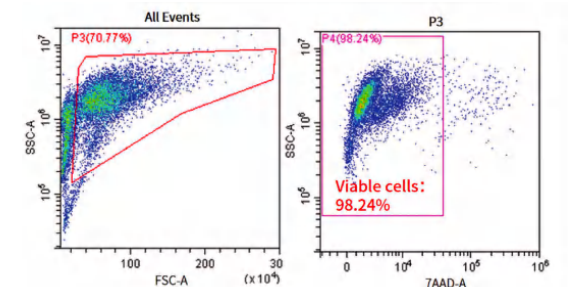


RWD | Tissue Enzymatic Digestion Kit
ENZYMATIC DIGESTION KIT

- Features:**
- Targeted optimization of enzymatic hydrolysis formula can ensure high cell viability.
 - Preserving cell surface epitopes leads to no effect for downstream experiments.

- | | |
|------------|-----------------------------------------------------------------------------|
| DHTE-5001 | High Activity Tumor Tissue Enzymatic Digestion Kit (Mouse) |
| DHABE-5003 | High Activity Adult Brain Tissue Enzymatic Digestion Kit (Mouse) |
| DHGT-5004. | High Activity General Tissue Enzymatic Digestion Kit (Mouse) |
| DHIE-5007 | High Activity Intestine Tissue Enzymatic Digestion Kit (Mouse) |
| DHBTE-2508 | High Activity Brain Tumor Tissue Enzymatic Digestion Kit (Mouse) |
| DHWSE-2509 | High Activity Whole Skin Tissue Enzymatic Digestion Kit (Mouse) |
| DHAE-5010 | High Activity Adipose Tissue Enzymatic Digestion Kit (Mouse and Rat) |
| DHNBE-5002 | High Activity Neonatal Brain Tissue Enzymatic Digestion Kit (Mouse and Rat) |
| DHTEH-2505 | High Activity Tumor Tissue Enzymatic Digestion Kit (Human) |
| DHDR-5006 | High Efficiency Debris Removal Kit |

Surface Antigen Retention: Mouse Cancer tissue



Ask About Our:
RWD Fluorescence
Automatic Cell Counter



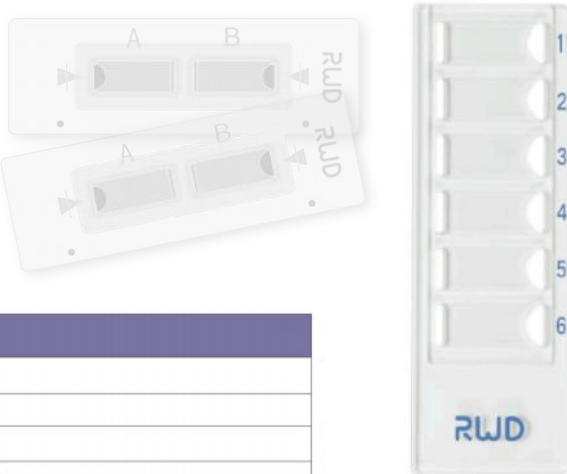
RWD | Tissue Processing Tube
TISSUE PROCESSING TUBE

- Tissue Processing Tube**
- SCT-25 Tissue Processing Tubes, 25pc/box
- SCT-100 Tissue Processing Tubes, 100pc/box



RWD | Disposable Slide
DISPOSABLE SLIDE

- Automatic Cell Counting Slides**
- DS-50 Disposable Slide (50 pcs/case)
- DS-500 Disposable Slide (50 pcs/case, 10 case/box)
- High Throughput Cell Counting Slides**
- DS-66 6 Channels Cell Counting Slide (50 pcs/box)

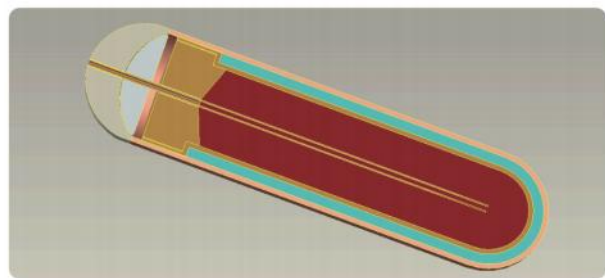
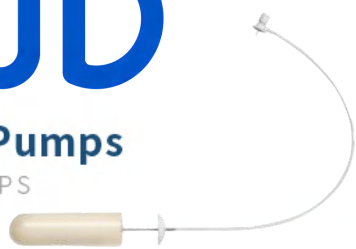


Parameters	Description
Model	DS-66
Chamber volume	20uL
Number of chambers	6
Dimensions of slide	75mm*25mm*2.1mm
Dimensions of chamber	16.2mm*6.2mm*0.2mm
Package	50PCS/box

RWD

| Osmotic Pumps

OSMOTIC PUMPS



- Implanted Solution
- Reduce handling stress
- Quick Recovery
- Constant Delivery Rate

RWD Osmotic Pumps for Mice

1003D	OSMOTIC PUMP - 100μL - 3 Days (10 pcs/box)
1001W	OSMOTIC PUMP - 100μL - 1 Week (10 pcs/box)
1002W	OSMOTIC PUMP - 100μL - 2 Week (10 pcs/box)
1004W	OSMOTIC PUMP - 100μL - 4 Week (10 pcs/box)

RWD Osmotic Pumps for Rat

2003D	OSMOTIC PUMP - 200μL - 3 Days (10 pcs/box)
2001W	OSMOTIC PUMP - 200μL - 1 Week (10 pcs/box)
2002W	OSMOTIC PUMP - 200μL - 2 Week (10 pcs/box)
2004W	OSMOTIC PUMP - 200μL - 4 Week (10 pcs/box)

RWD Osmotic Pumps for Big Animals

2mL1W	OSMOTIC PUMP - 2mL - 1 Week (10 pcs/box)
2mL2W	OSMOTIC PUMP - 2mL - 2 Week (10 pcs/box)
2mL4W	OSMOTIC PUMP - 2mL - 4 Week (10 pcs/box)



subcutaneous

intracranial

Intraperitoneal

intravenous

Brian Infusion Kits

BIC-3	For 1-3mm deep brain area	10pc/box
BIC-5	For 3-5mm deep brain area	10pc/box

Muscle Infusion Kits

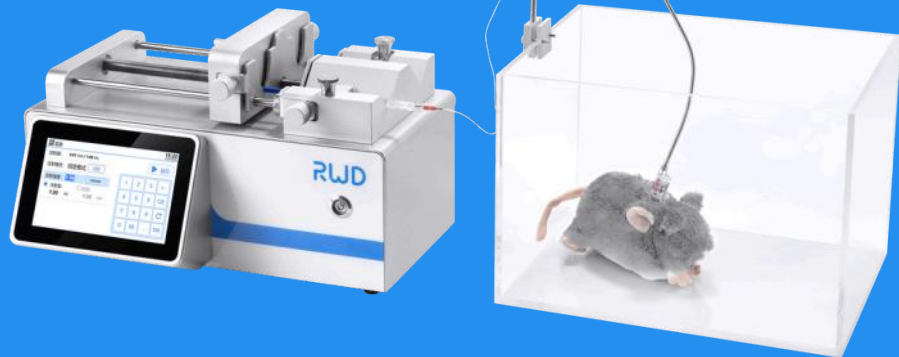
MIC	For muscle administration.	10pc/box
-----	----------------------------	----------

RWD

| Vascular Infusion and Sampling System For Small Animals

VASCULAR INFUSION AND SAMPLING SYSTEM FOR SMALL ANIMALS

Ask About Our: RWD Microinjection Pumps Compatible with All RWD Drug Delivery Systems



Free Moving Tether

TM-1	Tether, Single Channel for Mice	5pcs/pkg
TM-2	Tether, Dual Channel for Mice	5pcs/pkg
TR-1dr	Tether, Single Channel for Rats, Specific for Drug Infusion	5pcs/pkg
TR-1bl	Tether, Single Channel for Rats, Specific for Blood Collection	5pcs/pkg
TR-2	Tether, Dual Channel for Rats	5pcs/pkg

Swivel Mount

SS1-22	Swivel Mount for Mice	1pcs/pkg
SS1-25	Swivel Mount for Rats	1pcs/pkg
SS1-22	Single Channel Swivels 22G	1pcs/pkg
SS1-25	Single Channel Swivels 25G	1pcs/pkg



Implant Kits

RJZ-P1	Rat Jugular Vein Implant Kit, 10 set, Single Channel
RCA-B1	Rat Carotid Artery Implant Kit, 10 set, Single Channel
MJV-P1	Mouse Jugular Vein Implant Kit, 10 set, Single Channel
MAC-B1	Mouse Carotid Artery Implant Kit, 10 set, Single Channel

Implant Button Cap for Mice

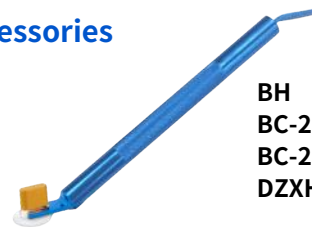
CMSC-S	Implant Button Cap, Single Channel, Silver	5pcs/pkg
CMSC-G	Implant Button Cap, Single Channel, Gold	5pcs/pkg
CMDC-D	Implant Button Cap, Dual Channel, Silver	5pcs/pkg
CMDC-G	Implant Button Cap, Dual Channel, Gold	5pcs/pkg

Implant Button Cap for Rat

CRSC-S	Implant Button Cap, silver	5pcs/pkg
CRSC-G	Implant Button Cap, gold	5pcs/pkg



Accessories



BH	Mice Handling Tool	1pcs/pkg
BC-22	Bulk Catheter 22	10m/pkg
BC-25	Bulk Catheter 25	10m/pkg
DZXHQ	Bile Loop	5pcs/pkg

Implant Button for Mice

BMS25	Implant Button Single channel 25G	5pcs/pkg
BMD25/25	Implant Button Dual channel 25G	5pcs/pkg



Implant Button for Rat

BRSE22	Implant Button Single Channel 22G, white	5pcs/pkg
BRSR22	Implant Button Single Channel 22G, red	5pcs/pkg
BRD22/22	Implant Button Dual Channel 22G	5pcs/pkg

Carotid Artery Catheters

PUMCA	Carotid Artery Catheters for Mice	5pcs/pkg
PUMJV	Jugular Vein Catheters for mice	5pcs/pkg
PUCJV	Carotid Artery Catheters for Guinea Pigs	5pcs/pkg
PUCCA	Jugular Vein for Guinea Pigs	5pcs/pkg
PURCA	Carotid Artery Catheters for Rats	5pcs/pkg
PURLV	Jugular Vein Catheter for Rats	5pcs/pkg
PURBD	Bile Duct Catheter for Rats	5pcs/pkg

PharmPort

P22-R	PharmPort, 22G Red	5pcs/pkg
P22-W	PharmPort, 22G White	5pcs/pkg
P25-R	PharmPort, 25G Red	5pcs/pkg
P25-W	PharmPort, 25G Red	5pcs/pkg



Catheter Connectors

C22	Catheter Connector, 22G	5pcs/pkg
C25	Catheter Connector, 25G	5pcs/pkg
SC-1	Syringe Connector	6pcs/pkg



RWD

| RE20 Animal Endotracheal Intubation Kit

RE20-R	Endotracheal Intubation tube for rat, 50mm
RE20-M	Endotracheal Intubation tube for mouse, 20mm



I Microinjection Cannula

MICROINJECTION CANNULA

The **Single Cannula** has a **Pedestal diameter of 6mm/8mm** and can be customized from **1-15mm** with a **projection of 0.5-15mm** to reach the desire brain region with stereotaxic surgery.

26 Gauge Single Cannula

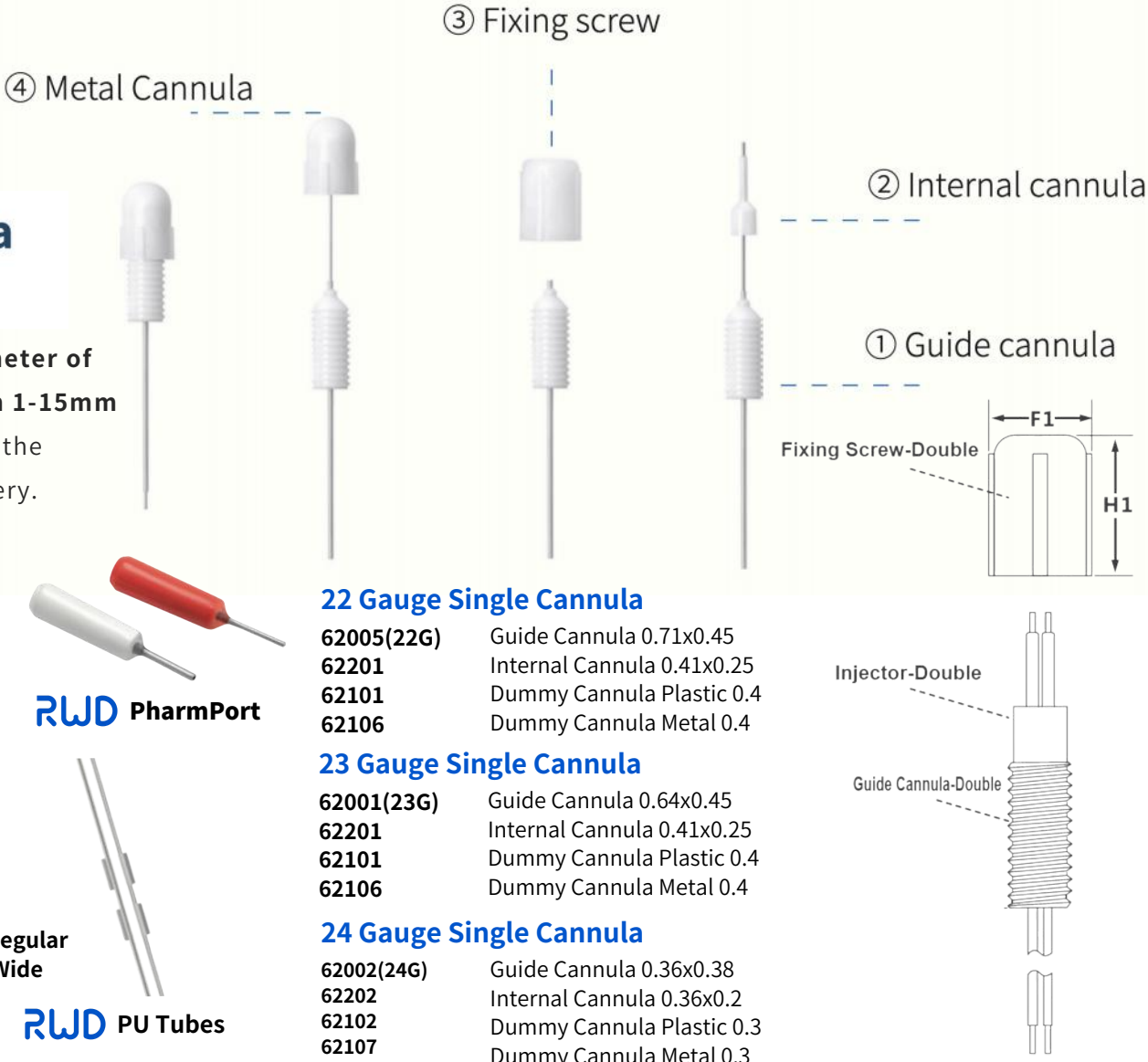
- 62003(26G) Guide Cannula 0.48x0.34
- 62203 Internal Cannula 0.3x0.14
- 62102 Dummy Cannula Plastic 0.3
- 62107 Dummy Cannula Metal 0.3

27 Gauge Single Cannula

- 62004(27G) Guide Cannula 0.41x0.25
- 62204 Internal Cannula 0.21x0.11
- 62104 Dummy Cannula Plastic 0.2
- 62108 Dummy Cannula Metal 0.2

Fixing Screw and Caps

- 62502 Fixing Screw for Single Cannula
- 62521 Fixing Screw for Double Cannula, **Regular**
- 62528 Fixing Screw for Double Cannula, **Wide**
- 62523 Caps for Double Cannula, **Regular**
- 62527 Caps for Double Cannula, **Wide**



The **Series I Double Cannula (26G), E=3.5mm** consists of two **guide cannula with O.D.0.48mmxI.D.0.34 mm** Dummy Cannula O.D.0.30mm and Internal Cannula: O.D.0.30mm x I.D.0.14mm the Plastic Pedestal of Guide Cannula has a Height B = 7.8mm and Diameter E = 3.5mm

Regular

C.C	Guide Cannula	Internal Cannula	Dummy Cannula
0.6	62022	62250	62122
0.8	62023	62223	62123
1.0	62024	62224	62124
1.2	62025	62225	62125
1.4	62027	62227	62127
1.5	62028	62228	62128
1.6	62029	62229	62129
1.8	62030	62230	62130
2.0	62031	62231	62131

The **Series I Double Cannula (26G), E=5.5mm** consists of two **guide cannula with O.D.0.48mmxI.D.0.34 mm** Dummy Cannula O.D.0.30mm and Internal Cannula: O.D.0.30mm x I.D.0.14mm the Plastic Pedestal of Guide Cannula has a Height B = 7.8mm and Diameter E = 5.5mm

Wide

C.C	Guide Cannula	Internal Cannula	Dummy Cannula
2.2	62072	62150	62272
2.4	62073	62151	62273
2.6	62074	62152	62274
3	62075	62153	62275
3.2	62076	62154	62276

The **Series II Double Cannula (23G), E=3.5mm** consists of two **guide cannula with O.D.0.64mmx I.D.0.45 mm** Dummy Cannula: O.D.0.40mm and Internal Cannula: O.D.0.41mm x I.D.0.25mm. The Plastic Pedestal of Guide Cannula has a Height B = 7.8mm and Diameter E = 3.5 mm

Regular

C.C	Guide Cannula	Internal Cannula	Dummy Cannula
0.8	62037	62237	62137
1.0	62038	62238	62138
1.2	62039	62239	62139
1.4	62041	62241	62141
1.5	62042	62242	62142
1.8	62043	62243	62143

The **Series II Double Cannula (23G), E=5.5 mm** consists of two **guide cannula with O.D.0.64mmx I.D.0.45 mm** Dummy Cannula: O.D.0.40mm and Internal Cannula: O.D.0.41mm x I.D.0.25mm. The Plastic Pedestal of Guide Cannula has a Height B = 7.8mm and Diameter E = 5.5 mm

Wide

C.C	Guide Cannula	Internal Cannula	Dummy Cannula
2.0	62077	62155	62277
2.2	62078	62156	62278
2.4	62079	62157	62279
3.0	62080	62158	62280
3.2	62081	62159	62281

The **Series III Double Cannula (26G), E=3.5mm** consists of two **guide cannula with O.D.0.48mmxI.D.0.34 mm**, Dummy Cannula: O.D.0.30mm and Internal Cannula: O.D.0.30mm x I.D.0.14mm. The Plastic Pedestal of Guide Cannula has a Height B = 5.5mm and Diameter E = 3.5mm

Regular

C.C	Guide Cannula	Internal Cannula	Dummy Cannula
0.8	62052	62223	62123
1.0	62053	62224	62124
1.2	62054	62225	62125
1.4	62056	62227	62127
1.5	62057	62228	62128
1.6	62058	62229	62129
1.8	62059	62230	62130
2.0	62060	62231	62131

The **Series IV Double Cannula (27G), E=3.5mm** consists of two **guide cannula with O.D.0.41mm x I.D.0.25 mm**, Dummy Cannula O.D.0.20mm and Internal Cannula O.D.0.21mm x I.D.0.11mm. The Plastic Pedestal of Guide Cannula has a Height B = 7.8mm and Diameter E = 3.5mm.

Regular

C.C	Guide Cannula	Internal Cannula	Dummy Cannula
0.6	62062	62251	62162
0.8	62063	62263	62163
1.0	62064	62264	62164
1.2	62065	62265	62165
1.4	62067	62267	62167
1.5	62068	62268	62168
1.6	62069	62269	62169
1.8	62070	62270	62170
2.0	62071	62271	62171

Fiber-optic Cannulas

- Material: Ceramic, Optical fiber
- Type: White Series/Black Series
- Applicable wavelength: 400-2200nm
- Optical fiber length: 2mm-25mm (Φ1.25mm),2mm-20mm (Φ2.5mm).step 0.5mm (Other lengths can be customized)
- Low auto-fluorescence



L Series Ø1.25mm Ceremic Ferrule, White

NA\Core Diameter	200 um	300 um	400 um
0.22	R-FOC-L200C-22NA	R-FOC-L300C-22NA	R-FOC-L400C-22NA
0.39	R-FOC-L200C-39NA	R-FOC-L300C-39NA	R-FOC-L400C-39NA
0.50	R-FOC-L200C-50NA	R-FOC-L300C-50NA	R-FOC-L400C-50NA

L Series Ø1.25mm Ceremic Ferrule, Black

NA\Core Diameter	200 um	300 um	400 um
0.22	R-FOC-BL200C-22NA	R-FOC-BL300C-22NA	R-FOC-BL400C-22NA
0.39	R-FOC-BL200C-39NA	R-FOC-BL300C-39NA	R-FOC-BL400C-39NA
0.50	R-FOC-BL200C-50NA	R-FOC-BL300C-50NA	R-FOC-BL400C-50NA

F Series Ø2.5mm Ceremic Ferrule, White

NA\Core Diameter	200 um	300 um	400 um
0.22	R-FOC-F200C-22NA	R-FOC-F300C-22NA	R-FOC-F400C-22NA
0.39	R-FOC-F200C-39NA	R-FOC-F300C-39NA	R-FOC-F400C-39NA
0.50	R-FOC-F200C-50NA	R-FOC-F300C-50NA	R-FOC-F400C-50NA

F Series Ø2.5mm Ceremic Ferrule, Black

NA\Core Diameter	200 um	300 um	400 um
0.22	R-FOC-BF200C-22NA	R-FOC-BF300C-22NA	R-FOC-BF400C-22NA
0.39	R-FOC-BF200C-39NA	R-FOC-BF300C-39NA	R-FOC-BF400C-39NA
0.50	R-FOC-BF200C-50NA	R-FOC-BF300C-50NA	R-FOC-BF400C-50NA

Patchcord and Optical Fiber

- Low insertion loss • Good repeatablity • High return loss
- Stable temperature • Low auto-fluorescence
- Good mutual insertion performance • Optional fiber
- Applicable wavelength: 400nm-1100nm
- Numerical aperture: 0.22, 0.39, 0.50
- Default length is 1m, other length:1.5-5m, step 0.5m (customized)



Patchcord



Optical Fiber

FC/PC Optical Fiber Patch Cables, 1m

NA\Core Diameter	100 um	200 um	300 um	400 um
0.22	R-FC-PC-N2-100-L1	R-FC-PC-N2-200-L1	R-FC-PC-N2-300-L1	R-FC-PC-N2-400-L1
0.39		R-FC-PC-N3-200-L1	R-FC-PC-N3-300-L1	R-FC-PC-N3-400-L1
0.50		R-FC-PC-N5-200-L1		R-FC-PC-N5-400-L1

Optic Fiber(m), FC/PC Adapter with Φ1.25 mm Ceramic Ferrule, 1m

NA\Core Diameter	100 um	200 um	300 um	400 um
0.22	R-FC-L-N2-100-L1	R-FC-L-N2-200-L1	R-FC-L-N2-300-L1	R-FC-L-N2-400-L1
0.39		R-FC-L-N3-200-L1	R-FC-L-N3-300-L1	R-FC-L-N3-400-L1
0.50		R-FC-L-N5-200-L1		R-FC-L-N5-400-L1

Optic Fiber(m), FC/PC Adapter with Φ2.5 mm Ceramic Ferrule, 1m

NA\Core Diameter	100 um	200 um	300 um	400 um
0.22	R-FC-P-N2-100-L1	R-FC-P-N2-200-L1	R-FC-P-N2-300-L1	R-FC-P-N2-400-L1
0.39		R-FC-P-N3-200-L1	R-FC-P-N3-300-L1	R-FC-P-N3-400-L1
0.50		R-FC-P-N5-200-L1		R-FC-P-N5-400-L1



Fusion Fibers



Lasor Power Meter



Fiber Optic Rotary Joint

R-FC 1x1 FC-FC Optoc Fiber Commutator

Ceramic Sleeves

R-MS-1.25 Ceramic Sleeves,Φ1.25mm, 20pcs/pkg
R-MS-2.5 Ceramic Sleeves,Φ2.5mm, 20pcs/pkg

Black Ceramic Sleeves

R-BMS-1.25 Black Ceramic Sleeves,Φ1.25mm, 20pcs/pkg
R-BMS-2.5 Black Ceramic Sleeves,Φ2.5mm, 20pcs/pkg

Protective Cap

r-DC-2.5 FC/PC Ferrule Cap- Φ2.50mm (200pcs/pkg)
R-DC-1.25 LC/PC Ferrule Cap- Φ1.25mm (200pcs/pkg)

Ask About Our: RWD Multichannel Fiber Photometry System



RWD Optogenetics Laser Stimulation System





RWD MCAO suture utilizes high-quality nylon thread to induce ischemic stroke model. The within-group variation of stroke models can be maximally reduced by the super smooth surface and evenness of RWD suture. And without rupturing the vesicle. RWD suture makes its insertion into the animal brain much easier. The stability is also greatly increased for the cerebral ischemia modeling and more consistent data.

I MCAO Sutures

MCAO SUTURES

mCAO Suture for Mice,Silicon Diameter 0.17-0.19, Length 3-4, for 15-20g animals

- MSMC19B007PK50 mCAO Suture, Suture Diameter 0.07, total length 30 mm, pack of 50
- MSMC19B008PK50 mCAO Suture, Suture Diameter 0.08, total length 30 mm, pack of 50
- MSMC19B100PK50 mCAO Suture, Suture Diameter 0.1, total length 30 mm, pack of 50

mCAO Suture for Mice,Silicon Diameter 0.20-0.21, Length 3-4, for 21-25g animals

- MSMC21B007PK50 mCAO Suture, Suture Diameter 0.07, total length 30 mm, pack of 50
- MSMC21B008PK50 mCAO Suture, Suture Diameter 0.08, total length 30 mm, pack of 50
- MSMC21B100PK50 mCAO Suture, Suture Diameter 0.1, total length 30 mm, pack of 50
- MSMC21B120PK50 mCAO Suture, Suture Diameter 0.12, total length 30 mm, pack of 50

mCAO Suture for Mice,Silicon Diameter 0.22-0.23, Length 3-4, for 26-30g animals

- MSMC23B007PK50 mCAO Suture, Suture Diameter 0.07, total length 30 mm, pack of 50
- MSMC23B008PK50 mCAO Suture, Suture Diameter 0.08, total length 30 mm, pack of 50
- MSMC23B100PK50 mCAO Suture, Suture Diameter 0.1, total length 30 mm, pack of 50
- MSMC23B120PK50 mCAO Suture, Suture Diameter 0.12, total length 30 mm, pack of 50

mCAO Suture for Mice,Silicon Diameter 0.24-0.25, Length 3-4, for 31-35g animals

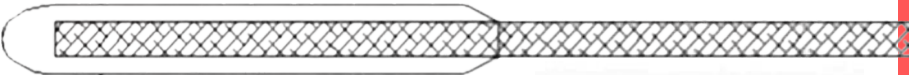
- MSMC25B120PK50 mCAO Suture, Suture Diameter 0.12, total length 30 mm, pack of 50
- MSMC25B150PK50 mCAO Suture, Suture Diameter 0.15, total length 30 mm, pack of 50

mCAO Suture for Mice,Silicon Diameter 0.24-0.25, Length 3-4, for >35g animals

- MSMC26B150PK50 mCAO Suture, Suture Diameter 0.15, total length 30 mm, pack of 50

mCAO Suture for Rat, total length 50 mm

- MSRC32B200PK50 mCAO Suture,Silicon Diameter 0.31-0.32,Suture Diameter 0.2, for <200g animals, pack of 50
- MSRC35B200PK50 mCAO Suture,Silicon Diameter 0.33-0.35,Suture Diameter 0.2, for 200-250g animals, pack of 50
- MSRC37B200PK50 mCAO Suture,Silicon Diameter 0.36-0.37,Suture Diameter 0.2, for 251-280g animals, pack of 50
- MSRC40B200PK50 mCAO Suture,Silicon Diameter 0.38-0.40,Suture Diameter 0.2, for 281-330g animals, pack of 50
- MSRC42B200PK50 mCAO Suture,Silicon Diameter 0.41-0.42,Suture Diameter 0.2, for 331-400g animals, pack of 50
- MSRC45B200PK50 mCAO Suture,Silicon Diameter 0.43-0.45,Suture Diameter 0.2, for >400g animals, pack of 50



Ask About Our:

RWD Laser Speckle

Vascular Imaging System



RWD I Gas Filter Canister

GAS FILTER CANISTER

available at

Used to absorb isoflurane, sevoflurane and enflurane and other gasesdisposable, large and small size are available, large canister (net weight: 800g)absorb 200-240g gas; small canister (net weight: 250g) absorb 50g gas.

Gas Filter Canisters

- R510-31-6 Gas Filter Canister Large, pkg of 6
- R510-31S-6 Gas Filter Canister Small, pkg of 6
- R510-31S-16 Gas Filter Canister Small, pkg of 16



RWD Glass Capillary Tubes

GLASS CALIARRY TUBES

Borosilicate glass with filament (O.D. × I.D. × L)

- B-10050-10F 200 1.0×0.5×100mm,200 pcs
- B-10078-10F 1.0×0.78×100mm,200 pcs
- B-12069-10F 1.2×0.69×100mm ,200 pcs
- B-12094-10F 1.2×0.94×100mm ,200 pcs
- B-15086-10F 1.5×0.86×100mm ,200 pcs
- B-150110-10F 1.5×1.1×100mm ,200 pcs
- B-15086-8.5F 1.5×0.86×85mm ,200 pcs
- B-150110-8.5F 1.5×1.1×85mm ,200 pcs



Ask About Our:

RWD Animal Surgery

Gas Anesthetics Suite



Approved for Saving Pandas by YHWCA



RWD

| Surgery Tools
SURGERY TOOLS

Ask About Our:

RWD Fully Automated
Stereotaxic Surgery System



Straight



S12034-12

- Cutting Edge: 17mm
- Width: 6mm
- Length: 12.5cm

S12005-10

- Cutting Edge: 23mm
- Width: 5mm
- Length: 10.5cm

S12003-09

- Cutting Edge: 24.5mm
- Width: 5mm
- Length: 9cm

S12011-12

- Cutting Edge: 31mm
- Width: 5.8mm
- Length: 12.5cm

Curved



S12006-10

- Cutting Edge: 22mm
- Width: 4.5mm
- Length: 10.5cm

S12010-11

- Cutting Edge: 23.5mm
- Width: 6mm
- Length: 11.5cm

S12004-09

- Cutting Edge: 24mm
- Width: 4.6mm
- Length: 9.5cm

S12031-11

- Cutting Edge: 29mm
- Width: 6mm
- Length: 11.5cm



Straight



S11001-08

- Cutting Edge: 8mm
- Width: 1.5mm
- Length: 8mm

S11035-08

- Cutting Edge: 3.5mm
- Width: 1.3mm
- Length: 8mm

S11036-08

- Cutting Edge: 8.2mm
- Width: 1.5mm
- Length: 8mm

S11007-12

- Cutting Edge: 19mm
- Width: 4.25mm
- Length: 12.5mm

S11019-14

- Cutting Edge: 14.5mm
- Width: 3.2mm
- Length: 14cm

S11014-12

- Cutting Edge: 5.5mm
- Width: 1.9mm
- Length: 12.5cm

Curved



S11002-08

- Cutting Edge: 8mm
- Width: 1.5mm
- Length: 8mm

S11037-08

- Cutting Edge: 8mm
- Width: 1.5mm
- Length: 8mm

S11008-12

- Cutting Edge: 14mm
- Width: 3.2mm
- Length: 12mm

S11022-14

- Cutting Edge: 14.5mm
- Width: 3.2mm
- Length: 14mm

Angled



S11003-08

- Cutting Edge: 6.3mm
- Width: 1.35mm
- Length: 8.5mm



Flat



Triangular



Sharp



S14014-10

- Cutting Edge: 32.7mm
- Width: 8.45mm
- Length: 10.5mm

S14014-12

- Cutting Edge: 37.6mm
- Width: 8.6mm
- Length: 12.5mm

S14014-13

- Cutting Edge: 45mm
- Width: 9.8mm
- Length: 13mm

S14014-15

- Cutting Edge: 48mm
- Width: 10mm
- Length: 15.5mm

Blunt



S13050-15

- Cutting Edge: 32.7mm
- Width: 8.45mm
- Length: 15mm



Scalpel

Cat.No: S33006-13

- Straight/13cm
- Cutting Edge(Length): 2
- Width: 3mm



Scalpel Handles(3#)

Cat.No: S32003-12

- 12.5cm



Scalpel Handles(4#)

Cat.No: S32004-13

- 14cm



Scalpel Blades(4#)

Cat.No: S31010-01

- Box of 100 pcs



Scalpel Blades(11#)

Cat.No: S31011-01

- Box of 100 pcs



Scalpel Blades(12#)

Cat.No: S31012-01

- Box of 100 pcs



Scalpel Blades(15#)

Cat.No: S31015-01

- Box of 100 pcs



Stitch Scissors

Cat.No: S15006-09

- Curved/9.5cm
- Sharp&Sharp
- Cutting Edge(Length): 13.5mm
- Width: 4mm



Artery Forceps

Cat.No: F21001-12

- Straight/12.5cm
- Width: 1mm



Cat.No: F21002-12

- Curved/12.5cm
- Width: 1mm



Cover Glass Forceps

Cat.No: F18015-10

- Straight/10.5cm
- Width: 4mm



Cat.No: F18001-10

- Curved/10.5cm
- Width: 5.4mm



Artery Forceps

Cat.No: F21019-16

- Straight/16cm
- Width: 1mm



Cat.No: F22003-10

- Curved/10cm
- Width: 1mm



Cat.No: F21020-16

- Curved/16cm
- Width: 1.5mm



Cat.No: F21011-14

- Straight/14.5cm
- Width: 2mm



Cat.No: F22002-10

- Straight/10.5cm
- Width: 0.8mm

Surgery Tools



ADSON Dressing Forceps

Cat.No:F12002-12

- Straight/12cm
- Tips width:0.6mm



Cat.No:F12003-12

- Straight/12cm
- Tips width:1.5mm



Cat.No:F13029-10

- Straight/10.5cm
- 1X2 teeth
- Tips width:1.3mm



Cat.No:F13030-10

- Curved/10.5cm
- 1X2 teeth
- Tips width:1.3mm



Cat.No:F12012-10

- Straight/10cm
- Tips:0.4X0.2mm



Cat.No:F12011-13

- Curved/13cm
- Width:1.2mm



Cat.No:F12019-10

- Straight/10.5cm
- Tips width:2mm



Cat.No:F18017-09

- Ring/9cm
- ID:2.2mm
- OD:3.2mm



Cat.No:F12005-10

- Straight/10cm
- Tips width:1mm



Cat.No:F12006-10

- Curved/10cm
- Tips width:1mm



Cat.No:F12007-10

- Curved/10cm
- Tips width:0.9mm



Cat.No:F14012-10

- Curved/10cm
- Tips width:0.5mm



Cat.No:F12013-10

- 45° Curved/10cm
- Tips :0.5x0.2mm



MCPHERSON Forceps

Cat.No:F18011-09

- Straight/9cm
- Tips :0.4X0.9mm
- 5mm Platform



SEMKEN 1X2 Teeth Tissue Forceps

Cat.No:F13014-12

- Straight/13cm
- Width:1mm



Dissecting Forceps (Standard)

Cat.No:F12019-10

- Straight/10cm
- Width:2mm



Cat.No:F12010-13

- Straight/13cm
- Width:1.3mm



Cat.No:F12029-09

- Straight/9.5cm
- Width:0.8mm



Cat.No:F12011-10

- Curved/10.5cm
- Width:1.9mm



Dressing Forceps

Cat.No:F15007-15

- Curved/15cm
- Width:1.2mm



1X2 Teeth Tissue Forceps (Standard)

Cat.No:F13023-14

- Straight/14cm
- Width:1.8mm



Cat.No:F12010-10

- Straight/10.5cm
- Width:1.8mm

Titanium Tools



Micro Forceps

Cat.No:F11029-11

- Straight/11cm
- Tips:0.14X0.09mm



Micro Forceps

Cat.No:F11030-11

- 45° Angled/11cm
- Tips:0.1X0.06mm



Micro Forceps

Cat.No:F11031-11

- Curved/11cm
- Tips:0.07X0.03mm



Micro Forceps

Cat.No:F11027-13

- Straight/13cm
- Tips:0.1X0.06mm
- Price:\$90.00



Cat.No:F11028-13

- Curved/13cm
- Tips:0.1X0.06mm



Micro Forceps

Cat.No:F11001-11

- Straight/11cm
- Tips:0.2X0.12mm



Cat.No:F11002-11

- Straight/11cm
- Tips:0.15X0.1mm



Cat.No:F11020-11

- Straight/11cm
- Tips:0.05X0.01mm



Micro Forceps

Cat.No:F11003-11

- 45° Angled/11cm
- Tips:0.3X0.15mm
- Price:\$29.00



Cat.No:F11003-13

- 45° Angled/13cm
- Tips:0.15X0.1mm



Cat.No:F11021-11

- 45° Angled/11cm
- Tips:0.1X0.06mm



Micro Forceps

Cat.No:F11022-11

- Curved/11.5cm
- Tips:0.1X0.06mm
- Price:\$42.00



Cat.No:F13004-11

- Curved/11.5cm
- Tips:0.3X0.15mm



Cat.No:F11004-11

- Curved/11cm
- Tips:0.2X0.12mm

RWD

| Surgery Tools
SURGERY TOOLS



Retractors

Cat.No:R22005-45
● 30mm Spread/5cm



Retractors

Cat.No:R22011-50
● 30mm Spread/5.5cm



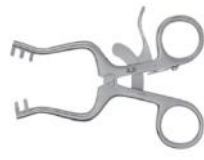
Retractors

Cat.No:R22009-01
● 65mm Spread/7.5cm



Retractors

Cat.No:R22029-04
● 15mm Spread/4cm



Retractors

Cat.No:R22013-10
● 10mm Spread

Titanium Tools

Titanium Tools



Tying Forceps

Cat.No:FC11001R-11
● Straight(SS)/11cm
● Tips: 0.3X0.5mm



Tying Forceps

Cat.No:FC11002R-08
● Straight(SS)/8.5cm
● Tips: 0.3X0.5mm



Tying Forceps

Cat.No:FC11001T-11
● Straight(TA)/11cm
● Tips: 0.3X0.5mm



Tying Forceps

Cat.No:FC11002T-08
● Straight(TA)/8.5cm
● Tips: 0.3X0.5mm



Ear Punch

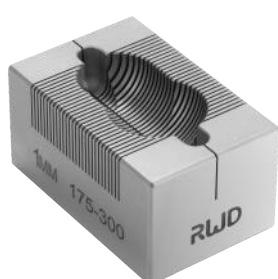
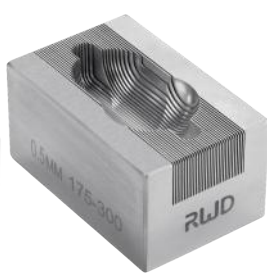
Cat.No:C22001-10
● Straight/10.5cm
● Punch Dia:1mm



Cat.No:C22002-10
● Straight/10.5cm
● Punch Dia:2mm

RWD Sectioning Matrix
SECTIONING MATRIX
Mouse Brain Sectioning Matrix

- 68707 Brain Matrix, Mouse 40-75g, Coronal, 1mm, Stainless steel
68708 Brain Matrix, Mouse 40-75g, Sagittal, 1mm, Stainless steel
68713 Brain Matrix, Mouse, 40-75g, Coronal,0.5mm, Stainless steel
68714 Brain Matrix, Mouse, 40-75g, Sagittal, 0.5mm,Stainless steel



Heart Sectioning Matrix

- 68719 Heart Matrix, Mouse 20-75g, Coronal, 1mm, Stainless steel
68720 Heart Matrix, Rat 175-400g, Coronal, 1mm, Stainless steel
68721 Heart Matrix, Mouse 20-75g, Coronal, 0.5mm, Stainless steel
68722 Heart Matrix, Rat 175-400g, Coronal, 0.5mm, Stainless steel

Rat Brain Sectioning Matrix, Coronal

- 68709 Brain Matrix, Rat, 175-300g, Coronal, 1mm, Stainless steel
68711 Brain Matrix, Rat, 300-600g, Coronal, 1mm, Stainless steel
68715 Brain Matrix, Rat, 175-300g, Coronal, 0.5mm, Stainless steel
68717 Brain Matrix, Rat, 300-600g, Coronal, 0.5mm, Stainless steel

Rat Brain Sectioning Matrix, Sagittal

- 68710 Brain Matrix, Rat, 175-300g, Sagittal, 1mm, Stainless steel
68712 Brain Matrix, Rat, 300-600g, Sagittal, 1mm, Stainless steel
68716 Brain Matrix, Rat, 175-300g, Sagittal, 0.5mm, Stainless steel
68718 Brain Matrix, Rat, 300-600g, Sagittal, 0.5mm, Stainless steel



Ear Tag applicator

Cat.No:C23001-14
● Straight/14.5cm
● Punch Dia:2.55mm
● Width:3mm



Ear Tag

Cat.No:23001-5
● Black number A1-A500



RWD | Sectioning Blades
SECTIONING BLADES

Sectioning Blades

PB-2 Microtome and Cryostat Blades, 50PCS.



Micro Clamps

Cat.No:R34001-14
● Straight/14cm
● Cutting Edge (Length):8.4mm
● Wtdth:5mm



Rongeurs

Cat.No:S21022-14
● Curved/14cm
● Cutting Edge(Length):0.5mm



Rongeurs

Cat.No:S22004-11
● Flat Blades/11cm
● Cutting Edge(Length):15mm
● Width:6.8mm



Rongeurs

Cat.No:S21002-15
● Curved/15cm
● Cutting Edge(Length):12.5mm
● Width:3.5mm



Rongeurs

Cat.No:S21010-15
● Curved/15cm
● Cutting Edge(Length):19mm
● Width:2mm



Rongeurs

Cat.No:S21023-14
● Curved/14cm
● Cutting Edge(Length):0.7mm
● Width:7mm



Rongeurs

Cat.No:S21024-14
● Curved/14cm
● Cutting Edge(Length):1mm
● Width:6.5mm



BEEBE Bone Cutters

Cat.No:S16001-10
● Straight/10.5cm
● Cutting Edge(Length):21mm
● Width:10mm



BEEBE Bone Cutters

Cat.No:S22005-12
● Flat Blades/12.5cm
● Cutting Edge(Length):15.2mm
● Width:7.4mm



Rongeurs

Cat.No:S21019-14
● Straight/14.5cm
● Cutting Edge(Length):0.5mm
● Width:7.5mm





“

The osmotic pumps are convenient for chronic treatment and therefore reduce the stress burden of the animal compared to frequent repetitive treatment. They are easy to use, effective and I like that they are generally shipped quickly after ordering.



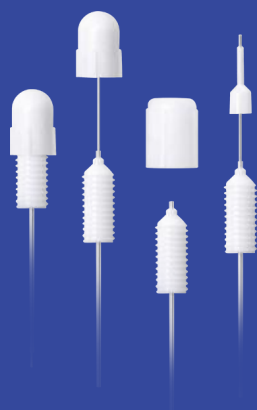
**Universiteit
Antwerpen**

“

We have been using RWD the anesthetics Recycling Cans For a long time . The are reasonably priced and does a good job on absorbing isoflurane after surgery



**VANDERBILT
UNIVERSITY**



“

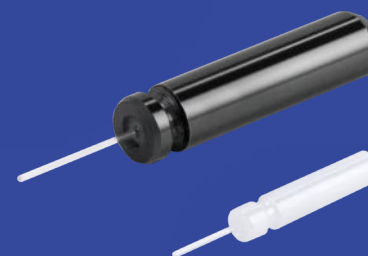
We used to use the plastic one drug infusion cannula before they stopped making them. Through introduction I learned about the RWD brand. They can a complete range of options and does a good job on their customization. The order usually talk around a week even for large quantities. Would buy again.



**PRINCETON
UNIVERSITY**

“

I got to test the samples you sent. They are very impressive. The auto fluorescence is comparable to the Thorlabs low auto-fluorescence fibers. The transmission efficiency is all >80%.Great!



“

I was skeptical at first, but the RWD Magnetic Cell Separation Kit Yielded Exceptional results. The T cells yielded from the mice Spleen using RWD mice CD4+ MAC kits have high viability and the kit is reasonably priced. I hope they release the single step separation product soon!

UTSouthwestern
Medical Center

“

I used the surgical tools ordered from your company a couple of months ago and they are very good. I would like to order more.



**JOHNS HOPKINS
UNIVERSITY**




RWD Life Science Co.,Ltd

Add: 9/F, 19/F, 20/F, Building 7A, 9/F Building D, Shenzhen International Innovation Valley, XiLi Street, Dashi 1st Road, Nanshan District, Shenzhen, Guangdong, China. E-mail: rwd@rwdstco.com

RWD Life Science Inc.

Add: 10410 Corporate Drive, Sugar Land, TX 77478, USA
Tel: (858)900-5879 Support: service@rwdls.com
Web: www.rwdstco.com


RWD Life Science



1000
Hospitals



2500+
Research Institutes



6000+
Universities




14500



22+
Years





R&D Input:
15%+Revenue






100+
Countries and
Regions





40000+
Customers





10+
New Products / Year



87

invention patents
applications

28

design patents
applications

34

utility model patents
applications

34

software
copyright

RWD Life Science Co.,Ltd

Add: 9/F, 19/F, 20/F, Building 7A, 9/F Building D, Shenzhen International Innovation Valley, XiLi Street, Dashi 1st Road, Nanshan District, Shenzhen, Guangdong, China. **E-mail:** rwd@rwdstco.com

RWD Life Science Inc.

Add: 10410 Corporate Drive, Sugar Land, TX 77478, USA
Tel: (858)900-5879 **Support:** service@rwdls.com
Web: www.rwdstco.com