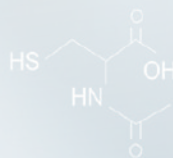


Research models and associated services

CATALOG
2025

Price valid from 01/01/2025





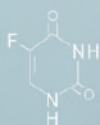
CONTACT

JANVIER LABS
Research models and associated services

Route des Chênes Secs
53941 Le Genest Saint Isle
FRANCE

T. +33 (0)2 43 02 11 91

Sales support: contact@janvier-labs.com
Scientific support: scientificsupport@janvier-labs.com



JANVIER LABS takes care of your models so you can devote yourself fully to your research projects!

Thanks to its unique site, the largest and most modern in Europe, JANVIER LABS provides you with experimental models of the highest level of quality.

We assure you of rigorous breeding conditions essential for uniformity and reproducibility of your experimental results: health status (SPF and SOPF), genetic stability, microbiota and animal welfare.

With 65 years dedicated to breeding and developing research models, JANVIER LABS ensures availability, responsiveness, and excellence, as well as transparency on the quality of its models, products and services.

Discover our new strains, including B6 CD45.1, NXG hIL-15, B6 hPD-1, and NRG cKit, among a wide range of dietary, immunodeficient, humanized, or genetically modified models designed to express human ICPS.

With JANVIER LABS, you benefit from a complete support which extends from the creation of your new models, their characterization by our experts and the breeding of preclinical cohorts, the preparation of your models in the laboratory, until their delivery by our dedicated carriers.

We are also proud to now support your research projects even further within Janvier Group Biosciences, with our own experts in Drug Discovery, Preclinical Research and Bioproduction. Find out more about our expertise at janvier-group.com.

Thomas Janvier
General Director



PULSE 82 SBD 125 DBP 80

INDEX

- 6 • The largest and most advanced rodent breeding site in Europe
- 7 • A rigorous health policy, a constant concern for animal welfare, a unique and stable microbiota, a genetic management concept
- 8 • Research models
 - Weight of the animals during preparation and during transport
 - Strain characteristics
 - Health status
 - Transport of pregnant females and unweaned litters

11. MICE RESEARCH MODELS



STANDARD

INBRED MICE

- 12 • 129/Sv
- 12 • BALB/cByJ
- 12 • BALB/cAnN
- 13 • BALB/cJ
- 13 • C3H
- 13 • C57BL/6J
- 14 • C57BL/6N
- 14 • CBA
- 14 • DBA/1
- 14 • DBA/2
- 15 • FVB
- 15 • SJL
- 15 • ❄️ NOD

OUTBRED MICE

- 16 • SWISS
- 16 • NMRI

HYBRID MICE

- 16 • B6D2F1
- 17 • B6CBAF1
- 17 • B6SJLF1
- 17 • CSJLF1
- 17 • C3D2F1
- 17 • B6CF1
- 17 • B6C3F1
- 17 • B6129SF1

MUTANT MICE

- 18 • B6N CD45.1
- 18 • B6N Albinos
- 18 • ❄️ B6J CD45.1
- 18 • ❄️ FVB Hairless
- 18 • ❄️ B6 Agouti
- 18 • ❄️ B6N Hairless
- 19 • ❄️ B6 Fcgr1-EGFP-hDTR
- 19 • ❄️ B6 Lang-eGFP
- 19 • ❄️ B6 Lang-EGFP-hDTR
- 19 • ❄️ B6 Xcr1-Cre-mTFP1
- 19 • ❄️ B6 FceRI β -tdTomato-hDTR
- 19 • ❄️ Genista
- 19 • ❄️ B6 Foxp3-EGFP
- 19 • ❄️ B6 CD3E KO
- 19 • ❄️ B6 Lat Fl-dtr
- 19 • ❄️ B6 Tcrd-H2BEGFP
- 19 • ❄️ B6 cKit
- 19 • ❄️ B6 B2M

PATHOLOGICAL

- 20 • BKS Diabetic
- 20 • BKS Diabetic mouse Control
- 20 • B6 Obese
- 20 • B6 Obese mouse Control
- 21 • B6 DIO
- 21 • B6 DIO MASH
- 21 • C57BL/6J Aged
- 21 • ❄️ BIOZZI Asthmatic

IMMUNODEFICIENT

Ranked in ascending order of severity

- 22 • Athymic Nude
- 22 • NMRI Nude
- 22 • BALB/c Nude
- 22 • ❄️ B6 Nude
- 22 • ❄️ B6G

MICE

RESEARCH MODELS



IMMUNODEFICIENT

- 23 . B6R
- 23 . ❄ NOD G
- 23 . CB17-Scid
- 23 . NOD-Scid
- 24 . ❄ B6R Nude
- 24 . ❄ CB17-Scid Nude
- 24 . ❄ B6RG
- 24 . B6RGS
- 24 . NRG
- 24 . NRG cKit
- 25 . NXG
- 25 . NXG B2M
- 25 . NXG hIL-15
- 25 . NXG EXL
- 25 . NXG hIL-2
- 25 . NXG hIL6/hIL6R
- 25 . NXG HLA-A*02:01
- 25 . BRGS A2DR2
- 25 . ❄ BRGS TSLP
- 26 . ❄ BRGS UPA
- 26 . ❄ B6RGS Albinos
- 26 . ❄ B6RGS Nude
- 26 . ❄ B6RGS cKit
- 26 . ❄ NRG Nude

HUMANIZED

GENETICALLY

IMMUNE CHECKPOINT PATHWAY

- 27 . B6 hPD-1
- 27 . B6 hPD-L1
- 27 . B6 hCTLA-4
- 27 . B6 hPD-1/hPD-L1
- 27 . B6 hPD-1/hCTLA-4
- 27 . B6 hPD-L1/hCTLA-4
- 27 . B6 hPD-L1/hLAG3
- 27 . B6 hCD28
- 27 . B6 hICOS
- 27 . B6 hOX40
- 27 . B6 hOX40/hOX40L
- 27 . B6 hCD40
- 27 . B6 h4-1BB
- 27 . B6 hTIGIT
- 27 . B6 hVISTA
- 27 . B6 hLAG3
- 27 . B6 hTIM3

HUMANIZED

CELL SURFACE PROTEINS

- 28 . B6 hCD19
- 28 . B6 hCD22
- 28 . B6 hCD147
- 28 . B6 hMARCO
- 28 . B6 hCD4
- 28 . B6 hAPOE3
- 28 . B6 hAPOE4
- 28 . B6 hTLR8
- 28 . B6 hLILRB4
- 28 . B6 hHLA-A2*01
- 28 . B6 hHLA-A11
- 28 . B6 hCCR8

ANTIBODY DISCOVERY

- 28 . B6 hFCRN
- 28 . B6 hCD3EDG
- 28 . B6 hCD3E/hCD28

OTHER MODELS OF INTEREST

- 28 . B6 hVEGFA
- 28 . B6 hPCSK9
- 28 . B6 hTNFSF14
- 28 . B6 hMASP2
- 28 . B6 hMAPT
- 28 . B6 hSTING
- 28 . B6 hDPP4

HUMANIZED IMMUNE SYSTEM

- 29 . NRG HSPC
- 29 . NXG HSPC
- 29 . NRG cKit HSPC
- 29 . BRGS A2DR2 HSPC
- 29 . BRGS TSLP HSPC
- 29 . NXG EXL HSPC
- 29 . NXG hIL-15 HSPC
- 29 . NXG hIL-2 HSPC
- 29 . NXG hIL6/hIL6R HSPC
- 29 . NXG HLA-A*02:01 HSPC
- 29 . NXG PBMC
- 29 . NXG B2M PBMC

30. RATS

RESEARCH MODEL



STANDARD

INBRED RATS

- 31 · DARK AGOUTI
- 31 · LEWIS
- 31 · FISCHER
- 31 · ❄️ WISTAR KYOTO
- 31 · ❄️ BROWN NORWAY
- 31 · ❄️ BLACK HOODED

OUTBRED RATS

- 32 · WISTAR
- 32 · SPRAGUE DAWLEY
- 32 · LONG EVANS
- 33 · ❄️ FAWN HOODED
- 33 · Old WISTAR

NATURAL MUTANT

- 34 · ❄️ SPRAGUE DAWLEY Hairless

IMMUNODEFICIENT

- 34 · ❄️ FISCHER Nude
- 34 · ❄️ LOU Nude
- 34 · ❄️ ATHYMIC Nude
- 34 · ❄️ SDS
- 34 · ❄️ SDG
- 34 · ❄️ SDR
- 34 · SDRGS

❄️ Cryopreserved models, price on request

35. OTHER RODENTS

OUTBRED

- 35 · Goldhamster
- 35 · Gerbil



36. ASSOCIATED SERVICES



BREED AND SECURE YOUR MODEL

- 37 · Cryopreservation
- 38 · Assisted reproduction
- 40 · Jax Sperm Cryo Kit

CUSTOMISE YOUR MODEL

- 41 · Embryo kit
- 41 · Customised models
- 42 · Contract breeding

PREPARE YOUR MODEL

- 43 · Biological products
- 44 · Surgery
- 44 · Experimental protocols

DELIVER / REPATRIATE YOUR MODEL

- 45 · An in-house transport service
- 46 · Weekly deliveries
- 46 · Packaging adapted to animal's health status
- 46 · Stress management for animal transportation

PASSION FOR BREEDING AND COMMITMENT TO RESEARCH FOR MORE THAN 60 YEARS

FOUNDED IN 1960 BY ROGER JANVIER, THE COMPANY HAS BECOME INTERNATIONAL AND REMAINS LOYAL TO THE VALUES OF ITS FOUNDER.

- ✂ Seeking excellence, going ever further for the quality of our rodents, products and services
- ✂ Ensuring customer satisfaction through flexibility, responsiveness and proximity of our teams
- ✂ Innovating by anticipating the needs of our customers
- ✂ Engaging with researchers to improve tomorrow's health

Up to now, more than 3,000 public and private laboratories trust us in more than 20 countries.

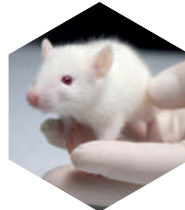


THE LARGEST AND MOST ADVANCED RODENT BREEDING SITE IN EUROPE



INNOVATION & CONTINUOUS IMPROVEMENT

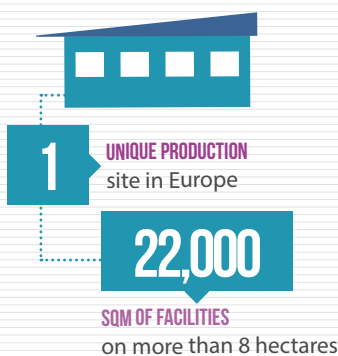
- > Millions of Euros reinvested each year in our production site
- > Ongoing development of new advanced technologies



CONTINUITY OF SUPPLY

We breed each strain in different production units in order to ensure their availability

KEY FIGURES



Breeding capacity

3,000,000

RODENTS A YEAR



45,000

KM A WEEK TRAVELLED by our integrated transport department

3,500

CUSTOMERS on the 5 continents



412

INTERNATIONAL employees



INTERNATIONAL PLAYER IN BIOMEDICAL RESEARCH

With the support of our teams of experts and our unique site in Europe, at the forefront of innovation and entirely dedicated to rodent breeding, we assure you of strict breeding conditions around 4 fundamental elements:



Highest standards for health quality



Animal welfare



Unique and stable microbiota



Genetic stability



HIGHEST STANDARDS FOR HEALTH QUALITY

Led by a team of experts, our strict health policy provides the human, organisational and technical means necessary to ensure the highest health standards (SPF and SOPF).

- Transparency of health monitoring tests
- Independent laboratories
- Frequency of health monitoring tests beyond FELASA recommendations



ANIMAL WELFARE

We ensure the highest welfare of our rodents. At JANVIER LABS, animal welfare is a commitment, a value that fuels our passion as breeders.

- All our teams are regularly trained and permanently aware of animal welfare.
- We assure calm, docile and easy-to-handle animals. Animals handled several times a week
- Control of environmental parameters
- No mixture of species, for a calm environment which allows the expression of natural behaviour
- A department dedicated to continuous improvement of animal welfare and to the application of the 3Rs
- An independent ethics committee



A UNIQUE AND STABLE MICROBIOTA

All our models have the same microbiota which is studied, monitored and stable over time.

- Standardised breeding procedures on a unique site
- Regular controls of the microbiota by experts
- Consistency and homogeneity of environmental factors

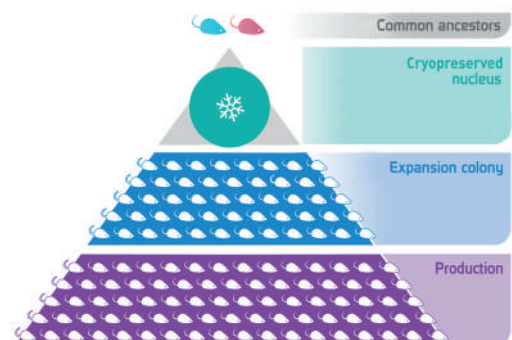
The genetics reliability of research models is one of the essential conditions for the success of research programmes

In order to provide researchers with research models with a high quality genetic, JANVIER LABS has developed a genetic management policy by putting in place essential rules for the genetics management of its models. This policy is based on modern breeding management tools such as: cryopreservation and embryo revitalization.

The JANVIER LABS GENETIC POLICY® allows us to ensure the genetic homogeneity of our strains delivered to the end user by performing rigorous genetic management at three levels (nucleus in cryopreserved embryo form, expansion colony and production colony). It protects our models from genetic drift.

The integration of modern techniques such as cryopreservation and revitalisation of embryos allows us to freeze our nucleus. Thus we slow down the evolution of the model, which increases by one generation every 25 to 50 years, instead of 2 generations per year.

JANVIER LABS can thus guarantee the genetic stability of all its models over time.



OUR RESEARCH MODELS

15 of the top 20 pharmaceutical and biotech companies and leading international research institutes have chosen JANVIER LABS as a unique partner for their research projects.

Aware that our models are an asset for biomedical research, and to prepare for tomorrow's challenges, JANVIER LABS has created key partnerships with renowned experts (Ciphe, Centre d'Immunophénomique, France) to develop new innovative humanised and transgenic models using emerging technologies for genome editing (CRISPR/Cas9) and characterisation, notably by immunophenotyping. These approaches serve to continuously improve the predictive and translational value of rodent models.

Choosing JANVIER LABS as your partner can significantly expand, strengthen and accelerate your research and development programmes, by accessing experts who have successfully generated thousands of animals at an unprecedented success rate.

CONCERNING THE WEIGHT OF THE ANIMALS DURING PREPARATION AND DURING TRANSPORT:

Weight of animals for shipment:

Weight of animals sold at age

If you specify a minimum weight and a maximum weight:
- When the requested difference is less than 4 g for mice or 30 g for rats, hamsters or gerbils, the price will then be increased by 6%.

Transient weight loss during transport:

Not all individuals react in the same way during transport due to the nature of their sensitivity or dominance behaviours for access to food and gel. **These factors can impact the weight of the animals during transport.** Some individuals can lose up to 10% of their formula weight.

In general, these animals regain their initial weight within a few days of delivery, depending on their housing conditions and their hierarchical position in the group.

STRAIN CHARACTERISTICS:

Certain strains have physiological and behavioural characteristics which are specific to them and which must be taken into account when ordering models. The FAQ on our website helps you find out more about this: <https://www.janvier-labs.com/faq/>.

We are also on hand to provide you with all the information you will need to secure your order.

Pregnant females can be either model strains or surrogate mothers, such as B6CBA/F1 (mice) or SD (rats).

HEALTH STATUS:

JANVIER LABS is committed to providing standardized models of the highest genetic quality with SPF or SOPF status.

To find out the price of animals with SOPF health status, please contact us.

TRANSPORT OF PREGNANT FEMALES AND UNWEANED LITTERS:

In order to ensure the well-being of animals and comply with the legislation in force:

Pregnant females having reached more than 90% of their gestation time are prohibited for transport. In line with the relevant legislation, JANVIER LABS transport policy allows:

- Mice: pregnant females up to a maximum of 16 days gestation upon delivery
- Rats: pregnant females up to a maximum of 17 days of gestation upon delivery

The transport of pups under 8 days old is prohibited.

The exact day of parturition cannot be guaranteed due to the natural variation in the length of gestation. Furthermore, JANVIER LABS cannot guarantee the number of embryos / offspring per litter.

Pregnant females delivered are primiparous. All pregnant females ordered are billed. In order to guarantee the availability of pregnant females, we recommend that you anticipate your requests for scheduled matings.

An ex-breeder is an animal originating from uncoupled animals at the end of the cycle.

A reformed animal is an animal which is sold without age or weight criteria, subject to availability.

Gerontobiology: for the ageing of inbred or outbred old breeders, please contact us.

MICE

RESEARCH MODELS

All our technical sheets available on www.janvier-labs.com

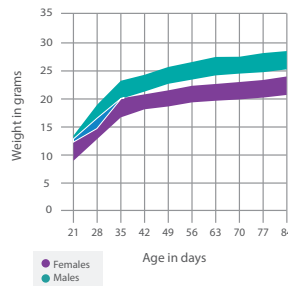


MICE MODELS STANDARD

INBRED

129/Sv 129S2/Rj #0001

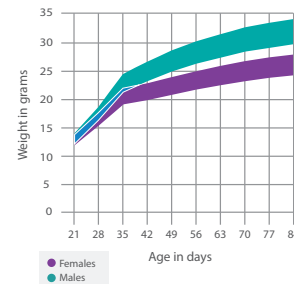
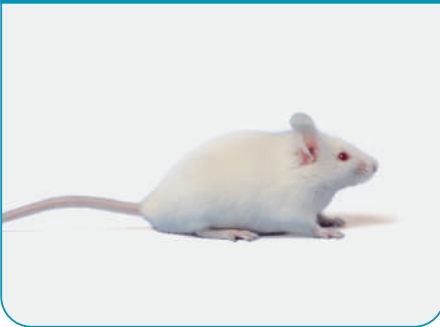
Price in €



Age in weeks	MALE	FEMALE
3	48,38 €	48,38 €
4	52,16 €	52,16 €
5	55,81 €	55,81 €
6	59,54 €	59,54 €
7	63,68 €	63,68 €
8	67,81 €	67,81 €
For each extra week <i>Up to 12 weeks</i>	3,86 €	3,86 €
Female with litter (5-6 pups)		243,71 €
Time-mated pregnant female		Contact us
Old breeders	48,38 €	48,38 €

BALB/cByJ BALB/cByJRj #0002

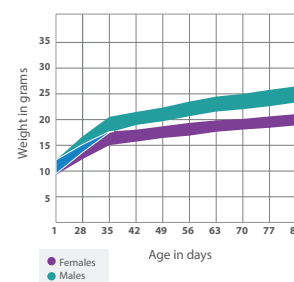
Price in €



Age in weeks	MALE	FEMALE
3	18,85 €	18,85 €
4	19,21 €	19,21 €
5	21,00 €	21,00 €
6	22,65 €	22,65 €
7	25,77 €	25,77 €
8	28,92 €	28,92 €
For each extra week <i>Up to 12 weeks</i>	3,45 €	3,45 €
Female with litter (5-6 pups)		282,08 €
Time-mated pregnant female, guaranteed at E15 on delivery date		169,59 €
Not-guaranteed time-mated pregnant female		102,48 €
Old breeders	16,02 €	16,02 €

BALB/cAnN BALB/cAnNRj #0003

Price in €



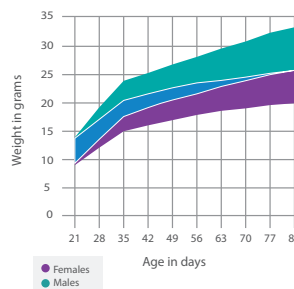
Age in weeks	MALE	FEMALE
3	16,75 €	16,75 €
4	17,59 €	17,59 €
5	18,85 €	18,85 €
6	20,95 €	20,95 €
7	22,37 €	22,37 €
8	24,26 €	24,26 €
For each extra week <i>Up to 12 weeks</i>	3,13 €	3,13 €
Female with litter (5-6 pups)		121,72 €
Time-mated pregnant female, guaranteed at E15 on delivery date		114,30 €
Not-guaranteed time-mated pregnant female		89,92 €
Old breeders	15,91 €	15,91 €

MICE MODELS STANDARD

INBRED

BALB/cJ BALB/cJRj #0004

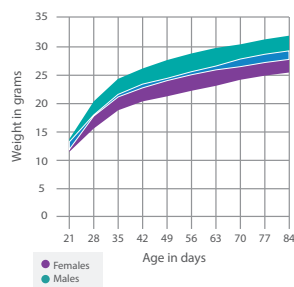
Price in €



Age in weeks	MALE	FEMALE
3	16,75 €	16,75 €
4	17,59 €	17,59 €
5	18,85 €	18,85 €
6	20,95 €	20,95 €
7	22,37 €	22,37 €
8	24,26 €	24,26 €
For each extra week <i>Up to 12 weeks</i>	3,13 €	3,13 €
Female with litter (5-6 pups)		121,72 €
Time-mated pregnant female, guaranteed at E15 on delivery date		114,30 €
Not-guaranteed time-mated pregnant female		89,92 €
Old breeders	15,91 €	15,91 €

C3H C3H/HeNRj #0005

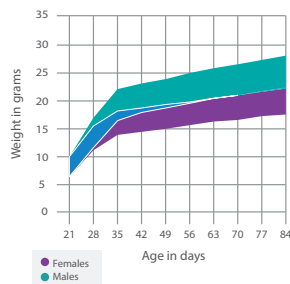
Price in €



Age in weeks	MALE	FEMALE
3	21,10 €	21,10 €
4	22,58 €	22,58 €
5	24,13 €	24,13 €
6	26,19 €	26,19 €
7	29,89 €	29,89 €
8	32,35 €	32,35 €
For each extra week <i>Up to 12 weeks</i>	3,13 €	3,13 €
Female with litter (5-6 pups)		148,29 €
Time-mated pregnant female, guaranteed at E15 on delivery date		134,18 €
Not-guaranteed time-mated pregnant female		110,86 €
Old breeders	21,10 €	21,10 €

C57BL/6J C57BL/6JRj #0006

Price in €

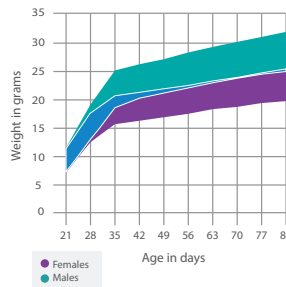


Age in weeks	MALE	FEMALE
3	18,94 €	18,94 €
4	20,35 €	20,35 €
5	22,51 €	22,51 €
6	24,39 €	24,39 €
7	26,51 €	26,51 €
8	29,70 €	29,70 €
9	33,26 €	33,26 €
10	36,82 €	36,82 €
11	40,37 €	40,37 €
For each extra week <i>Up to 15 weeks</i>	3,56 €	3,56 €
Female with litter (5-6 pups)		152,51 €
Time-mated pregnant female, guaranteed at E15 on delivery date		144,79 €
Not-guaranteed time-mated pregnant female		93,17 €
Old breeders	17,25 €	17,25 €

MICE MODELS STANDARD

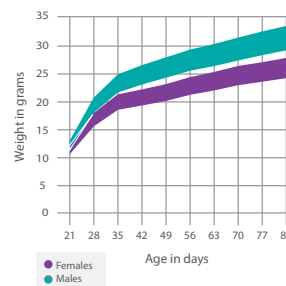
INBRED

C57BL/6N C57BL/6NRj #0007



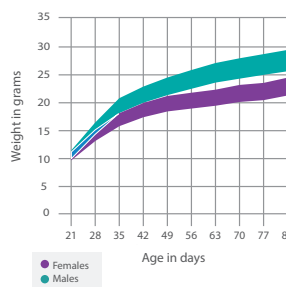
Age in weeks	Price in €	
	MALE	FEMALE
3	16,86 €	16,86 €
4	18,46 €	18,46 €
5	20,24 €	20,24 €
6	21,57 €	21,57 €
7	22,84 €	22,84 €
8	25,98 €	25,98 €
For each extra week <i>Up to 15 weeks</i>	3,41 €	3,41 €
Female with litter (5-6 pups)		151,41 €
Time-mated pregnant female, guaranteed at E15 on delivery date		133,98 €
Not-guaranteed time-mated pregnant female		85,21 €
Old breeders	16,86 €	16,86 €

CBA CBA/JRj #0008



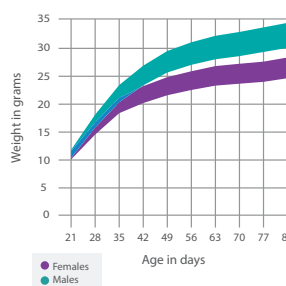
Age in weeks	Price in €	
	MALE	FEMALE
3	19,29 €	19,29 €
4	20,91 €	20,91 €
5	22,74 €	22,74 €
6	26,11 €	26,11 €
7	27,83 €	27,83 €
8	31,43 €	31,43 €
For each extra week <i>Up to 12 weeks</i>	3,45 €	3,45 €
Female with litter (5-6 pups)		159,14 €
Time-mated pregnant female		Contact us
Old breeders	19,29 €	19,29 €

DBA/1 DBA/1JRj #0009



Age in weeks	Price in €	
	MALE	FEMALE
3	29,51 €	29,51 €
4	33,92 €	33,92 €
5	38,35 €	38,35 €
6	42,33 €	42,33 €
7	46,89 €	46,89 €
8	51,48 €	51,48 €
For each extra week <i>Up to 12 weeks</i>	4,65 €	4,65 €
Female with litter (5-6 pups)		202,34 €
Time-mated pregnant female		Contact us
Old breeders	25,22 €	25,22 €

DBA/2 DBA/2JRj #0010



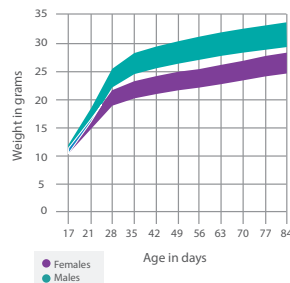
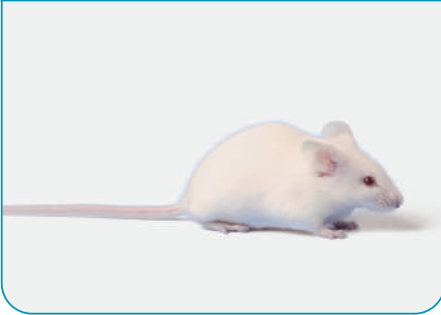
Age in weeks	Price in €	
	MALE	FEMALE
3	22,80 €	22,80 €
4	23,94 €	23,94 €
5	26,82 €	26,82 €
6	28,54 €	28,54 €
7	29,83 €	29,83 €
8	30,99 €	30,99 €
For each extra week <i>Up to 12 weeks</i>	3,13 €	3,13 €
Female with litter (5-6 pups)		147,45 €
Time-mated pregnant female		Contact us
Old breeders	19,94 €	19,94 €

MICE MODELS STANDARD

 Cryopreserved models, price on request

FVB FVB/NRj #0011

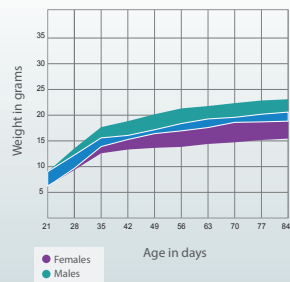
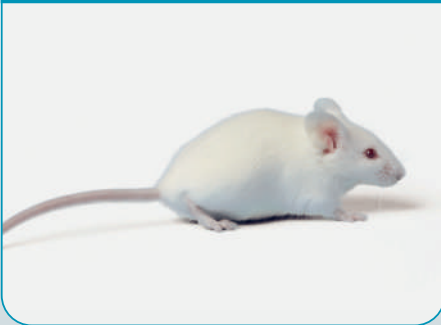
Price in €



Age in weeks	MALE	FEMALE
3	17,44 €	17,44 €
4	18,73 €	18,73 €
5	21,86 €	21,86 €
6	24,47 €	24,47 €
7	26,99 €	26,99 €
8	32,26 €	32,26 €
For each extra week <i>Up to 12 weeks</i>	3,43 €	3,43 €
Female with litter (5-6 pups)		125,26 €
Time-mated pregnant female, guaranteed at E15 on delivery date		121,15 €
Not-guaranted time-mated pregnant female		96,97 €
Old breeders	17,44 €	17,44 €

SJL SJL/JRj #0012

Price in €



Age in weeks	MALE	FEMALE
3	Contact us	30,17 €
4		31,72 €
5		35,25 €
6		39,00 €
7		42,51 €
8		46,20 €
For each extra week <i>Up to 12 weeks</i>		3,69 €
Female with litter (5-6 pups)		191,20 €
Time-mated pregnant female	Contact us	
Old breeders	30,17 €	

NOD NOD/Rj

#0013 



MICE MODELS STANDARD

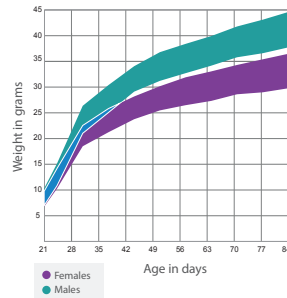
OUTBRED

SWISS Rj:SWISS (CD-1*) #0101

Price in €



CD-1* is a registered trademark of Charles River. All rights reserved.



Weight in grams*	MALE	FEMALE
10-12	6,07 €	6,07 €
12-14	6,29 €	6,29 €
14-16	6,51 €	6,51 €
16-18	7,32 €	7,32 €
18-20	7,54 €	7,54 €
20-22	7,79 €	7,79 €
22-24	8,02 €	8,02 €
24-26	9,09 €	9,09 €
26-28	9,34 €	9,34 €
28-30	9,78 €	9,78 €
30-32	10,72 €	10,72 €
32-34	11,66 €	11,66 €
34 et +	Contact us	Contact us
Female with litter (10-12 pups)		87,54 €
Time-mated pregnant female, guaranteed at E15 on delivery date		59,56 €
Not-guaranted time-mated pregnant female		52,33 €
Old breeders	4,53 €	4,52 €

*weight during packaging

NMRI Rj:NMRI #0102

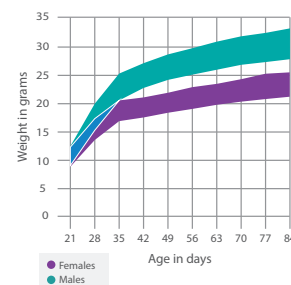


Price on request

HYBRID

B6 D2F1 B6D2F1/JRj (♀ C57BL/6JRj x ♂ DBA/2/JRj) #0201

Price in €



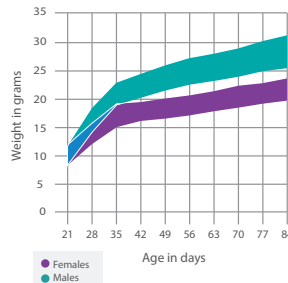
Age in weeks	MALE	FEMALE
3	18,54 €	18,54 €
4	19,67 €	19,67 €
5	20,97 €	20,97 €
6	22,17 €	22,17 €
7	23,15 €	23,15 €
8	24,35 €	24,35 €
For each extra week Up to 12 weeks	2,06 €	2,06 €
Female with litter (5-6 pups)		108,65 €
Old breeders	18,54 €	18,54 €

MICE MODELS STANDARD

HYBRID

B6 CBAF1 B6CBAF1/JRj (♀ C57BL/6JRj x ♂ CBA/JRj) #0202

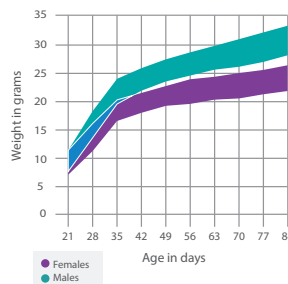
Price in €



Age in weeks	MALE	FEMALE
3	22,67 €	22,67 €
4	22,90 €	22,90 €
5	25,06 €	25,06 €
6	29,35 €	29,35 €
7	33,01 €	33,01 €
8	36,67 €	36,67 €
For each extra week Up to 12 weeks		3,66 €
Female with litter (5-6 pups)		120,23 €
Old breeders	22,67 €	22,67 €

B6 SJLF1 B6SJLF1/JRj (♀ C57BL/6JRj x ♂ SJL/JRj) #0203

Price in €



Age in weeks	MALE	FEMALE
3	Contact us	31,72 €
4		33,70 €
5		35,68 €
6		37,74 €
7		39,79 €
8		41,83 €
For each extra week Up to 12 weeks		5,38 €
Old breeders		24,84 €

CSJLF1 CSJLF1/Rj #0204
(♀ BALB/cJRj x ♂ SJL/JRj)



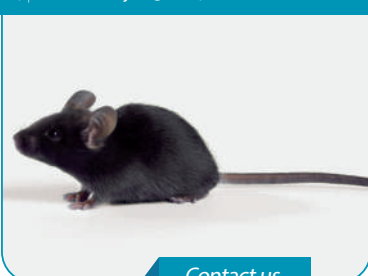
C3D2F1 C3D2F1/Rj #0205
(♀ C3H/HeNRj x ♂ DBA/2JRj)



B6CF1 B6CF1/Rj #0206
(♀ C57BL/6JRj x ♂ BALB/cJRj)

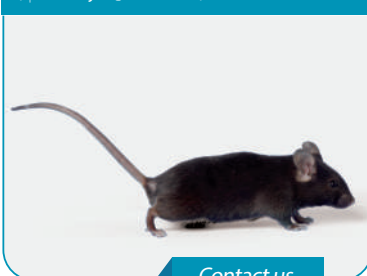


B6C3F1 B6C3F1/Rj #0207
(♀ C57BL/6JRj x ♂ C3H)



Contact us

B6129SF1 B6129SF1/JRj #0208
(♀ BL6JRj x ♂ 129SVRJ)



Contact us

We can help with
the design of your
hybrid model
Contact us for more
details

MICE MODELS STANDARD

MUTANT

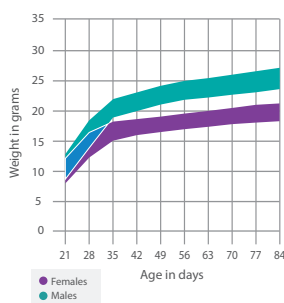
 Cryopreserved models, price on request

B6N CD45.1 #0301
C57BL/6N.Cg-Ptprc^a-Pepc^b/Rj



Contact us

B6 Albinos B6/Rj-Tyr^{c/c} #0302



Price in €

Age in weeks	MALE	FEMALE
3	32,94 €	32,94 €
4	34,42 €	34,42 €
5	35,90 €	35,90 €
6	37,46 €	37,46 €
7	40,50 €	40,50 €
8	43,57 €	43,57 €
For each extra week <i>Up to 12 weeks</i>	3,06 €	3,06 €
Female with litter (5-6 pups)		184,16 €
Time-mated pregnant female, guaranteed at E15 on delivery date		167,42 €
Not-guaranted time-mated pregnant female		111,61 €
Old breeders	32,94 €	32,94 €

B6J CD45.1 #0303 
B6.Cg-Ptprc^a-Pepc^b/Rj



FVB Hairless #0304 
FVB/N-hrth/Rj



B6 Agouti #0305 
C57BL/6N-A/A/Rj



B6N Hairless #0306 
C57BL/6N-hrth/Rj















For the current rates, please contact us.

MICE MODELS STANDARD

MUTANT

 Cryopreserved models, price on request

B6 Fcgr1-EGFP-hDTR	B6- <i>Fcgr1</i> ^{tm1(Fcgr1-IRES-EGFP-hDTR)} /CipheRj	#0307	
B6 Lang-eGFP	B6.Cg- <i>Cd207</i> ^{tm2(Cd207-IRES-EGFP)} /CipheRj	#0308	
B6 Lang-EGFP-hDTR	B6.Cg- <i>Cd207</i> ^{tm3(Cd207-IRES-EGFP-hDTR)} /CipheRj	#0309	
B6 Xcr1-Cre-mTFP1	B6- <i>Xcr1</i> ^{tm2(Xcr1-Cre-mTFP1)} /CipheRj	#0310	
B6 FcεRI β-tdTomato-hDTR	B6- <i>Ms4a2</i> ^{tm1(Ms4a2-IRES-tdTomato-2A-hDTR)} /CipheRj	#0311	
Genista	B6- <i>Gfi1</i> ^{Gen-tm1} /CipheRj	#0312	
B6 Foxp3-EGFP	B6- <i>Foxp3</i> ^{tm1(Foxp3-IRES-EGFP)} /CipheRj	#0313	
B6 CD3E KO	B6- <i>CD3</i> ^{tm1} /CipheRj	#0314	
B6 Lat Fl-dtr	B6.Cg- <i>Lat</i> ^{tm6.1(HBEGF/EGFP)} /CipheRj	#0315	
B6 Tcrd-H2BEGFP	B6- <i>Tcrd</i> ^{tm1(Tcrd-IRES-H2BEGFP)} /CipheRj	#0316	
B6 cKit	C57BL/6N- <i>Kit</i> ^{em1} /Rj	#0317	
B6 B2M	C57BL/6N- <i>B2m</i> ^{em1} /Rj	#0318	

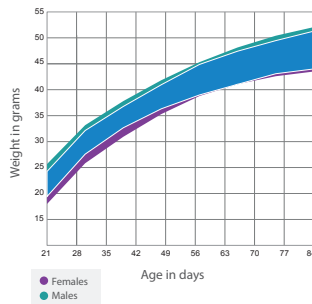
For the current rates, please contact us.



MICE MODELS PATHOLOGICAL

BKS Diabetic mouse (db/db) BKS-Lepr^{db}/Rj #1001

Price in €



Age in weeks	MALE
5	187,64 €
6	193,76 €
7	199,48 €
8	205,51 €
For each extra week Up to 12 weeks	10,59 €
Females	On request

BKS Diabetic mouse Control BKS-Lepr^{db/+}/Rj #1002

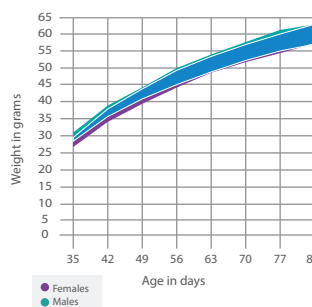
Price in €



Age in weeks	MALE
5	92,22 €
6	97,56 €
7	103,01 €
8	108,65 €
For each extra week Up to 12 weeks	6,72 €

B6 Obese mouse (ob/ob) B6.V-Lep^{ob}/JRj #1003

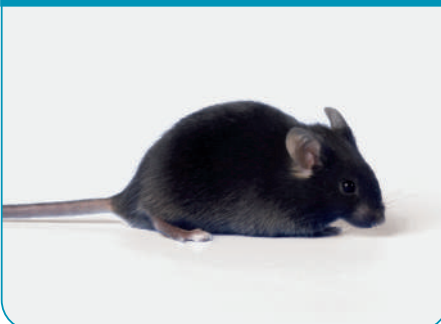
Preis in €



Age in weeks	MALE
4	201,95 €
5	212,54 €
6	216,92 €
7	222,52 €
8	229,31 €
For each extra week Up to 12 weeks	10,59 €

B6 Obese mouse Control B6.V-Lep^{ob/+}/JRj #1004

Preis in €



Age in weeks	MALE
4	107,93 €
5	114,33 €
6	119,16 €
7	124,27 €
8	129,36 €
For each extra week Up to 12 weeks	6,40 €

MICE MODELS PATHOLOGICAL

 Cryopreserved models, price on request

B6 DIO C57BL6/JRj #1005



[Contact us](#)

B6 DIO MASH C57BL6/JRj #1006



[Contact us](#)

C57BL/6JRj aged mouse #1007



In stock

Age in months	Price in €		Age in months	Price in €		Age in months	Price in €	
	MALE	FEMALE		MALE	FEMALE		MALE	FEMALE
4	67,14 €	80,58 €	11	154,02 €	184,83 €	18	245,96 €	Contact us
5	82,78 €	99,33 €	12	165,53 €	198,63 €	19	Contact us	
6	98,05 €	117,65 €	13	179,14 €	214,98 €	20		
7	108,01 €	129,61 €	14	192,51 €	231,02 €	21		
8	119,51 €	143,42 €	15	205,87 €	247,05 €	22		
9	131,02 €	157,23 €	16	219,24 €	Contact us	23		
10	142,52 €	171,03 €	17	232,61 €	Contact us	24		

For females older than 15 months and males older than 18 months, contact us.

Upon reservation at birth

Age in months	Price in €		Age in months	Price in €		Age in months	Price in €	
	MALE	FEMALE		MALE	FEMALE		MALE	FEMALE
4	60,23 €	72,26 €	11	101,98 €	122,37 €	18	169,63 €	Contact us
5	69,12 €	82,95 €	12	106,12 €	127,34 €	19	Contact us	
6	74,06 €	88,87 €	13	113,05 €	135,67 €	20		
7	82,62 €	99,14 €	14	119,80 €	143,76 €	21		
8	89,10 €	106,90 €	15	138,63 €	166,36 €	22		
9	91,04 €	109,24 €	16	153,31 €	Contact us	23		
10	93,60 €	112,32 €	17	161,53 €	Contact us	24		

For females older than 15 months and males older than 18 months, contact us.

In stock

Depending on the characteristics of your request (nature, age and number of animals), we will tell you how long it will take to receive your animals and the "in stock" price will be applied.

Upon reservation at birth

If you wish to anticipate your order and benefit from a preferential "reservation" price, our 3-month-old animals will be raised to the desired age to meet your needs.

JANVIER LABS aged C57BL/6JRj male and female mice are animals selected at weaning and are only dedicated for ageing. The animals are kept for ageing in their original production units and are bred until the age of up to 24 months in a controlled environment and health status.

Note: Our C57BL/6JRj mice have never been used as breeders.

BIOZZI Asthmatic BP/2lcRj #1008 



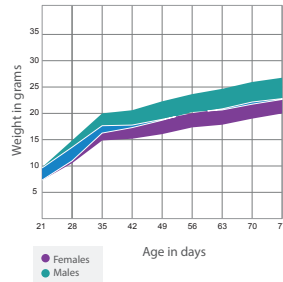
[Contact us](#)

MICE MODELS IMMUNODEFICIENT

 Cryopreserved models, price on request

ATHYMIC Nude Rj:ATHYM-Foxn1^{nu/nu} #2001

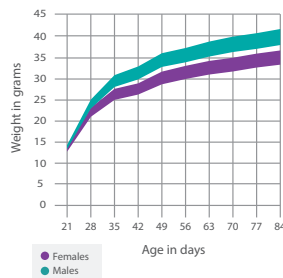
Price in €



Age in weeks	MALE	FEMALE
3	53,21 €	53,21 €
4	53,21 €	53,21 €
5	59,35 €	59,35 €
6	63,46 €	63,46 €
7	67,56 €	67,56 €
For each extra week, only for females Up to 12 weeks		6,45 €

NMRI Nude Rj:NMRI-Foxn1^{nu/nu} #2002

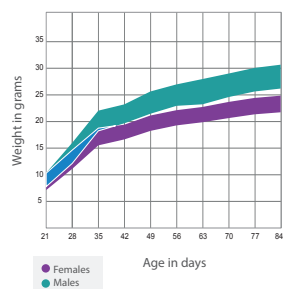
Price in €



Age in weeks	MALE	FEMALE
3	69,63 €	69,63 €
4	69,63 €	69,63 €
5	78,60 €	78,60 €
6	86,37 €	86,37 €
7	94,12 €	94,12 €
For each extra week, only for females Up to 12 weeks		5,26 €

BALB/c Nude BALB/cAnN-Foxn1^{nu/nu}/Rj #2003

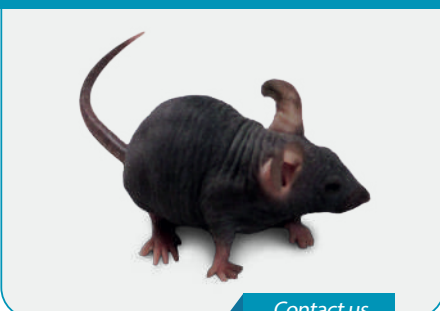
Price in €



Age in weeks	MALE	FEMALE
3	121,27 €	121,27 €
4	121,27 €	121,27 €
5	125,55 €	125,55 €
6	132,50 €	132,50 €
7	137,82 €	137,82 €
For each extra week, only for females Up to 12 weeks		6,14 €

B6 Nude #2004

C57BL/6N-Foxn1^{nu}/Rj



Contact us

B6G #2005

C57BL/6N-Il2rg^{tm1}/Rj


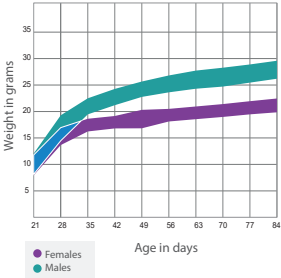


Contact us

MICE MODELS IMMUNODEFICIENT

 Cryopreserved models, price on request

B6R C57BL/6N-*Rag2^{tm1}/Rj* #2006 Price in €


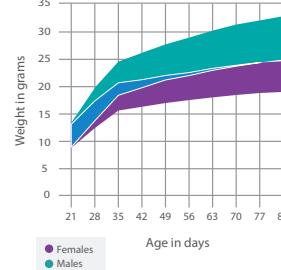
Age in weeks	MALE	FEMALE
3	148,54 €	148,54 €
4	154,18 €	154,18 €
5	159,81 €	159,81 €
6	165,45 €	165,45 €
7	171,09 €	171,09 €
For each extra week, only for females Up to 12 weeks		5,64 €

NOD G #2007 
NOD-*Il2rg^{tm1}/Rj*




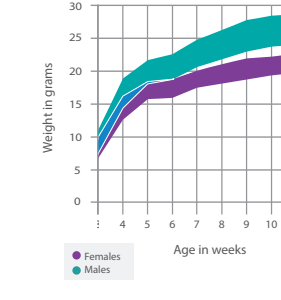
[Contact us](#)

CB17-Scid CB17-*Prkdc^{scid}/Rj* #2008 Price in €

Age in weeks	MALE	FEMALE
3	97,45 €	97,45 €
4	97,45 €	97,45 €
5	100,36 €	100,36 €
6	103,39 €	103,39 €
7	106,93 €	106,93 €
For each extra week, only for females Up to 12 weeks		5,77 €

NOD-Scid NOD.Cg-*Prkdc^{scid}/Rj* #2009 Price in €

Age in weeks	MALE	FEMALE
3	Contact us	129,64 €
4		129,64 €
5		135,93 €
6		140,10 €
7		144,50 €
For each extra week, only for females Up to 12 weeks		4,68 €

MICE MODELS IMMUNODEFICIENT

❄️ Cryopreserved models, price on request

B6R Nude #2010 ❄️
C57BL/6N-*Rag2^{tm1}*-*Foxn1^{nu}*/Rj



CB17-Scid Nude #2011 ❄️
CB17-*Prkdc^{scid}*-*Foxn1^{nu}*/Rj



B6RG #2012 ❄️
C57BL/6N-*Rag2^{tm1}*-*Il2rg^{tm1}*/Rj



B6RGS C57BL/6N-*Rag2^{tm1}*-*Il2rg^{tm1}*-*Sirpa^{NOD}*/Rj #2013



Age in weeks	Price in €	
	MALE	FEMALE
3	228,61 €	216,30 €
4	235,07 €	222,41 €
5	241,54 €	228,53 €
6	251,62 €	237,65 €
7	261,84 €	248,07 €
For each extra week, only for females Up to 12 weeks		4,82 €

NRG NOD-*Rag2^{tm1}*-*Il2rg^{tm1}*/Rj #2014



Age in weeks	Price in €	
	MALE	FEMALE
3	259,90 €	245,90 €
4	267,23 €	252,84 €
5	274,59 €	259,80 €
6	286,05 €	270,17 €
7	297,67 €	282,01 €
8	309,45 €	291,34 €
For each extra week, only for females Up to 12 weeks		5,48 €

NRG cKit #2015
NOD-*Rag2^{tm1}*-*Il2rg^{tm1}*-*Kit^{em1}*/Rj



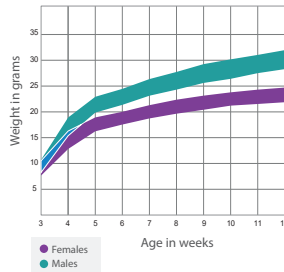
For the current rates, please contact us.

MICE MODELS IMMUNODEFICIENT

 Cryopreserved models, price on request

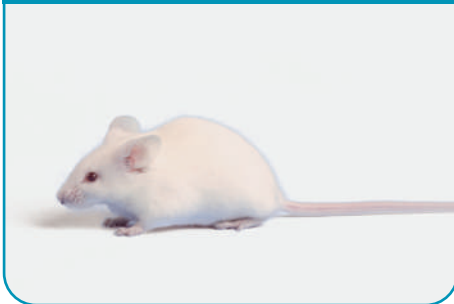
NXG NOD-Prkdc^{scid}-Il2rg^{tm1}/Rj #2016

Price in €



Age in weeks	MALE	FEMALE
3	199,40 €	199,40 €
4	205,03 €	205,03 €
5	210,67 €	210,67 €
6	216,31 €	216,31 €
7	221,94 €	221,94 €
8	227,58 €	227,58 €
For each extra week, only for females Up to 12 weeks		5,64 €
Time-mated pregnant female, guaranteed at E15 on delivery date		376,14 €

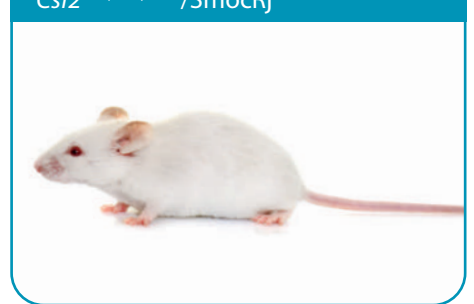
NXG B2M #2017
NOD-Prkdc^{scid}-Il2rg^{tm1}-B2m^{em1}/Rj



NXG hIL-15 #2018
NOD-Prkdc^{scid}-Il2rg^{tm1}-Il15^{em1(IL15)}/Rj



NXG EXL #2019
NOD-Prkdc^{scid}-Il2rg^{em1Smoc}-Il3^{tm1(IL3)Smoc}-
Csf2^{tm1(CSF2)Smoc}/SmocRj



NXG hIL-2	NOD-Prkdc ^{scid} -Il2rg ^{em1Smoc} -Il2 ^{tm1(IL2)Smoc} /SmocRj	#2020
NXG hIL6/hIL6R	NOD-Prkdc ^{scid} -Il2rg ^{em1Smoc} -Il6 ^{tm1(IL6)Smoc} -Il6ra ^{em1(IL6RA)Smoc} /SmocRj	#2021
NXG HLA-A*02:01	NOD-Prkdc ^{scid} -Il2rg ^{tm1Smoc} -B2m ^{em1(B2M-HLA-A*02:01)Smoc} /Rj	#2022

BRGS A2DR2 #2023
C-Rag2^{tm1}-Il2rg^{tm1}-Sirpa^{NOD}-Tg(HLA-A*02-HHD, HLA-DR2)/Rj



BRGS TSLP #2024 
C-Rag2^{tm1}-Il2rg^{tm1}-Sirpa^{NOD}-Tg(Tslp)/Rj



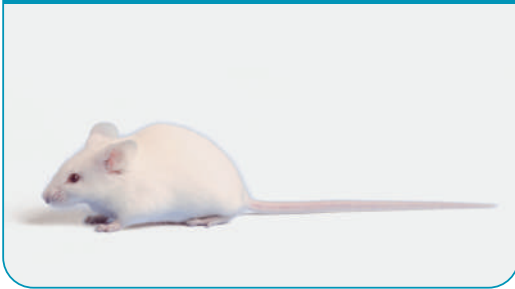
MICE MODELS IMMUNODEFICIENT

 Cryopreserved models, price on request

BRGS UPA

#2025 

C-Rag2^{tm1}-Il2rg^{tm1}-Sirpa^{NOD}-Tg(uPA)/Rj




B6RGS Albinos

#2026 

C57BL/6N-Rag2^{tm1}-Il2rg^{tm1}-Sirpa^{NOD}-Tyr^c/Rj




B6RGS Nude

#2027 

C57BL/6N-Rag2^{tm1}-Il2rg^{tm1}-Sirpa^{NOD}-Foxn1^{nu}/Rj



B6RGS cKit

#2028 

C57BL/6N-Rag2^{tm1}-Il2rg^{tm1}-Sirpa^{NOD}-Kit^{em1}/Rj



NRG Nude

#2029 

NOD-Rag2^{tm1}-Il2rg^{tm1}-Foxn1^{nu}/Rj







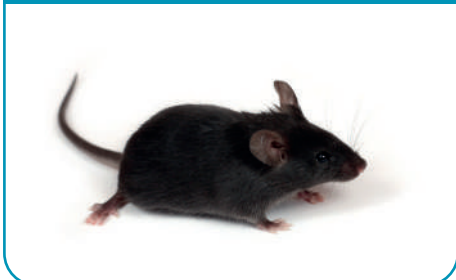

For the current rates, please
contact us.

MICE MODELS HUMANIZED

GENETICALLY

 Cryopreserved models, price on request

IMMUNE CHECKPOINT PATHWAY

B6 hPD-1 #3001 C57BL/6Smoc- <i>Pdcd1</i> ^{em1(PDCD1)} /SmocRj	B6 hPD-L1 #3002 C57BL/6Smoc- <i>Cd274</i> ^{em1(CD274)} /SmocRj	B6 hCTLA-4 #3003 C57BL/6Smoc- <i>Ctla4</i> ^{em1(CTLA4)} /SmocRj
		
B6 hPD-1/hPD-L1 #3004 C57BL/6Smoc- <i>Pdcd1</i> ^{em1(PDCD1)} - <i>Cd274</i> ^{em1(PD-L1)} /SmocRj	B6 hPD-1/hCTLA-4 #3005 C57BL/6Smoc- <i>Pdcd1</i> ^{em1(PDCD1)} - <i>Ctla4</i> ^{em1(CTLA4)} /SmocRj	B6 hPD-L1/hCTLA-4 #3006 C57BL/6Smoc- <i>Ctla4</i> ^{em1(CTLA4)} - <i>Cd274</i> ^{em1(CD274)} /SmocRj
		

B6 hPD-L1/hLAG3	C57BL/6Smoc- <i>Cd274</i> ^{em1(CD274)} - <i>Lag3</i> ^{tm1(LAG3)} /SmocRj	#3007
B6 hCD28	C57BL/6Smoc- <i>Cd28</i> ^{em2(CD28)} /SmocRj	#3008
B6 hICOS	C57BL/6Smoc- <i>Icos</i> ^{em1(ICOS)} /SmocRj	#3009
B6 hOX40	C57BL/6Smoc- <i>Tnfrsf4</i> ^{em1(TNFRSF4)} /SmocRj	#3010
B6 hOX40/hOX40L	C57BL/6Smoc- <i>Tnfrsf4</i> ^{em1(TNFRSF4)} - <i>Tnfsf4</i> ^{em2(TNFSF4)} /SmocRj	#3011
B6 hCD40	C57BL/6Smoc- <i>Cd40</i> ^{em1(CD40)} /SmocRj	#3012
B6 h4-1BB	C57BL/6Smoc- <i>Tnfrsf9</i> ^{tm2(TNFRSF9)} /SmocRj	#3013
B6 hTIGIT	C57BL/6Smoc- <i>Tigit</i> ^{em1(TIGIT)} /SmocRj	#3014
B6 hVISTA	C57BL/6Smoc- <i>Vsir</i> ^{em1(VSIR)} /SmocRj	#3015
B6 hLAG3	C57BL/6Smoc.1295- <i>Cd223</i> ^{tm1(CD223)} /SmocRj	#3016
B6 hTIM3	C57BL/6Smoc- <i>Havcr2</i> ^{em1(HAVCR2)} /SmocRj	#3017

For the current rates, please contact us.

MICE MODELS HUMANIZED

CELL SURFACE PROTEINS

 Cryopreserved models, price on request

B6 hCD19	C57BL/6Smoc-Cd19 ^{em1(CD19)} /SmocRj	#3101
B6 hCD22	C57BL/6Smoc-Cd22 ^{em1(CD22)} /SmocRj	#3102
B6 hCD147	C57BL/6Smoc-Cd147 ^{tm1(CD147)} /SmocRj	#3103
B6 hMARCO	C57BL/6Smoc-Marco ^{em1(MARCO)} /SmocRj	#3104
B6 hCD4	C57BL/6Smoc-Cd4 ^{em1(CD4)} /SmocRj	#3105
B6 hAPOE3	C57BL/6Smoc-Apoe ^{tm3(APOE3)} /SmocRj	#3106
B6 hAPOE4	C57BL/6Smoc-Apoe ^{tm2(APOE4)} /SmocRj	#3107
B6 hTLR8	C57BL/6Smoc-Tlr8 ^{tm2(TLR8)} /SmocRj	#3108
B6 hLILRB4	C57BL/6Smoc-Lilrb4 ^{em1(Lilrb4)} /SmocRj	#3109
B6 hHLA-A2*01	C57BL/6Smoc-H2-D1 ^{em1(HLA-A*02:01)} /SmocRj	#3110
B6 hHLA-A11	C57BL/6Smoc-H2-K1 ^{tm1(HLA-A*11)} /SmocRj	#3111
B6 hCCR8	C57BL/6Smoc-Ccr8 ^{em3(CCR8)} /SmocRj	#3112

ANTIBODY DISCOVERY

B6 hFCRN #3201
C57BL/6N-Fcgrt^{em1(FCGRT)}/Rj



B6 hCD3EDG	C57BL/6Smoc-Cd3e ^{em1(CD3E)} -Cd28 ^{em2(CD28)} /SmocRj	#3202
B6 hCD3E/hCD28	C57BL/6Smoc.129S-Cd223 ^{tm1(CD223)} /SmocRj	#3203

OTHER MODELS OF INTEREST

B6 hVEGFA	C57BL/6Smoc-Vegfa ^{tm1(VEGFA)} /SmocRj	#3301
B6 hPCSK9	C57BL/6Smoc-Pcsk9 ^{em2(PCSK9)} /SmocRj	#3302
B6 hTNFSF14	C57BL/6Smoc-Tnfsf14 ^{tm1(TNFSF14)} /SmocRj	#3303
B6 hMASP2	C57BL/6Smoc-Masp2 ^{em1(MASP2)} /SmocRj	#3304
B6 hMAPT	C57BL/6Smoc-Mapt ^{tm1(MAPT)} /SmocRj	#3305
B6 hSTING	C57BL/6Smoc-Tmem173 ^{tm2(TMEM173)} /SmocRj	#3306
B6 hDPP4	C57BL/6Smoc-Dpp4 ^{em1(DPP4)} /SmocRj	#3307

For the current rates, please contact us.

MICE MODELS HUMANIZED

HUMANIZED IMMUNE SYSTEM

 Cryopreserved models, price on request

NRG HSPC #3801
NOD-*Rag^{tm1}-Il2rg^{tm1}*/Rj



NXG HSPC #3802
NOD-*Prkdc^{scid}-Il2rg^{tm1}*/Rj



NRG cKit HSPC #3803
NOD-*Rag2^{tm1}-Il2rg^{tm1}-Kit^{em1}*/Rj



BRGS A2DR2 HSPC #3804
C-*Rag2^{tm1}-Il2rg^{tm1}-Sirpa^{NOD}-Tg(HLA-A*02-HHD, HLA-DR2)*/Rj



BRGS TSLP HSPC #3805
C-*Rag2^{tm1}-Il2rg^{tm1}-Sirpa^{NOD}-Tg(Tslp)*/Rj



NXG EXL HSPC #3806
NOD-*Prkdc^{scid}-Il2rg^{em1Smoc}-Il3^{tm1(IL3)Smoc}-Csf2^{tm1(CSF2)Smoc}*/SmocRj



NXG hIL-15 HSPC #3807
NOD-*Prkdc^{scid}-Il2rg^{tm1}-Il15^{em1(IL15)}*/Rj




NXG hIL-2 HSPC	NOD- <i>Prkdc^{scid}-Il2rg^{em1Smoc}-Il2^{tm1(IL2)Smoc}</i> /SmocRj	#3808
NXG hIL6/hIL6R HSPC	NOD- <i>Prkdc^{scid}-Il2rg^{em1Smoc}-Il6^{tm1(IL6)Smoc}-Il6ra^{em1(IL6RA)Smoc}</i> /SmocRj	#3809
NXG HLA-A*02:01 HSPC	NOD- <i>Prkdc^{scid}-Il2rg^{tm1Smoc}-B2m^{em1(B2M-HLA-A*02:01)Smoc}</i> /Rj	#3810

NXG PBMC #3811
NOD-*Prkdc^{scid}-Il2rg^{tm1}*/Rj



NXG B2M PBMC #3812
NOD-*Prkdc^{scid}-Il2rg^{tm1}-B2m^{em1}*/Rj



For the current rates,
please contact us.

RATS

RESEARCH MODELS

All our technical sheets available on www.janvier-labs.com

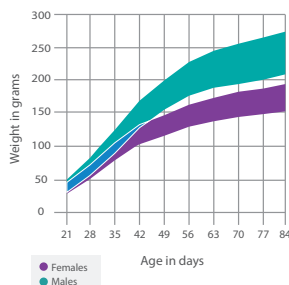


RATS MODELS STANDARD

INBRED

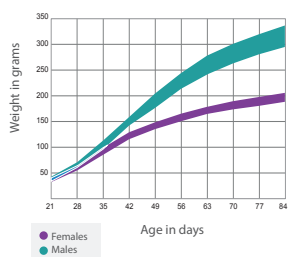
 Cryopreserved models, price on request

DARK AGOUTI DA/HanRj #7001



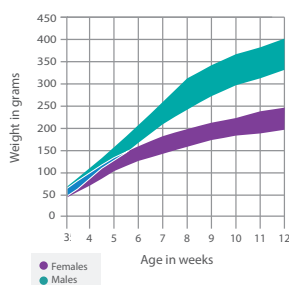
Age in weeks	Price in €	
	MALE	FEMALE
3	39,05 €	39,05 €
4	42,57 €	42,57 €
5	47,09 €	47,09 €
6	52,15 €	52,15 €
7	62,15 €	62,15 €
8	68,35 €	68,35 €
9	75,30 €	75,30 €
For each extra week Up to 12 weeks	6,98 €	6,98 €
Female with litter (5-7 pups)		218,13 €
Time-mated pregnant female		Contact us
Old breeders	30,77 €	30,77 €

LEWIS LEW/Rj #7002



Age in weeks	Price in €	
	MALE	FEMALE
3	38,88 €	38,88 €
4	41,55 €	41,55 €
5	47,11 €	47,11 €
6	53,57 €	53,57 €
7	56,76 €	56,76 €
8	60,30 €	60,30 €
9	67,95 €	67,95 €
For each extra week Up to 12 weeks	5,73 €	5,73 €
Female with litter (5-7 pups)		230,07 €
Time-mated pregnant female, guaranteed at E15 on delivery date		208,70 €
Not-guaranteed time-mated pregnant female		180,08 €
Old breeders	38,88 €	38,88 €

FISCHER F344/HanZtmRj #7003



Age in weeks	Price in €	
	MALE	FEMALE
3	39,73 €	39,73 €
4	41,81 €	41,81 €
5	47,31 €	47,31 €
6	52,23 €	52,23 €
7	60,12 €	60,12 €
8	63,34 €	63,34 €
For each extra week Up to 12 weeks	5,52 €	5,52 €
Female with litter (5-7 pups)		302,27 €
Time-mated pregnant female		Contact us
Old breeders	39,73 €	39,73 €

WISTAR KYOTO #7004

WKY/Rj



BROWN NORWAY #7005

BN/Rj



BLACK HOODED #7006

PVG/Rj

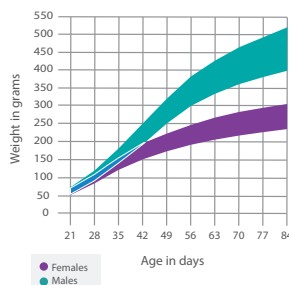


For the current rates, please contact us.

RATS MODELS STANDARD

OUTBRED

WISTAR RjHan:WI #7101

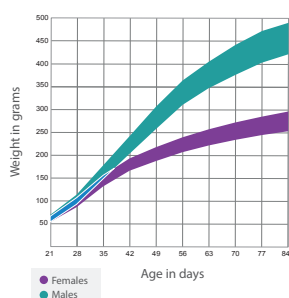


	FEMALE
Female with litter (10-12 pups)	122,89 €
Time-mated pregnant female, guaranteed at E15 on delivery date	117,73 €
Not-guaranteed time-mated pregnant female	87,64 €

Weight in grams*	MALE	FEMALE
Up to 59	12,35 €	12,35 €
60 to 74	14,17 €	14,17 €
75 to 99	17,76 €	17,76 €
100 to 124	19,78 €	19,78 €
125 to 149	21,77 €	21,77 €
150 to 174	24,01 €	24,01 €
175 to 199	26,12 €	26,12 €
200 to 224	27,83 €	29,46 €
225 to 249	29,42 €	31,57 €
250 to 274	31,28 €	
275 to 299	34,07 €	
300 to 324	38,64 €	
325 to 349	40,32 €	
For each extra week <i>Up to 15 weeks</i>	3,18 €	3,18 €
Old breeders	12,35 €	12,35 €

*weight during packaging

SPRAGUE DAWLEY RjHan:SD (CD*) #7102

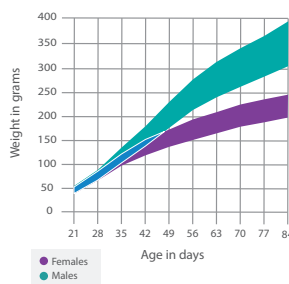


	FEMALE
Female with litter (10-12 pups)	136,28 €
Time-mated pregnant female, guaranteed at E15 on delivery date	143,54 €
Not-guaranteed time-mated pregnant female	97,85 €

Weight in grams*	MALE	FEMALE
Up to 59	12,26 €	12,26 €
60 à 74	13,25 €	13,25 €
75 à 99	15,97 €	15,97 €
100 à 124	17,77 €	17,77 €
125 à 149	19,32 €	19,32 €
150 à 174	21,05 €	21,05 €
175 à 199	22,49 €	22,49 €
200 à 224	24,52 €	24,52 €
225 à 249	24,96 €	24,96 €
250 à 274	26,21 €	26,21 €
275 à 299	27,45 €	
300 à 324	31,38 €	
325 à 349	33,00 €	
For each extra week <i>Up to 12 weeks</i>	3,05 €	3,05 €
Old breeders	12,26 €	12,26 €

*weight during packaging

LONG EVANS Rj:LE #7103



	FEMALE
Female with litter (10-12 pups)	148,42 €
Time-mated pregnant female, guaranteed at E15 on delivery date	146,66 €
Not-guaranteed time-mated pregnant female	107,54 €

Weight in grams*	MALE	FEMALE
Up to 49	30,97 €	30,97 €
50 à 74	34,63 €	34,63 €
75 à 99	38,29 €	38,29 €
100 à 124	41,96 €	45,65 €
125 à 149	45,65 €	50,82 €
150 à 174	48,23 €	56,71 €
175 à 199	50,82 €	59,74 €
200 à 224	53,76 €	63,08 €
225 à 249	56,71 €	
250 à 274	59,74 €	
275 à 299	63,08 €	
300 à 324	64,89 €	
For each extra week <i>Up to 12 weeks</i>	3,66 €	3,66 €
Old breeders	30,97 €	30,97 €

*weight during packaging

RATS MODELS STANDARD

OUTBRED

 Cryopreserved models, price on request

FAWN HOODED

#7104 

Rj:FH



Contact us

Old WISTAR Rat RjHan:WI #7105



In stock

Age in months	Price in € MALE	Age in months	Price in € MALE	Age in months	Price in € MALE
4	76,45 €	9	204,41 €	14	367,44 €
5	104,36 €	10	232,28 €	15	395,35 €
6	127,10 €	11	262,95 €	16	477,17 €
7	151,30 €	12	288,18 €	17	509,51 €
8	179,79 €	13	327,69 €	18	537,45 €

For females and animals older than 18 months, please contact us.

Upon reservation at birth

Age in months	Price in € MALE	Age in months	Price in € MALE	Age in months	Price in € MALE
4	68,56 €	9	148,20 €	14	238,60 €
5	90,95 €	10	159,20 €	15	277,79 €
6	100,18 €	11	181,66 €	16	333,69 €
7	120,77 €	12	192,79 €	17	353,83 €
8	139,85 €	13	215,80 €	18	370,66 €

For females and animals older than 18 months, please contact us.

In stock

Depending on the characteristics of your request (nature, age and number of animals), we will tell you how long it will take to receive your animals and the "in stock" price will be applied.

Upon reservation at birth

If you wish to anticipate your order and benefit from a preferential "reservation" price, our 3-month-old animals will be raised to the desired age to meet your needs.

JANVIER LABS aged WISTAR male rats are animals selected at weaning and are only dedicated for ageing. The animals are kept for ageing in their original production units and are bred until the age of up to 24 months in a controlled environment and health status.

Note: WISTAR rats have never been used as breeders.

In order to evaluate the feasibility of ageing a model, don't hesitate to contact us.

RATS MODELS STANDARD

MUTANT

❄️ Cryopreserved models, price on request

SPRAGUE DAWLEY Hairless ❄️

Rj:SDH-*Dsg4*

#7201



RATS MODELS IMMUNODEFICIENT

FISCHER Nude ❄️

#8001

F344-*Foxn1^{nu}*/Rj



LOU Nude ❄️

#8002

LOU-*Foxn1^{nu}*/Rj



ATHYMIQUE Nude Rat ❄️

Rj:ATHYM-*Foxn1^{nu}*

#8003



SDS ❄️

#8004

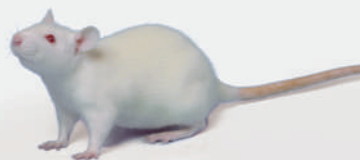
SD- *Cd47^{em1}*/Rj



SDG ❄️

#8005

SD- *Il2rg^{em1}*/Rj



SDR ❄️

#8006

SD- *Rag1^{em1}*/Rj



SDRGS ❄️

#8007

SD- *Rag1^{em1}*-*Il2rg^{em1}*-*Cd47^{em1}*/Rj



For the current rates, please contact us.

OTHER RODENTS

All our technical sheets available on www.janvier-labs.com



OUTBRED

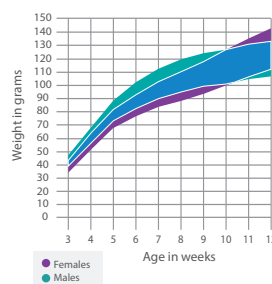
Goldhamster RjHan:AURA #9001

Price in €



Immediate availability

A reference model for the study of COVID (Sars-CoV-2) and the development of associated therapies



Weight in grams	MALE	FEMALE
40 to 49	38,73 €	38,73 €
50 to 59	43,16 €	43,16 €
60 to 79	50,10 €	50,10 €
80 to 99	53,78 €	53,78 €
100 to 119	61,48 €	61,48 €
For each extra week Up to 12 weeks	7,71 €	7,71 €
Female with litter		206,46 €
Time-mated pregnant female		Contact us
Old breeders	38,73 €	38,73 €

*weight during packaging

Gerbil Rj:MON #9501



Price on request

ASSOCIATED SERVICES



SECURE AND BREED OUR MODELS

CRYOPRESERVATION

Description		Objectives and details of the services
Sperm cryopreservation using the JAX™ Sperm Cryo Kit		
Sperm cryopreservation of 2 ♂ > 10 weeks		Objective: 20 sperm flakes + quality control The service includes: <ul style="list-style-type: none"> - The reception of your animals in our animal facilities - Biopsy collection and archiving - Cryopreservation of sperm using the JAX™ Sperm Cryo Kit - <i>In vitro</i> QC performed on ♀ JANVIER LABS: sperm fertilization rate after IVF - Communication of a detailed report
Embryo cryopreservation		
Cryopreservation of embryos of your model according to the mating scheme previously defined ♂ of your model x ♀ WT JANVIER LABS of defined genetic background or ♂ of your model x ♀ of your model		Objective: 250 embryos or 150-200 frozen embryos of the line + quality control The service includes: <ul style="list-style-type: none"> - The reception of your animals in our animal facilities - Biopsy collection and archiving - Superovulation treatment of ♀ and their crossebreeding - Freezing 250 embryos or 150-200 embryos - <i>In vitro</i> quality controls; - Communication of a detailed report
Mixed cryopreservation embryos and sperm		
Mixed cryopreservation of sperm and embryos of a model		Objective: 75 to 100 frozen embryos from the line + 20 sperm flakes + quality controls: The service includes: <ul style="list-style-type: none"> - The reception of your animals in our animal facilities - Biopsy collection and archiving - Superovulation treatment of ♀ and their crossebreeding - Collection and freezing of a minimum of 75 embryos - <i>In vitro</i> quality control on each batch of frozen embryos - Cryopreservation of sperm using the JAX™ Sperm Cryo Kit - <i>In vitro</i> QC performed on ♀ JANVIER LABS: sperm fertilization rate after IVF - Communication of a detailed report
Quality control from cryopreserved sperm or embryos		
Sperm/Embryos	<i>in vitro</i> quality control (QC1)	Sperm fertilization rate after IVF + detailed report Embryo development rate after culture + detailed report
	<i>in vitro</i> quality control (QC2)	Birth rate after embryo transfer on pseudopregnant ♀ Biopsy samples for genotyping + Sending the report
Cryo-storage of straws		
Cryo-storage of frozen sperm or embryos of a model		Lined, secure and supervised Price per year and model

SECURE AND BREED OUR MODELS

ASSISTED REPRODUCTION

Model revitalization from frozen sperm

Model revitalization from cryopreserved sperm

Objectives: Restitution of a minimum of 3 to 6 males and 3 to 6 females SOPF or ♀ PREGNANT SOPF carrying embryos of the model

The service includes:

- *In vitro* fertilization
- Transfer of fertilized embryos into pseudopregnant
- Isolating reimplanted ♀ and their offspring for 11 weeks (3 wk gestation + 8 wk age of line SOPF animals)
- A complete health check
- Communication of a detailed report
- The minimum restitution of 3 to 6 males and 3 to 6 females SOPF or PREGNANT SOPF ♀

Model revitalization from frozen embryos

Model revitalization from cryopreserved embryos

Objectives: Restitution of a minimum of 3 to 6 males and 3 to 6 females SOPF or PREGNANT SOPF ♀ carrying embryos of the model

The service includes:

- Thawing of embryos
- Reimplantation of embryos in pseudopregnant
- Isolator housing of reimplanted ♀ and their offspring for 11 weeks (3 wk gestation + 8 wk age of line SOPF animals)
- A complete health check
- Communication of detailed reports
- The minimum restitution of 3 to 6 males and 3 to 6 females SOPF or PREGNANT SOPF ♀

Rederivation by embryo transfer from your model

Decontamination of models after isolation, cleansing and transfer of embryos in SOPF surrogate mothers

Objectives: Restitution of a minimum of 3 to 6 males and 3 to 6 females SOPF or PREGNANT SOPF ♀ carrying embryos of the model

The service includes:

- The reception of your animals in our animal facilities
- Biopsy collection and archiving
- Coupling your ♂ with your ♀ or with predefined ♀ WT background
- Collection, cleansing and transfer of embryos in pseudopregnant
- Isolator housing of reimplanted ♀ and their offspring for 11 weeks (3 wk gestation + 8 wk age of line SOPF animals)
- Communication of detailed reports
- A complete health check
- The conservation of your animals of origin remain 15 days after shipment of healthy animals.
- The minimum restitution of 3 to 6 males and 3 to 6 females SOPF or PREGNANT SOPF ♀

Quick colony expansion by *in vitro* fertilisation and embryo transfer

Production of batches of homogeneous and consistent SOPF experimental or future breeding animals by Single or Double *In Vitro* fertilization from freshly collected or thawed sperm

Objectives: Restitution of batches of homogeneous experimental animals and SOPF.

- ♀ pregnant females carrying embryos of your model
- SOPF animals 4 or 8 weeks old

The service includes:

- Production of batches of SOPF animals
- Their complete health control
- Return of animals generated

SECURE AND BREED OUR MODELS

NEW

Production of JANVIER LABS model animals by single or double *in vitro* fertilization in customized quantities

<p>Customized production of highly homogeneous experimental animal batches:</p> <ul style="list-style-type: none"> • Same date of birth • SOPF health status • Simultaneous production of WT or Heterozygous controls • Microbiota homogeneity 	<p>Objectives: Restitution of batches of homogeneous experimental animals and SOPF.</p> <ul style="list-style-type: none"> - pregnant ♀ - Weaned SOPF animals 3-8 weeks old as needed <p>The service includes:</p> <ul style="list-style-type: none"> - Production of batches of SOPF animals - Their complete health control - Return of animals generated
--	--

High Speed Backcross

<p>Transfer of genetic modification from donor to recipient in less than one year</p>	<p>Objectives: production of inbred models with a genetic modification of interest taken from another model or a non-insulated model</p> <p>The service includes:</p> <ul style="list-style-type: none"> - The reception of your animals in our animal facilities - Biopsy collection and archiving - Performing 5 genetic purification <i>in vitro</i> fertilizations; - Transfer of fertilized embryos into pseudogestants - Housing in isolator of reimplanted ♀ - Genetic controls of ♀ products - The return of inbred stock of interest - A complete health check - Communication of a detailed report
---	---

Options

<p><i>In vivo</i> quality control</p>	<p>Birth rate: number of pups / number of embryos reimplanted</p>
<p>Animal identifications and biopsies obtained</p>	<p>Electronic identification (ISO standard) + ear or caudal biopsies</p>

Quick colony expansion by *in vitro* fertilisation and embryo transfer

<p>Pooling of several Reproductive Sciences services such as the production of SOPF animals of your model and its cryopreservation</p>	<p>Objectives:</p> <ul style="list-style-type: none"> - Sharing of the costs of repatriation, accommodation of your animals and handling. - Attractive rates
--	--

SECURE OUR RESEARCH

whilst saving resources through sperm cryopreservation of your mice with the JAX™ Sperm Cryo Kit*



THE KIT CONSISTS OF 2 PARTS:

Media

- 3 ml vials, a vial is provided per strain
- In each Kit, an additional vial is included for training purposes

25 straws are provided per strain in each Kit

- 20 for storage and 5 extra
- 4 cassettes for permanent storage and transport which contain 5 straws each
- Straws and cassettes with unique identification numbers

CRYOPRESERVATION OF SPERM:

- Enables you to **dramatically reduce costs** associated with mouse colony maintenance, particularly of low use strains
- **Protects your valuable mouse strains** against disease, breeding cessation and disaster

Protects your research by:

- Limiting genetic drift
- Preventing the spontaneous loss of phenotype
- Enabling easy recovery of SOPF mice: no quarantine required upon arrival
- Facilitating strain transfer to collaborators

SPERM CRYOPRESERVATION KIT

Sperm cryopreservation kit
JAX™ Sperm Cryo Kit Technical sheet available on www.janvier-labs.com
for 3 strains, for 6 strains and for 9 strains

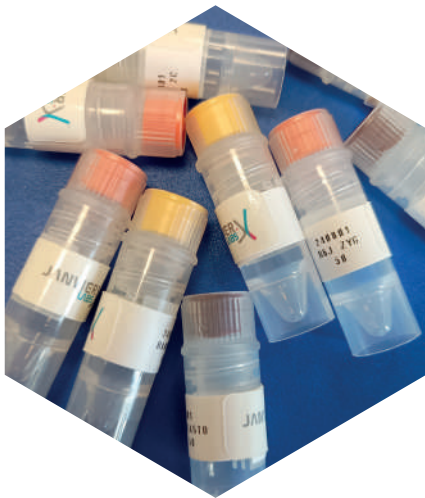
JANVIER LABS is the exclusive commercial provider of The Jackson Laboratory's JAX™ Sperm Cryo Kit in the following countries: Austria, Belgium, the Czech Republic, France, Germany, Hungary, Italy, Netherlands, Poland, Slovakia, Spain, Switzerland, Denmark, Finland, Norway, Sweden. JAX™ is a trademark of The Jackson Laboratory registered in the United States. All rights reserved. Distribution non-exclusive of The Jackson Laboratory's JAX™ Sperm Cryo Kit in UK.

CUSTOMISE OUR MODELS GENETICALLY MODIFIED

EMBRYO KITS TO FACILITATE YOUR RESEARCH

NEW

Embryo kit for direct access to embryos at various preimplantation stages with the JANVIER LABS genetic background



Description	Objectives and details of the services
Embryo Kits <i>Technical sheet available on www.janvier-labs.com</i>	
EAZYGOTE - Zygotes Kit	
Small	250 frozen zygotes
Large	1,000 frozen zygotes
QUICKBLASTO® (blastocysts for ES cell injection)	
Small	250 frozen embryos
Large	1,000 frozen embryos
2CELL KIT	
Small	250 frozen 2-cell stage embryos
Large	1,000 frozen 2-cell stage embryoembryo
MII Oocytes	
Small	250 frozen MII Oocytes
Large	1,000 frozen MII Oocytes

QUICKBLASTO® is a registered trademark of JANVIER LABS. All rights reserved.

CUSTOMISED MODELS SUPPORT

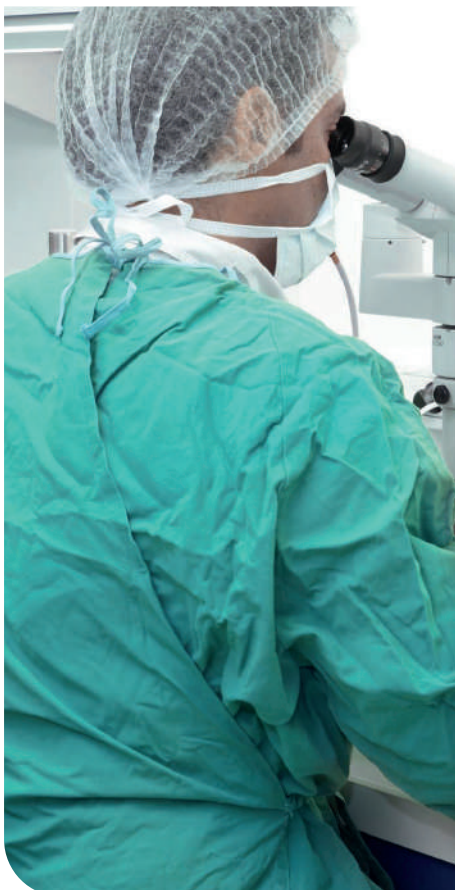
Choose a complete support of your model, from the creation by our partners to delivery

JANVIER LABS has created a department « Customised Models Support » to support the creation of genetically modified research models (overexpression of genes, knock-out, knock-in, RNAi, genetrap, conditional or inducible systems,...).

You want to create your genetically modified mouse or rat model?

Benefit from our partners for the creation of models and a complete support by our departments from the creation until the delivery taking advantage of all our associated services.

All stages of your project are supported by a unique and dedicated project manager in order to assure the strict respect of your needs and your requirements. Our project managers are characterized by their responsiveness, their professionalism, their expertise and their ability to adapt to the customer's goals.



FLEXIBILITY • RESPONSIVENESS • PROFESSIONALISM • EXPERTISE • TRACEABILITY

CONTRACT BREEDING

Your project is supported by a dedicated Project Manager who will accompany you, inform you and advise you throughout the process. From the establishment of the strategy focused on achieving your objectives, until the delivery of your animals of interest, our Project Managers are distinguished by their responsiveness, their professionalism and their ability to adapt to your objectives.

Description

Contract breeding - SPF⁴ or SOPF^{4,5} statut

- Each Breeding strategy is personalized according to the needs and specificities of each project
- Mating, weaning, separation, euthanasia, gestation monitoring
- SOPF or SPF health monitoring controls
- Follow-up and scientific support of the project by a dedicated project manager
- Communication of a monthly follow-up report - Monthly videoconferencing
- Dedicated customised breeding software (AniBio), 24/7 (module animals, breeding, financial management, services) :

Genetic analysis

- Evaluation of the genetic purity of a line by analysis of 10,000 SNPs (estimation of inbreeding, identification of primary and secondary genetic backgrounds, presence of certain genetic constructs, etc.)
- Real-time PCR genotyping for one or more genes per gene
 - Fast and reliable results (24 to 48 hours)
 - Development of PCR protocols

Speed Congenics

- Analysis at each generation of a panel of 10,000 SNPs (mouse) or 740 SNPs (rat)
- At least 50% time reduction compared to classic backcross
- In a maximum of 5 generations, the animals are composed of more than 99.9% of the recipient genome => obtaining a congenic lineage
- Congenic lineages reduce phenotypic variability due to genetic background => reproducible experiments over time

¹ Biopsies for genotyping if necessary

² This service can be performed by The Jackson Laboratory

³ Subject to the quality of the provided material in case of cryopreservation externally

⁴ Free from all pathogens registered in the FELASA list

⁵ Free from opportunists defined by JANVIER LABS

PREPARE OUR MODELS

BIOLOGICAL PRODUCTS

Price on request

Products	Species and characteristics of the models
Blood products	
Whole blood	All species
Plasma	All species
Serum	All species
Serum for embryo culture	Outbred rat

Products	Species and characteristics of the models
Organ sampling	
Nervous system Brain with or without the cerebellum, spinal cord, pituitary gland	All species
Endocrine system Adrenal glands, thyroid	
Immune system Thymus, spleen, lymph node	
Digestive system Tongue, salivary glands, stomach, intestine (duodenum, jejunum, ileum), caecum, colon, liver, pancreas, esophagus	
Adipose tissue Mesenteric adipose tissue, peri-gonadal adipose tissue, Perirenal adipose tissue, brown adipose tissue	
Urogenital system Kidneys, bladder, prostate, testes, seminal vesicle, ovaries, uterus	
Cardiopulmonary system Lungs, heart, trachea, artery	
Other: skin, bones, muscle, eyes, tail...	

Products	Species and characteristics of the models
Other biological materials	
Urine	Rats, mice
Feces	All species
Milk (rat, mouse)	Rats, mice
Amniotic fluid	All species
Cerebrospinal fluid	Rats



BENEFIT FROM A LARGE RANGE OF SERVICES TO FACILITATE YOUR RESEARCH

SURGERY

Price on request

Services	Species and characteristics of the models	
Excision and ligature surgery		
Ovariectomy	From 4 weeks of age	
Ovario-hysterectomy		
Hysterectomy		
Splenectomy		
Vasectomy		
Castration		
Adrenalectomy		
Thyroid-parathyroidectomy		
70% hepatectomy (rat, mouse)		
Nephrectomy (unilateral or 5/6)		
Tubal ligation		
Ureter ligation		
Other types of ligation		
Catheterisation		
Non-vascular catheters:		
Bile duct	Rats with a minimum weight of 200 g, Pregnant female rats (from day 9-10), Mice (jugular and non-vascular catheters on the digestive tract)	
Stomach*, duodenum*, jejunum*, ileum*, colon*, intra-peritoneal* (injection)		
Bladder*		
Vascular catheters:		
Jugular vein		
Femoral vein		
Carotid artery		
Femoral artery		
Double vascular catheter		
Double vascular / non-vascular catheter		

* Infusion only

The weight of the animal required on the purchase order corresponds to the weight at the time of the operation.

The age of the animal required on the purchase order corresponds to the age at the time of shipment.

The price of the animal will be added to the price of the operation.

EXPERIMENTAL PROTOCOLS

The experimental protocol is defined according to a preliminary questionnaire sent to the researcher to define the needs, the organization of the protocol, the conditions of achievement, the objectives and its feasibility. Once the specifications have been established, they will be submitted to the JANVIER LABS ethics committee (MESR registration no. 078) for validation.

Services (non-exhaustive list of protocols)	Species and characteristics of the models
Customised protocols and models	
Examples of protocols: <ul style="list-style-type: none"> Restricted diet studies Inorganic or organic implant placement and subsequent monitoring including its evolution and its interaction with the animal Pristane injection for Antibody Development Models 	All species depending on the needs of the protocol and its feasibility
Pathological models	
Examples of pathological experimental models: <ul style="list-style-type: none"> Surgery model: osteoporosis model in rat by ovariectomy of females Diet-induced model: induced obesity by diet, hypercholesterolemia / atherosclerosis induced by high saturated fat and cholesterol diet, hypertriglyceridemia / insulin tolerance by high fructose / sucrose diet 	All species

PACKAGING AND TRANSPORT



100% IN-HOUSE TRANSPORT

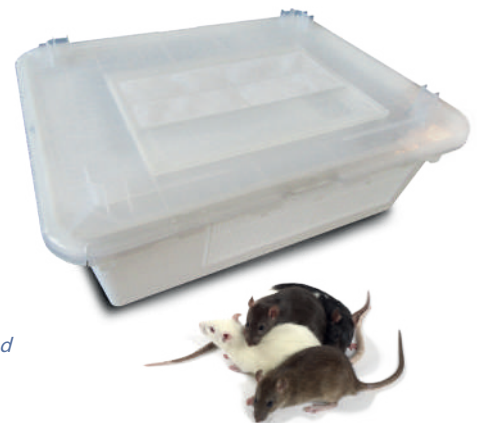
At **JANVIER LABS**, we have decided to provide this service in-house in order to reassure ourselves that it is carried out in a manner which meets our expectations. We manage the whole logistics chain from our site to the door of your animal facility.

Our transport policy outside Europe

So that the distance is not an obstacle in order for you to be supplied with quality animals, **JANVIER LABS** has selected specialized partners for the transport of laboratory animals for the most remote or specific destinations. Each of our partners has been audited and validated by our quality team and our vets.

JANVIER LABS' INNOVATION

An innovative up to date transport packaging entirely recyclable has been **designed and created by JANVIER LABS** for a 100% secured transport.



«As the *SPF* and *SOPF* status of your research models must be guaranteed under any condition»

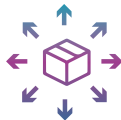
On our transport packaging you will find all the necessary information to welcome your rodents correctly



The most important transport network in Europe



45,000 kms each week under rigorous sanitary conditions



Deliveries weekly in all Europe



A team of over 25 drivers



A fleet of 23 trucks

A REPATRIATION SERVICE WHEREVER YOU ARE

4 of our vehicles are also equipped with hermetic boxes for the repatriation of non-SPF animals or biological materials (sperm or embryo).

WEEKLY DELIVERIES TO CENTRAL EUROPE

FLEXIBILITY, REACTIVITY AND RELIABILITY!

We manage administrative procedures for your delivery.



Packaging (measurements)	Price
Packaging JANVIER LABS - SPF	On request
Packaging JANVIER LABS - SOPF	
Packaging for catheterised animals	
Partitioned packaging	
Dry ice packaging - large and small model	
Refreeze packaging	
Transport gel in bag (sold by 10 or 30)	

PACKAGING ADAPTED TO ANIMAL'S HEALTH STATUS

Transport gel provided

All of our packaging contains a drink substitute to rehydrate the animals during transit. This product guarantees the preservation of the SOPF and SPF status.



STRESS MANAGEMENT AND PROTECTION OF ANIMAL WELFARE DURING THE JOURNEY

In order to minimise the animals' stress during journeys, we have put appropriate measures in place, like driving on motorways and outsourced teams of drivers. Thanks to these measures the journeys are of a reduced length, without stops and more comfortable for the animals in order to guarantee optimal stability conditions for our models at the point of delivery.



YOUR SATISFACTION: OUR PRIORITY

OUR COMMITMENTS: ADAPTABILITY AND REACTIVITY

- Flexibility in order-taking
- Tailor-made response to each of your requirements
- Personalised accompaniment for your projects
- A scientific follow-up specialised in rodents breeding
- Sales assistance on hand and ready to help
- Local sales representative for your specific needs
- Team of veterinary surgeons and experts to advise you
- An ISO 9001 certified company for all our activities



MY NOTES

GENERAL TERMS AND CONDITIONS OF SALE

JANVIER LABS is an S.A.S. (simplified joint-stock company) under French law, with its registered office at Le Genest Saint Isle (53940) - 22 Route des Chênes Secs, registered with the Laval Trade and Companies Register under number 340 663 079.

JANVIER LABS produces, breeds and sells rodents intended to be used in experimental procedures for scientific purposes (the "RESEARCH MODELS"), and their derived products. It also provides associated services such as laboratory services, reproductive sciences or contract breeding and their ancillary products or services, even sold separately (the "SERVICES").

1 - SCOPE OF APPLICATION

1.1 In accordance with Article L 441-1 III of the French Commercial Code, these General Terms and Conditions of Sale and Services (the "GTCSS") form the sole basis of the commercial relationship between the Parties.

They apply to all sales and services by JANVIER LABS to its CUSTOMERS, professional buyers (the "CUSTOMER"), of RESEARCH MODELS, their derived products and by-products, or SERVICES (together the "PRODUCTS"), as these PRODUCTS are described in the JANVIER LABS catalogue (the "CATALOGUE"), on its website <http://www.janvier-labs.com>, and/or in quotes, offers or equivalent documents issued by JANVIER LABS.

1.2 The information in the JANVIER LABS CATALOGUE, leaflets and price list is given for information only. It may be modified at any time by JANVIER LABS.

1.3 The GTCSS are attached to the CATALOGUE and appended to the JANVIER LABS offer. They are also available on the JANVIER LABS website. By placing an order, the CUSTOMER acknowledges that they have read these GTCSS and accepts them unreservedly (the "ORDER"). They undertake to ensure that its employees and any third parties collaborating in the research it conducts or in which it participates comply with these GTCSS. They therefore waive the right to avail themselves of any contradictory document, including their own general terms and conditions of purchase.

1.4 Once negotiated and accepted by JANVIER LABS, any deviation from these GTCSS must be the subject of a written agreement prior to their application, signed by the CUSTOMER and JANVIER LABS (the "Parties").

1.5 The fact that JANVIER LABS at any times fails to exercise a prerogative recognised by these GTCSS or does not require the performance of one of these clauses, may in no case be interpreted as a modification of said clause, nor as a waiver by JANVIER LABS of the right to exercise the said prerogative or to require its performance in the future.

2 - VALIDITY OF THE GENERAL TERMS AND CONDITIONS

2.1 JANVIER LABS reserves the right to modify its GTCSS at any time.

2.2 The current GTCSS are published on the JANVIER LABS website. They are therefore available at all times and apply to future ORDERS.

3 - MAKING THE ORDER

3.1 JANVIER LABS may provide advice in connection with the placing of the ORDER. However, as a professional specialising in the field of research, the CUSTOMER remains entirely and solely responsible for their choice of ORDER and the completeness of the information they have provided to JANVIER LABS.

3.2 The CUSTOMER's duty to inform and prerequisites:

3.2.1 In particular, in the case of SERVICES to be rendered on biological material supplied by the CUSTOMER or by a third party at the CUSTOMER's request (the "BIOLOGICAL MATERIAL"), the CUSTOMER undertakes to provide, prior to their ORDER, all the information, accurate and complete data available to them concerning their BIOLOGICAL MATERIAL, which may have an impact on the proper provision of the SERVICES, in particular any difficulties in the reproductive performance of the rodent line(s) concerned, or even its strength, purity, stability, and the requirements for proper storage and safe handling of such BIOLOGICAL MATERIAL.

3.2.2 When BIOLOGICAL MATERIAL contains GMOs, it must correspond to GMO risk class I to the exclusion of any other risk class. The CUSTOMER must send a copy of the receipt for its declaration, or a copy of the approval showing the project(s) involving the GMOs concerned, with its request for a quotation.

3.2.3 BIOLOGICAL MATERIAL must be zoonosis-free.

3.2.4 The information provided by the CUSTOMER regarding the SERVICES, including the Project Information Sheet, and the GTCSS in all cases, form an integral part of the ORDER.

3.2.5 In general, any change in the CUSTOMER or the recipient of the results of the SERVICES (the "RESULTS") must be brought to the attention of JANVIER LABS by the CUSTOMER as soon as possible. This notice must include all useful information, such as, and without this list being exhaustive: the identity, address, invoicing address, Intracom VAT rate, bank details, of the new recipient and payer, the transfer date, etc., as well as the data necessary for JANVIER LABS to continue providing the SERVICE. Failing this, the CUSTOMER will remain liable, without reservation or exception, for all obligations and sums due under the ORDER until full payment has been made and the ORDER has been cancelled.

3.3 How to order:

3.3.1 To be valid as an ORDER, the offer or quote, which may be accompanied by any special conditions negotiated, must be accepted in writing, including by email, and received by JANVIER LABS before the end of its validity period.

3.3.2 The ORDER is only validly formed after its express acceptance by JANVIER LABS via the acknowledgement of receipt of the order sent to the CUSTOMER ("the AR") and payment of any deposit provided for. The CUSTOMER has 12 working hours to check the contents of the AR received and to make any observations. In the event of any discrepancy between the AR and the ORDER, the latest AR shall prevail.

3.3.3 Where the provision of the SERVICE requires authorisation from the French Ministry of Higher Education, Research and Innovation ("MESRI"), the ORDER will only be validly made once the necessary authorisation has been obtained.

4 - MODIFYING/CANCELLING THE ORDER

4.1 After the 12-hour period specified in sub-section 3.3.2 above, the ORDER is irrevocable.

4.2 Any modification to the ORDER requested by the CUSTOMER will only be taken into account within the limits of JANVIER LABS' possibilities and at its sole discretion. This request must be made in writing before the date scheduled for delivery or performance of the PRODUCTS concerned. JANVIER LABS may make the modification subject to the CUSTOMER signing a specific purchase order, particularly in the event of a price or lead time adjustment.

4.3 If the CUSTOMER cancels the ORDER once the AR has become final, and for any reason whatsoever other than force majeure, the deposit paid will be kept by JANVIER LABS. It will be deducted from the amount of the penalties or costs mentioned below if they are higher.

In all cases, the CUSTOMER will have to pay, depending on the case:

a) For SERVICES: (i) the portion of the SERVICES already rendered, (ii) any expenses incurred by JANVIER LABS in rendering the SERVICE that cannot be cancelled, and (iii) the expenses and costs incurred by JANVIER LABS as a result of this cancellation of the ORDER.

b) For RESEARCH MODELS, their derived products and by-products: a penalty calculated on the total amount excluding taxes of the RESEARCH MODELS, derived products or by-products concerned, according to the number of full working days remaining between the delivery date set in the AR and the date JANVIER LABS receives the request to cancel the ORDER.

So: For ORDERS of non-mutant RESEARCH MODELS, less than 3 months old, their derived products or by-products, mentioned in the CATALOGUE, the penalty will be:

- 10% when the request is received 28 to 22 days before the delivery date;
- 25% when the request is received 21 to 15 days before the delivery date;
- 50% when the request is received 14 to 8 days before the delivery date;
- 75% when the request is received 7 to 3 days before the delivery date;
- 100% when the request is received less than 3 days before the delivery date.

For ORDERS of non-mutant RESEARCH MODELS aged between 3 and 18 months, their derivatives and by-products mentioned in the CATALOGUE, the penalty will be:

- 10% when the request is received 28 to 22 days before the delivery date;
- 25% when the request is received 21 to 15 days before the delivery date;
- 75% when the request is received 14 to 8 days before the delivery date;
- 100% when the request is received less than 8 days before the delivery date

For ORDERS of RESEARCH MODELS aged 19 months and over, their derived products and by-products, and for all ORDERS of mutant RESEARCH MODELS, their derived products and by-products mentioned in the CATALOGUE, the penalty will be:

- 50% when the request is received more than 30 days before the delivery date;
- 100% when the request is received 30 days or less before the delivery date.

For other ORDERS of RESEARCH MODELS, their derived products and by-products not mentioned or whose features are not provided for in the CATALOGUE, the penalty will be 100%, i.e. the total amount of the ORDER excluding VAT, regardless of the period of notice.

5 - SHIPPING

5.1 Backup

Prior to the transfer of the BIOLOGICAL MATERIAL, the CUSTOMER must make a backup of the corresponding strain, (i) until JANVIER LABS confirms the completion of the ordered SERVICE, or (ii) until the first cohort of animals from the contract breeding service is delivered.

5.2 Removal of BIOLOGICAL MATERIAL

The CUSTOMER is responsible for the preparation of the BIOLOGICAL MATERIAL, its packaging, wrapping and labelling of the packages, in accordance with the regulations applicable in all transit countries.

The Customer must provide all the information and documents required by JANVIER LABS or the carrier, within a maximum period of 5 working days prior to collection of the BIOLOGICAL MATERIAL. This obligation applies, inter alia, to the authorisations required under current GMO regulations.

5.3 Transfer of risk

Unless otherwise provided for in the AR, the transfer of risks on the PRODUCTS and/or RESULTS takes place in accordance with FCA Incoterm ICC 2021. Similarly, unless otherwise stipulated on the AR, or in the absence of details on this AR, the transfer of risks on the BIOLOGICAL MATERIAL sent to JANVIER LABS takes place in accordance with DDP Incoterm ICC 2021.

6 - DELIVERY - ACCEPTANCE

6.1 Contractual deadlines are set out in the AR.

Delays in the delivery of PRODUCTS and/or RESULTS, or in the performance of SERVICES, shall not be grounds for cancellation or rescission of the ORDER.

6.2 Upon receipt of the PRODUCTS and/or RESULTS, the CUSTOMER shall check their apparent conformity and shall state any caveats on the delivery note. These caveats must be made and confirmed in writing within 3 calendar days of receipt, both to and JANVIER LABS, in accordance with the provisions of article L 133-3 of the French Commercial Code concerning damage and loss in transit, and with the wishes expressed here by the Parties in the case of apparent non-conformity. Otherwise, after this period, the PRODUCTS and/or RESULTS are deemed to be compliant and approved for good without caveats by the CUSTOMER.

6.3 In the event of a latent defect in the PRODUCTS and/or RESULTS delivered, hidden upon receipt, and which is revealed within a maximum period of 14 weeks from the date of dispatch, the CUSTOMER must submit their complaint without delay. After expiry of this 14-weeks guarantee period, no claim against JANVIER LABS for latent defects will be admissible.

6.4 Allegations of non-conformity or latent defect will only be dealt with by JANVIER LABS if they are made in writing, including by e-mail, within the time limits and in the form specified above. It is the CUSTOMER's responsibility to provide, when making a claim, all evidence of the reality of the alleged defects or non-conformity.

6.5 The CUSTOMER must allow JANVIER LAB to carry out the appropriate checks it deems necessary, including visits to the CUSTOMER's site, with experts from JANVIER LABS.

6.6 For health reasons, no RESEARCH MODELS, their derived products or by-products and/or RESULTS may be returned without the prior agreement of JANVIER LABS. If a return is agreed, only the carrier chosen by JANVIER LABS is authorised to carry it out. JANVIER LABS will only cover return costs if the duly declared anomaly has actually been observed by JANVIER LABS or its authorised representative, and if JANVIER LABS is responsible for the anomaly.

6.7 In any event, if an anomaly is detected, the CUSTOMER must immediately take all necessary measures to prevent the aggravation and/or spread of this anomaly and the associated damage.

6.8 The complaint shall not suspend the CUSTOMER's obligation to pay for the ORDERS concerned, without prejudice to the price reduction clause provided for in section 17.3 below.

GENERAL TERMS AND CONDITIONS OF SALE

7 - PRICES

7.1 The price of the PRODUCTS is determined on the basis of the current price list. The price of an offer is valid only during the period of validity of that offer or quote.

7.2 Prices are per unit and defined for an agreed period and/or volume and/or capacity.

7.3 Unless otherwise agreed in writing by JANVIER LABS, prices are net and without discount, EX WORKS Incoterm CCI 2021 and excluding packaging, which is invoiced in addition on the basis of the CATALOGUE price. Prices do not include, in particular and without limitation, (i) transport, (ii) customs duties, (iii) any taxes, (iv) insurance, which shall be borne by the CUSTOMER.

The taxes and duties due are calculated on the day the ORDERS are invoiced, in accordance with the laws in force at that time. Any changes in tax rates will be fully reflected in the price. Any duty, tax or deduction deducted from the payment of the price by the CUSTOMER shall remain payable by the CUSTOMER. The CUSTOMER must then complete payment of the price so that JANVIER LABS actually receives the agreed net price.

7.4 Rates are revised annually, with effect from 1st January. Unless otherwise provided for by the AR, renewed or extended SERVICES are subject to annual price revision.

7.5 Unless expressly extended in the AR, the SERVICE is renewed tacitly for an indefinite period, unless one of the Parties has notified its intention not to renew the SERVICE, by sending a registered letter with acknowledgement of receipt, to be received at least 1 month before the end of the initial period. Once renewed or extended, the SERVICES ORDER may be terminated at any time, in the same form and within the same timeframe, with the consequences set out in section 4.3.a/ and sub-section 11.2.4 of the GTCS5

8 - PAYMENT TERMS

8.1 Unless otherwise provided for in the AR or expressly agreed in writing and separately accepted by JANVIER LABS, the price is payable in Euros, by bank transfer, to the direct debit indicated by JANVIER LABS.

8.2 Invoices are payable 30 days end of month from the date of issue. No discount will be granted by JANVIER LABS for cash payment or payment made before the invoice due date.

8.3 A deposit may be requested on any sale of PRODUCTS. For SERVICES, the deposit is 50% (unless otherwise stated on the AR). Transport and repatriation costs will be invoiced on receipt of the BIOLOGICAL MATERIAL at JANVIER LABS premises. The deposit must be paid in cash, on receipt of the invoice, in the form specified in section 8.1 above.

8.4 The payment terms granted by JANVIER LABS to the CUSTOMER depend on the CUSTOMER's solvency, payment profile or country risk. JANVIER LABS may ask the CUSTOMER at any time, including during the fulfilment of an ORDER, to provide it with its accounts, in particular its profit and loss accounts, even provisional ones.

Similarly, if JANVIER LABS has reason to fear payment difficulties (first order, deterioration of the CUSTOMER account, loss or reduction of guarantee, etc.) JANVIER LABS may make the acceptance or continued fulfilment of the current and/or future ORDER(s) subject to the following conditions, depending on its choice: (i) payment of a partial or total deposit, (ii) provision of a sufficient bank guarantee or (iii) cash payment.

If the CUSTOMER refuses to provide the requested documents or does not comply with the terms of payment for the ORDER(S), JANVIER LABS may suspend the fulfilment of the ORDERS in progress, and refuse to deliver or execute the PRODUCTS concerned, without the CUSTOMER being able to argue an unjustified refusal to sell or claim any compensation whatsoever.

8.5 Except with the prior written agreement of JANVIER LABS, and provided that the reciprocal claims and debts are certain, liquid and due, no offsetting is possible between any penalties payable by JANVIER LABS on the one hand, and the sums owed by the CUSTOMER to JANVIER LABS on the other.

8.6 Any invoice must be disputed in writing within 10 working days of receipt, failing which it will be time-barred; and any action arising from an invoice dispute thus duly made will be time-barred 6 months after the due date of the disputed invoice.

8.7 Any delay in payment will automatically result in JANVIER LABS being liable for:

a) Interest on arrears at the interest rate applied by the European Central Bank to its most recent refinancing operation (on 1 January for the 1st half of the year, on 1 July for the 2nd half of the year), plus 10 points, and calculated on the sums due, per day of delay recorded, from the 1st day of delay, until payment in full. Payment is deemed to have been made on the day on which all sums due are credited to the JANVIER LABS account.

b) Payment of a fixed indemnity of €50 per unpaid invoice, in respect of recovery costs, without prejudice to JANVIER LABS' right to request additional compensation, in view of the recovery costs actually incurred.

These penalties will be automatically debited from the CUSTOMER's account.

8.8 Finally, in the event of non-payment of an invoice on its due date, and without prejudice to the termination clause set out below and its consequences, JANVIER LABS may (i) cancel all invoices issued, (ii) suspend the execution of any ORDER in progress, and/or (iii) demand cash payment; after sending a formal notice that has gone unheeded for 8 working days after its receipt; and in any event, refuse any new order from the CUSTOMER; all without the CUSTOMER being able to claim an unjustified refusal to sell, or claim any compensation whatsoever.

9 - COMPLIANCE - WARRANTY

9.1 Subject to the CUSTOMER having complied with the prerequisites referred to in section 3.2, JANVIER LABS guarantees that it has the necessary administrative authorisations to carry out its activities and perform the SERVICES.

9.2 JANVIER LABS guarantees that its PRODUCTS comply with the AR, as part of its obligation of means. It also benefits from the customary tolerances in its field. To assert their rights, the CUSTOMER must inform JANVIER LABS, in the form and within the deadlines set out in article 6 above, on pain of forfeiture of any action relating thereto.

9.3 JANVIER LABS conducts regular health checks, the details and results of which are available on its website or on request. It undertakes to provide the information strictly necessary for the proper fulfilment and monitoring of ORDERS. Upon delivery of the RESEARCH MODELS and/or RESULTS, JANVIER LABS issues a health certificate corresponding to the SPF or SOPF status defined by JANVIER LABS and chosen by the CUSTOMER when the ORDER was placed.

In any event, the issue of the health certificate does not exempt the CUSTOMER from applying its own biosafety rules and ensuring its own health programme with regard to PRODUCTS or RESULTS.

9.4 For its part, the CUSTOMER is responsible for ensuring that its activities, BIOLOGICAL MATERIAL and research protocols comply with the law and applicable standards, including

ethical standards. They are solely responsible for the use he makes of the PRODUCTS and RESULTS and its consequences, as well as for any damage, costs or liabilities that they, their employees, affiliates, agents, subcontractors or any other third party suffer or incur as a result of the use, storage, transfer or disposal of the PRODUCTS and RESULTS.

The CUSTOMER will indemnify and hold JANVIER LABS and its employees, affiliates, servants and sub-contractors harmless from any liability, damages, costs or related expenses (including legal costs and lawyers' fees) incurred as a result of the BIOLOGICAL MATERIAL, its use to perform the ordered SERVICE, its storage, transfer or disposal, unless it can be shown that JANVIER LABS was at fault or grossly negligent as the sole cause of the damage claimed.

9.5 To render the SERVICES ordered, JANVIER LABS alone decides on the care and criteria for use of the BIOLOGICAL MATERIAL with regard to AAALAC. It retains the possibility of killing animals in pain, which are part of the BIOLOGICAL MATERIAL or RESULTS, according to a pain scale predefined with the JANVIER LABS internal Ethics Committee. This pain grid is provided to the CUSTOMER on request.

9.6 The weight and/or age of the RESEARCH MODELS and RESULTS indicated on the delivery notes is that which they have at the time they are packaged for dispatch to JANVIER LABS premises.

9.7 Concerning pregnant females:

a) JANVIER LABS guarantees gestation under conditions specific to each strain of RESEARCH MODELS presented in the CATALOGUE,

b) JANVIER LABS does not guarantee the number of animals per litter or the exact date of birth,

c) JANVIER LABS does not guarantee against the risk of interruption of gestation during transport if the gestation period is either less than 5 days (at the time of packaging for delivery) or more than 2/3 of the gestation period for the strain concerned.

10 - OWNERSHIP

10.1 The CUSTOMER declares that it has the necessary rights and titles to entrust the BIOLOGICAL MATERIAL to JANVIER LABS, in order to carry out the SERVICES ordered.

10.2 JANVIER LABS acquires no rights to the BIOLOGICAL MATERIAL or to the RESULTS, which are in particular the descendants and derivatives of the BIOLOGICAL MATERIAL entrusted to it.

10.3 The murine strains described in the CATALOGUE remain the property and/or are under the exclusive control of JANVIER LABS, which retains all intellectual property rights relating to the PRODUCTS, photos and technical documentation. These may not be communicated, published, assigned, copied, reproduced, modified, translated or transferred without the prior written authorisation of JANVIER LABS.

10.4 Similarly, any method, protocol, know-how, material (including biological), data, technique, technology, licence, etc. implemented during the performance of the SERVICES, and developed by JANVIER LABS or by a third party prior to the performance of the SERVICES or at the time of their performance, are and remain the exclusive property of JANVIER LABS or of this third party.

Any information, document, data or protocol provided by JANVIER LABS to the CUSTOMER that is not a RESULT (the "INFORMATION") belongs to and/or remains under the control of JANVIER LABS.

11 - USE OF RESEARCH MODELS AND BIOLOGICAL MATERIALS

11.1 Use of RESEARCH MODELS

11.1.1 The CUSTOMER shall have the right to use the RESEARCH MODELS, their derivatives and by-products after full payment of the related invoices, and solely for use in accordance with the provisions of the sections of this article.

11.1.2 The CUSTOMER undertakes to use the RESEARCH MODELS exclusively for its internal research carried out under its authority. It undertakes not to transfer by any means and in particular not to sell, assign, hire out, give or lend the RESEARCH MODELS, their derivatives and by-products to third parties, including its affiliates or subcontractors. It undertakes not to reproduce, copy, determine or analyse the PRODUCTS, whether from a chemical, biological or physical point of view, nor to conduct any reverse engineering or modification whatsoever on the RESEARCH MODELS, their derivatives and by-products.

11.1.3 Any transfer of RESEARCH MODELS, their derived products and by-products must be previously authorised in writing by JANVIER LABS. In particular, this agreement will be conditional, without this list of conditions being exhaustive, on (i) the transfer being made without consideration; (ii) the RESEARCH MODELS, their derivatives and by-products being used exclusively for a specifically identified research project conducted under the authority of the CUSTOMER; and (iii) the rules of the MGI nomenclature being complied with.

11.2 Use of BIOLOGICAL MATERIAL and RESULTS

11.2.1 The transfer of ownership of the RESULTS will be effective once the SERVICES have been paid for in full; and the CUSTOMER will be able to use the INFORMATION sent by JANVIER LABS, for its own internal requirements linked to the use of the RESULTS, within the limits set out in sections 10.3, 10.4 and article 15 of the GTCS5, without any other possibility of exploiting this INFORMATION separately, reproducing, copying, modifying or translating it, in particular for the purposes of representation, transfer, marketing or publication.

11.2.2 The BIOLOGICAL MATERIAL and its derivatives shall only be raised, used or kept by JANVIER LABS to render the SERVICE ordered. All reports, data or evidence of services rendered will be retained by JANVIER LABS for only 1 year after the last report (the "Final Report") relating to that SERVICE is sent, or for any other retention period required by law. At the end of this legal period, these documents will be destroyed unless the CUSTOMER requests otherwise in writing, no later than upon receipt of the Final Report. Any request by the CUSTOMER to retain the goods for a longer period must be justified and will give rise to an invoice.

11.2.3 Upon completion of the SERVICES and delivery (if applicable) of the Final Report, the CUSTOMER shall decide whether to destroy or return the remaining BIOLOGICAL MATERIAL and/or its derivatives and descendants (the "MATERIAL"). The return of the MATERIAL to the CUSTOMER or any other third party expressly designated by the CUSTOMER will be at the CUSTOMER's expense, risk and peril, which the CUSTOMER accepts and acknowledges unreservedly.

11.2.4 If the CUSTOMER fails to give instructions, at the latest within 15 working days following the last delivery of the RESULTS and/or the Final Report, the MATERIAL will be destroyed, without any indemnity or compensation due by JANVIER LABS.

The same will apply if during the provision of a SERVICE, including during the renewal period provided for in section 7.5 above, an invoice remains unpaid on its due date, despite a reminder sent by JANVIER LABS to the last known address provided by the CUSTOMER, as stated in section 17.4 of the GTCS5.

GENERAL TERMS AND CONDITIONS OF SALE

11.3 The CUSTOMER undertakes not to transfer the JAXTM Sperm Cryo Kit acquired from JANVIER LABS outside the territory of the licence held by JANVIER LABS: France, Austria, Belgium, Czech Republic, Germany, Hungary, Italy, Netherlands, Poland, Slovakia, Spain, Switzerland, Denmark, Finland, Norway, Sweden, UK.

JANVIER LABS gives no guarantee on JAXtm brand products, including the sperm cryopreservation kit.

12 - LIABILITY

12.1 The warranty on PRODUCTS is limited to the replacement or reimbursement of PRODUCTS that do not conform or are defective.

12.2 JANVIER LABS' liability, whatever the nature and form of the action, is limited to direct and certain material damage, up to the amount of the disputed ORDER only.

Consequently, and without this list being limitative, immaterial damage, operating losses, loss of turnover and/or loss of opportunity suffered by the CUSTOMER are expressly excluded from any compensation from JANVIER LABS.

12.3 JANVIER LABS is not responsible for decisions made by the CUSTOMER or by a third party on behalf of the CUSTOMER, in particular with regard to the CUSTOMER's choice of PRODUCTS ordered. It is up to the CUSTOMER and the CUSTOMER alone, as a professional, to judge the suitability of the PRODUCTS they have chosen for their research objectives and needs.

13 - FORCE MAJEURE

13.1 JANVIER LABS cannot be held responsible for the non or partial fulfilment of any of its obligations, due to a case of force majeure.

13.2 The following in particular constitute cases of force majeure: any difficulty in production or delivery due to bad weather, acts of war, lock-out, total or partial external or internal strike or other labour disputes, acts of terrorism, decisions by a legal authority, fire, flood, riot, pandemic, war, explosion or other serious disruption to the production or operation of JANVIER LABS, computer breakdowns, changes in standards or regulations, particularly in countries where PRODUCTS or RESULTS are delivered or produced, import or export bans, interruptions or slowdowns in supplies or transport, whether these events directly or indirectly affect JANVIER LABS, its suppliers or carriers; as well as any event beyond the control of JANVIER LABS, affecting the performance of its obligations.

13.3 Performance of the obligation is suspended for the duration of the force majeure event. As soon as the cause of this suspension disappears, JANVIER LABS will make its best efforts to resume normal performance of its contractual obligations as quickly as possible. If the impediment is permanent or exceeds 1 month, the ORDER may be cancelled 8 working days after receipt of a registered letter with acknowledgement of receipt or any extrajudicial document stating the intention to cancel the sale.

13.4 The suspension of obligations or the cancellation of the ORDER in the event of force majeure shall under no circumstances be a cause of liability for non-performance of the obligation in question, nor lead to the payment of damages or late penalties. During the suspension, each of the Parties retains responsibility for its own costs arising from the situation.

14 - INSURANCE

Each of the Parties undertakes to take out professional indemnity insurance with a solvent insurance company.

15 - CONFIDENTIALITY - PROTECTION OF PERSONAL DATA

15.1 Privacy

15.1.1 Any INFORMATION sent by JANVIER LABS to the CUSTOMER, as part of the formation or fulfilment of the ORDER, is considered confidential. Any communication of these documents to a third party must first be authorised by JANVIER LABS.

15.1.2 This confidentiality will not apply to (i) information that was already publicly available prior to its communication, or (ii) information lawfully received from a third party, or (iii) information that was already in the CUSTOMER's possession prior to the ORDER, or (iv) information whose disclosure is imposed by law or an enforceable judicial decision.

15.1.3 This obligation applies during the fulfilment of the ORDER and for 5 years following its delivery.

15.2 Protection of personal data

15.2.1 JANVIER LABS, in its capacity as data controller, may, for the purposes of the ORDER, store, process and use the personal data of individuals working on behalf of the CUSTOMER (the "Data"). The data collected via the ORDERS placed are necessary for the management of the ORDER and its fulfilment.

15.2.2 This Data may be disclosed by JANVIER LABS internally, in particular within the sales, technical and administrative teams. It may be used by external service providers that the data controller may call upon, in particular, and without this list being exhaustive, for sending invoices, transport or delivery relating to the ORDER. Data is not transferred outside the European Union.

15.2.3 The Data is kept for the duration of the validity of the JANVIER LABS offer and the ORDER, until the respective obligations of the Parties have been met. They are archived for the length of time required by law to keep commercial documents.

15.2.4 The CUSTOMER, and more specifically the staff concerned, has the right to access, rectify, object to, limit the processing of, delete and port their Data, which they may exercise by sending an e-mail to the following address contact@janvier-labs.com, stating their surname, first name and address and enclosing a copy of both sides of their identity document.

15.2.5 In the event of any difficulty in connection with the management of their Personal Data, the CUSTOMER and the staff concerned may lodge a complaint with the CNIL (COMMISSION NATIONALE de l'INFORMATIQUE et des LIBERTES) or any other competent authority.

15.2.6 The CUSTOMER undertakes to inform all persons acting on its behalf, and in particular its shareholders, representatives, employees and agents, of their rights as set out in this clause.

16 - PUBLICATION

The CUSTOMER authorises JANVIER LABS to cite it as a reference.

17 - TERMINATION

17.1 Notwithstanding the provisions of Article 1221 of the French Civil Code, in the event of a failure by one of the Parties to meet its obligations, the Party which has suffered from such a default shall not be entitled to seek enforcement in kind, except in the case of an obligation

to pay sums due.

17.2 Similarly, notwithstanding the provisions of article 1222 of the French Civil Code, the Party that has suffered the loss may not itself have the obligation performed by a third party, at the expense of the defaulting Party.

17.3 In accordance with Article 1223 of the French Civil Code, the Party that is the victim of the default may notify the defaulting Party of its decision to accept imperfect performance of the obligation, with a proportional reduction in the price, as soon as the formal notice that it has sent (by registered letter with advice of delivery, stating the reasons for the delay) has gone unheeded 15 calendar days after its receipt.

The defaulting Party who intends to accept the price reduction will make its decision known in writing within 1 month. Failing agreement between the Parties, the procedure set out in Article 18 below shall apply.

17.4 In the event of non-payment of the sums owed to it, (in particular in application of the provisions of section 4.3), and without prejudice to its other rights to compensation, JANVIER LABS may proceed, 15 calendar days after formal notice has remained without effect, and without any other formality or notice, to cancel the ORDER concerned at the CUSTOMER's expense, without compensation for the CUSTOMER. JANVIER LABS will keep the amounts already received, including any penalties to be applied to compensation for its loss.

17.5 The provisions of these General Terms and Conditions of Sale set out in articles 9.2, 9.4, 10, 11, 12, 15, 16, 17.5 and 18 shall remain applicable despite the cancellation, annulment or lapse of the ORDER, regardless of the form in which and the reasons for such cancellation, annulment or lapse.

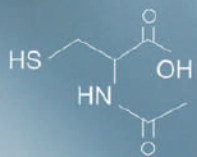
18 - APPLICABLE LAW - JURISDICTION

18.1 Any question relating directly or indirectly to these GTCSS or to a purchase or sale transaction arising therefrom shall be governed by French law, to the exclusion of any international or European treaty or convention, including the 1969 Vienna Convention.

18.2 The GTCSS are written in French. If they are translated into one or more languages, only the French text will be deemed authentic in the event of a dispute.

18.3 In the absence of an amicable settlement, any dispute directly or indirectly related to an ORDER or to the GTCSS shall be submitted EXCLUSIVELY to the COMPETENT COURT (FRANCE), IN THE REGION WHERE JANVIER LABS' REGISTERED OFFICE IS LOCATED, EVEN IN THE EVENT OF MULTIPLE JURISDICTIONS OR IN THE EVENT OF AN APPEAL IN GUARANTEE.

18.4 If any provision of these GTCSS is declared unwritten and/or invalid by a Court or any other authority, such a decision shall in no way affect the validity of the other provisions of these GTCSS. The Parties shall endeavour to reach agreement on the terms of an equitable clause or part of a clause which may replace that which has thus been declared null and void.



JANVIER
LABS

Route des chênes secs
53941 Le Genest Saint Isle
FRANCE

T. +33 (0)2 43 02 11 91
contact@janvier-labs.com

www.janvier-labs.com

PULSE #2