

CENTRAL EUROPE



## > PRICES 2022

Prices valid from 01/01/2022



## **CONTACT :**

### **JANVIER LABS**

Research models and associated services

Route des chênes secs  
53941 Le Genest Saint Isle  
FRANCE

T. +33 (0)2 43 02 11 91

F. +33 (0)2 43 02 00 15

Sales support : [contact@janvier-labs.com](mailto:contact@janvier-labs.com)

Scientific support : [scientificsupport@janvier-labs.com](mailto:scientificsupport@janvier-labs.com)



JANVIER LABS takes care of your models so you can devote yourself fully to your research projects!

Thanks to its unique site, the largest and most modern in Europe, JANVIER LABS provides you with experimental models of the highest level of quality.

We assure you of rigorous breeding conditions essential for uniformity and reproducibility of your experimental results: health status (SPF and SOPF), genetic stability, microbiota and animal welfare.

With more than 60 years dedicated to breeding and developing research models, JANVIER LABS ensures availability, responsiveness, and excellence, as well as transparency on the quality of its models, products and services.

In addition to our 360 ° range of immunodeficient models, in particular the NXG mouse and its humanized counterpart the NXG-HIS, you will also be able to discover our range of metabolic models. These are ideal for all projects dedicated to the study of obesity and metabolic disorders, such as NAFLD, diabetes, diabetic nephropathies ...

With JANVIER LABS, you benefit from a complete support which extends from the creation of your new models, their characterization by our experts and the breeding of preclinical cohorts, the preparation of your models in the laboratory, until their delivery by our dedicated carriers.

Throughout the year, you will discover the benefits of JANVIER LABS Innovation through our new models and services, which will complement our offer to best meet your needs.

Thomas Janvier  
General Director



# INDEX

## THE PARTNER YOU CAN RELY ON

- 6 • The largest and most advanced rodent breeding site in Europe
- 7 • A rigorous health policy, a constant concern for animal welfare, a unique and stable microbiota, a genetic management concept
- 8 • Research models
  - Weight of the animals during preparation and during transport
  - Strain characteristics
- 9 • Health status
  - Transport of pregnant females and unweaned litters



## FIND YOUR RESEARCH MODEL

### IMMUNODEFICIENTS MODELS

- 10 • NXG mouse **New!**
- 10 • B6 $\gamma$ c mouse
- 11 • B6R2 $\gamma$ c mouse **New!**
- 11 • NOD-Scid mouse
- 11 • B6Rag2 mouse **New!**
- 11 • CB17-Scid mouse
- 12 • BALB/c Nude mouse
- 12 • ATHYMIC Nude mouse
- 12 • NMRI Nude mouse
- 12 • LOU Nude rat
- 12 • ATHYMIC Nude rat
- 12 • FISCHER Nude rat

### HUMANISED MODELS

- 13 • NXG-HIS mouse **New!**

### METABOLIC MODELS

- 14 • BKS Diabetic mouse (db/db)
- 14 • BKS Diabetic mouse Control
- 14 • B6 Obese mouse (ob/ob)
- 14 • B6 Obese mouse Control
- 14 • B6 DIO mouse

### AGED MODELS

- 15 • C57BL/6JRj aged
- 15 • WISTAR aged

### INBRED MICE

- 16 • C57BL/6JRj mouse
- 16 • C57BL/6NRj mouse
- 16 • DBA/1 mouse
- 16 • DBA/2 mouse
- 17 • BALB/cByJRj mouse
- 17 • BALB/cAnNRj mouse
- 17 • BALB/cJRj mouse
- 17 • C3H mouse
- 18 • CBA mouse
- 18 • FVB mouse
- 18 • SJL mouse
- 18 • 129S2/Sv mouse

### OUTBRED MICE

- 19 • SWISS mouse
- 19 • NMRI mouse

### GENETICALLY MODIFIED MICE

- 19 • BIOZZI Asthmatic (BP2) mouse

### COISOGENIC MICE

- 20 • B6 Agouti mouse
- 20 • B6 Albinos mouse

### HYBRID MICE

- 21 • B6D2F1 mouse
- 21 • B6CBAF1 mouse
- 21 • B6SJLF1 mouse
- 21 • CSJLF1 mouse
- 21 • C3D2F1 mouse

## INBRED RATS

- 22 • DARK AGOUTI rat
- 22 • LEWIS rat
- 22 • FISCHER (F344) rat
- 22 • BROWN NORWAY rat

## OUTBRED RATS

- 23 • WISTAR rat
- 23 • SPRAGUE DAWLEY rat
- 23 • LONG EVANS rat

## GENETICALLY MODIFIED RATS

- 24 • WISTAR KYOTO rat
- 24 • SHR rat
- 24 • LUND METS rat

## CRYOPRESERVED RATS

- 25 • BLACK HOODED (PVG) rat
- 25 • FAWN HOODED rat
- 25 • SPRAGUE DAWLEY Hairless rat
- 25 • LOU Nude rat
- 25 • FISCHER Nude rat

## OTHER RODENTS

- 25 • Goldhamster
- 25 • Gerbille

## ASSOCIATED SERVICES



### CUSTOMISE YOUR MODEL

- 26 • Customised models
- 26 • Embryo kits



### BREED AND SECURE YOUR MODEL

- 27 • Jax Sperm Cryo Kit
- 28 • Cryopreservation
- 28 • Assisted reproduction
- 29 • Customised breeding
- 29 • Genotyping
- 29 • Speed Congenics



### PREPARE YOUR MODEL

- 30 • Biological products
- 31 • Surgery
- 31 • Experimental protocols



### DELIVER / REPATRIATE YOUR MODEL

- 32 • An in-house transport service
- 32 • Packaging adapted to animal's health status
- 33 • Stress management for animal transportation
- 33 • Weekly deliveries



# PASSION FOR BREEDING AND COMMITMENT TO RESEARCH FOR MORE THAN 60 YEARS

FOUNDED IN 1960 BY ROGER JANVIER, THE COMPANY HAS BECOME INTERNATIONAL AND REMAINS LOYAL TO THE VALUES OF ITS FOUNDER.

- ✂ **Seeking excellence**, going ever further for the quality of our rodents, products and services
- ✂ **Ensuring customer satisfaction** through flexibility, responsiveness and proximity of our teams
- ✂ **Innovating** by anticipating the needs of our customers
- ✂ **Engaging with researchers** to improve tomorrow's health

Up to now, more than **3,000** public and private **laboratories** trust us in **more than 20 countries**.



THE LARGEST AND MOST  
ADVANCED RODENT BREEDING SITE IN EUROPE



## INNOVATION & CONTINUOUS IMPROVEMENT

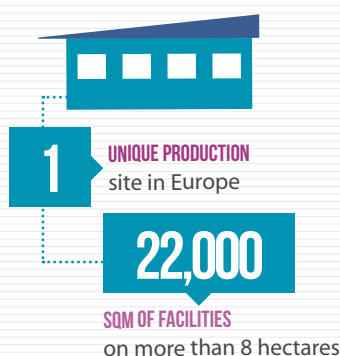
- > Millions of Euros reinvested each year in our production site
- > Ongoing development of new advanced technologies



## CONTINUITY OF SUPPLY

We breed each strain in different production units in order to ensure their availability

## KEY FIGURES



Breeding capacity

**3,000,000**

RODENTS A YEAR



**45,000**

KM A WEEK TRAVELLED by our integrated transport department

**3,000**

CUSTOMERS on the 5 continents



**300**

INTERNATIONAL employees





## INTERNATIONAL PLAYER IN BIOMEDICAL RESEARCH

With the support of our teams of experts and our unique site in Europe, at the forefront of innovation and entirely dedicated to rodent breeding, we assure you of strict breeding conditions around 4 fundamental elements:



Highest standards for health quality



Animal welfare



Unique and stable microbiota



Genetic stability



### HIGHEST STANDARDS FOR HEALTH QUALITY

Led by a team of experts, our strict health policy provides the human, organisational and technical means necessary to ensure the highest health standards (SPF and SOPF).

- Transparency of health monitoring tests
- Independent laboratories
- Frequency of health monitoring tests beyond FELASA recommendations



### ANIMAL WELFARE

We ensure the highest welfare of our rodents. At JANVIER LABS, animal welfare is a commitment, a value that fuels our passion as breeders.

- All our teams are regularly trained and permanently aware of animal welfare.
- We assure calm, docile and easy-to-handle animals. Animals handled several times a week
- Control of environmental parameters
- No mixture of species, for a calm environment which allows the expression of natural behaviour
- A department dedicated to continuous improvement of animal welfare and to the application of the 3Rs
- An independent ethics committee



### A UNIQUE AND STABLE MICROBIOTA

All our models have the same microbiota which is studied, monitored and stable over time.

- Standardised breeding procedures on a unique site
- Regular controls of the microbiota by experts
- Consistency and homogeneity of environmental factors

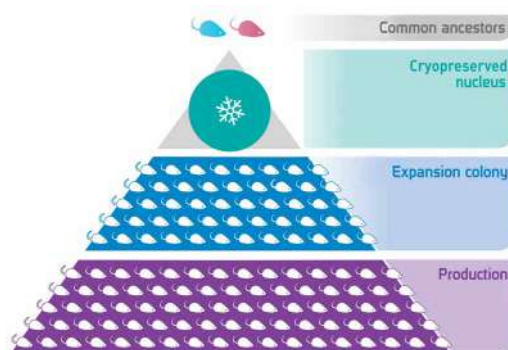
## The genetics reliability of research models is one of the essential conditions for the success of research programmes

In order to provide researchers with research models with a high quality genetic, JANVIER LABS has developed a genetic management policy by putting in place essential rules for the genetics management of its models. This policy is based on modern breeding management tools such as: cryopreservation and embryo revitalization.

The JANVIER LABS GENETIC POLICY® allows us to ensure the genetic homogeneity of our strains delivered to the end user by performing rigorous genetic management at three levels (nucleus in cryopreserved embryo form, expansion colony and production colony). It protects our models from genetic drift.

The integration of modern techniques such as cryopreservation and revitalisation of embryos allows us to freeze our nucleus. Thus we slow down the evolution of the model, which increases by one generation every 25 to 50 years, instead of 2 generations per year.

JANVIER LABS can thus guarantee the genetic stability of all its models over time.



# OUR RESEARCH MODELS

15 of the top 20 pharmaceutical and biotech companies and leading international research institutes have chosen JANVIER LABS as a unique partner for their research projects.

Aware that our models are an asset for biomedical research, and to prepare for tomorrow's challenges, JANVIER LABS has created key partnerships with renowned experts (Ciphe, Centre d'Immunophénomique, France) to develop new innovative humanised and transgenic models using emerging technologies for genome editing (CRISPR/Cas9) and characterisation, notably by immunophenotyping. These approaches serve to continuously improve the predictive and translational value of rodent models.

Choosing JANVIER LABS as your partner can significantly expand, strengthen and accelerate your research and development programmes, by accessing experts who have successfully generated thousands of animals at an unprecedented success rate.

## CONCERNING THE WEIGHT OF THE ANIMALS DURING PREPARATION AND DURING TRANSPORT:

### Weight of animals for shipment:

#### Weight of animals sold at age

If you specify a minimum weight and a maximum weight:  
- When the requested difference is less than 4 g for mice or 30 g for rats, hamsters or gerbils, the price will then be increased by 6%.

### Transient weight loss during transport:

Not all individuals react in the same way during transport due to the nature of their sensitivity or dominance behaviours for access to food and gel. **These factors can impact the weight of the animals during transport.** Some individuals can lose up to 10% of their formula weight.

**In general, these animals regain their initial weight within a few days of delivery, depending on their housing conditions and their hierarchical position in the group.**

**An ex-breeder** is an animal originating from uncoupled animals at the end of the cycle.

**A reformed animal** is an animal which is sold without age or weight criteria, subject to availability.

**Gerontobiology:** for the ageing of inbred or outbred old breeders, please contact us.

## STRAIN CHARACTERISTICS:

Certain strains have physiological and behavioural characteristics which are specific to them and which must be taken into account when ordering models. The FAQ on our website helps you find out more about this: <https://www.janvier-labs.com/faq/>.

We are also on hand to provide you with all the information you will need to secure your order.

## HEALTH STATUS:

JANVIER LABS is committed to providing standardized models of the highest genetic quality with SPF or SOPF status.

**To find out the price of animals with SOPF health status, please contact us.**







## TRANSPORT OF PREGNANT FEMALES AND UNWEANED LITTERS:

In order to ensure the well-being of animals and comply with the legislation in force:

**Pregnant females having reached more than 90% of their gestation time are prohibited for transport.** In line with the relevant legislation, JANVIER LABS transport policy allows:

- Mice: pregnant females up to a maximum of 18 days gestation upon delivery
- Rats: pregnant females up to a maximum of 20 days of gestation upon delivery

**The transport of pups under 7 days old is prohibited.**

The exact day of parturition cannot be guaranteed due to the natural variation in the length of gestation. Furthermore, JANVIER LABS cannot guarantee the number of embryos / offspring per litter.

Pregnant females delivered are primiparous. All pregnant females ordered are billed. In order to guarantee the availability of pregnant females, we recommend that you anticipate your requests for scheduled matings.



## YOUR SATISFACTION: OUR PRIORITY

### OUR COMMITMENTS: ADAPTABILITY AND REACTIVITY

- Flexibility in order-taking
- Tailor-made response to each of your requirements
- Personalised accompaniment for your projects
- A scientific follow-up specialised in rodents breeding
- Sales assistance on hand and ready to help
- Local sales representative for your specific needs
- Team of veterinary surgeons and experts to advise you
- An ISO 9001 certified company for all our activities



# OUR IMMUNOLOGY-ONCOLOGY MODELS

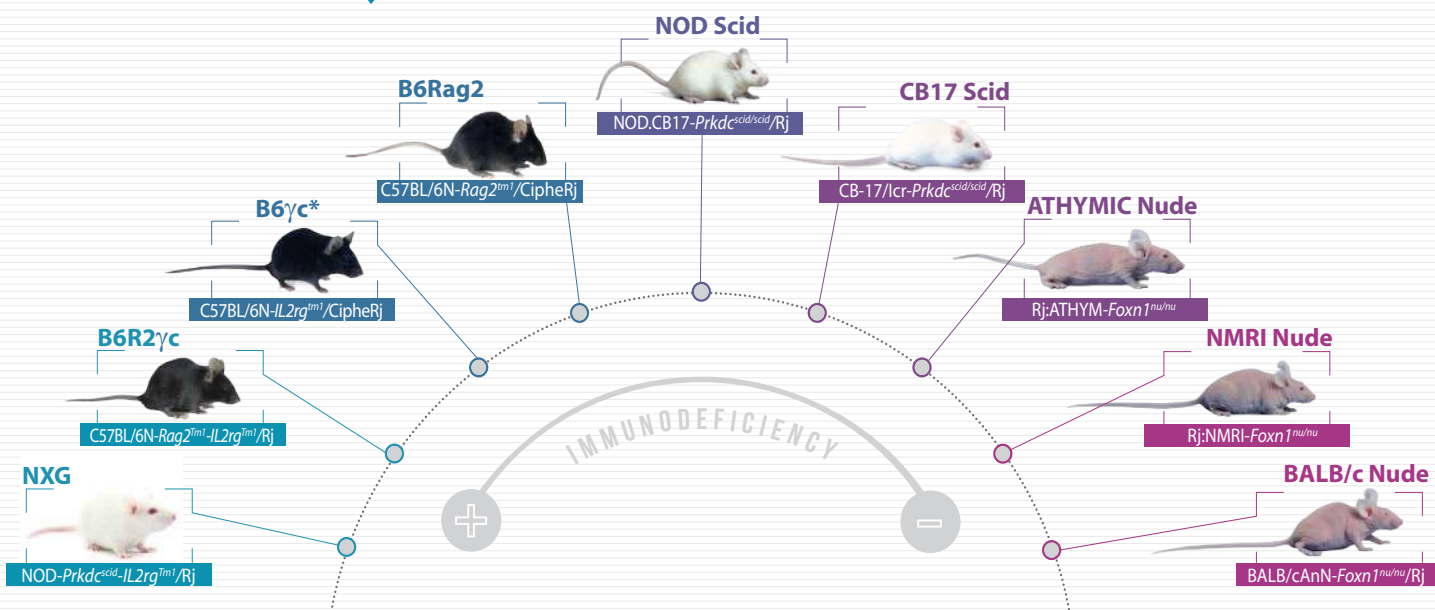
## ADDED VALUE FOR YOUR RESEARCH

JANVIER LABS offers a range of immunodeficient models that are entirely characterized to support you during your research programmes.

JANVIER LABS research models show different immunodeficiency levels so that each of your studies benefit from a model with its own immune characteristics. They cover numerous study areas such as:

### IMMUNODEFICIENT MODELS: FIELDS OF APPLICATION

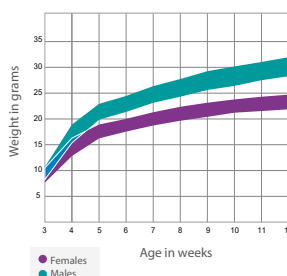
- Infectious diseases
- The understanding of immune system and of its mechanisms
- The development of new vaccines and immunotherapy products
- Tissue grafts including tumors
- The development and the optimization of anti-cancer immunotherapies
- The development of new imaging methods
- The understanding inflammation process



\*Only cryopreserved

### NXG NOD-Prkdc<sup>scid</sup>-IL2rg<sup>tm1</sup>/Rj

NEW



Age in weeks	Price in €	
	MALE	FEMALE
3	153,06	153,06
4	157,38	157,38
5	161,71	161,71
6	166,04	166,04
7	170,36	170,36
8	174,69	174,69
For each extra week, only for females Up to 12 weeks		4,33


# OUR MODELS AT THE HEART OF YOUR OF RESEARCH IN IMMUNO-ONCOLOGY

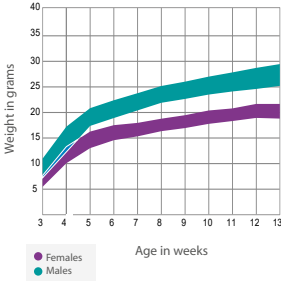
All our technical sheets available on [www.janvier-labs.com](http://www.janvier-labs.com)

## B6R2<sup>γc</sup> C57BL/6N-Rag2<sup>tm1</sup>-Il2rg<sup>tm1</sup>/Rj

NEW

Price in €




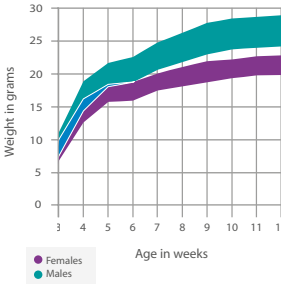


Age in weeks	MALE	FEMALE
3	127,93	127,93
4	132,25	132,25
5	136,58	136,58
6	140,90	140,90
7	145,23	145,23
For each extra week, only for females Up to 12 weeks		4,33

## NOD-Scid NOD.CB17-Prkdc<sup>scid/scid</sup>/Rj

Price in €






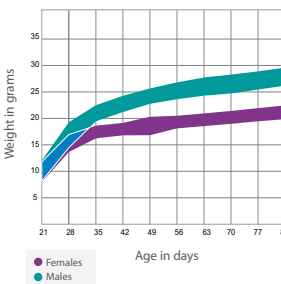
Age in weeks	MALE	FEMALE
3	99,51	99,51
4	99,51	99,51
5	104,34	104,34
6	107,54	107,54
7	110,92	110,92
8	114,80	114,80
For each extra week, only for females Up to 12 weeks		3,59

## B6Rag2 C57BL/6N-Rag2<sup>tm1</sup>/CipheRj

NEW

Price in €




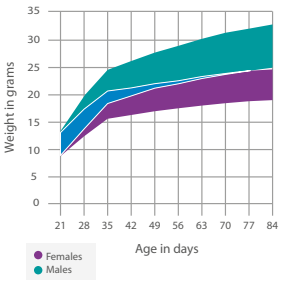


Age in weeks	MALE	FEMALE
3	114,02	114,02
4	118,35	118,35
5	122,67	122,67
6	127,00	127,00
7	131,33	131,33
For each extra week, only for females Up to 12 weeks		4,33

## CB17-Scid CB17/lcr-Prkdc<sup>scid/scid</sup>/Rj

Price in €





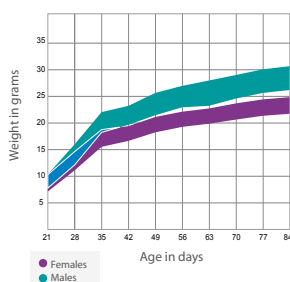
Age in weeks	MALE	FEMALE
3	74,80	74,80
4	74,80	74,80
5	77,04	77,04
6	79,36	79,36
7	82,08	82,08
8	85,64	85,64
For each extra week, only for females Up to 12 weeks		4,43

# OUR IMMUNOLOGY-ONCOLOGY MODELS

All our technical sheets available on [www.janvier-labs.com](http://www.janvier-labs.com)

## BALB/c Nude BALB/cAnN-Foxn1<sup>nu/nu</sup>/Rj

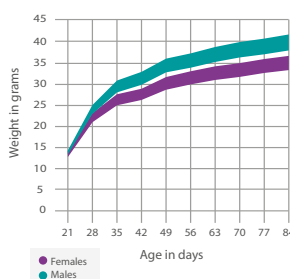
Price in €



Age in weeks	MALE	FEMALE
3	93,09	93,09
4	93,09	93,09
5	96,37	96,37
6	101,71	101,71
7	105,79	105,79
For each extra week, only for females Up to 12 weeks		4,71

## NMRI Nude Rj:NMRI-Foxn1<sup>nu/nu</sup>

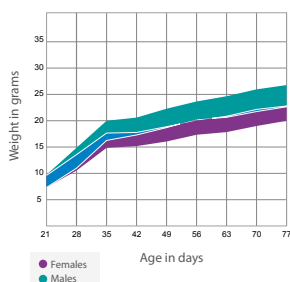
Price in €



Age in weeks	MALE	FEMALE
3	53,45	53,45
4	53,45	53,45
5	60,33	60,33
6	66,30	66,30
7	72,25	72,25
For each extra week, only for females Up to 12 weeks		4,04

## ATHYMIC Nude Rj:ATHYM-Foxn1<sup>nu/nu</sup>

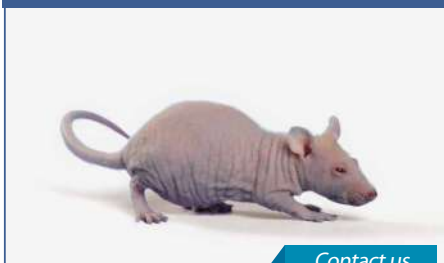
Price in €



Age in weeks	MALE	FEMALE
3	40,66	40,66
4	40,66	40,66
5	45,35	45,35
6	48,49	48,49
7	51,62	51,62
For each extra week, only for females Up to 12 weeks		4,93

## ATHYMIC Nude Rat

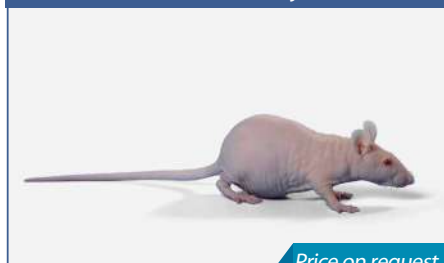
Rj:ATHYM-Foxn1<sup>nu</sup>



Contact us

## FISCHER Nude

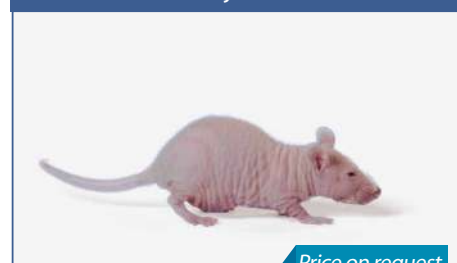
F344/HanZtm-Foxn1<sup>nu</sup>/Rj



Price on request

## LOU Nude

LOU/M-Foxn1<sup>nu</sup>/Rj



Price on request



# OUR HUMANISED MODELS

## MODELS FOR THE DEVELOPMENT OF IMMUNOTHERAPY

### **NXG-HIS : THE REFERENCE MODEL FOR IMMUNOTHERAPEUTICS DEVELOPMENT**

The rise of research to develop treatments in oncology, immunology and infectious diseases is leading to a rapid increase in the demand for humanized mouse models.

JANVIER LABS has developed the NXG-HIS mouse, a strain that completes our range of fully characterized immunodeficient models, providing a predictive preclinical model, **in particular for the evaluation of immunotherapies.**

The NXG-HIS mouse is a mouse model with a human immune system, here by treatment with Busulfan and engraftment of human CD34 cells.

This model is particularly relevant for preclinical studies, especially for the evaluation of a multitude human molecules and innovative therapeutic targets.



### **MAIN APPLICATIONS**

Safety evaluation of drugs and mechanistic studies in the field of:

- Oncology
- Immunology (immunotherapies)
- Infectiology

JANVIER LABS combined its expertise together with the emergence of new technologies to develop new high-value models for scientists involved into target validation and efficacy studies, safety evaluation of new innovative therapies.

NXG-HIS NOD-*Prkdc<sup>scid</sup>*-*IL2rg<sup>Tm1</sup>*/Rj

NEW

Price in €



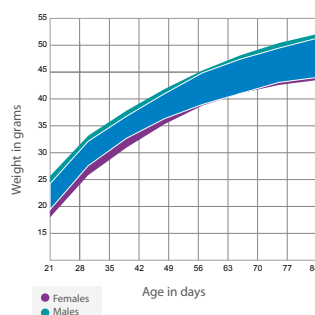
	MALE	FEMALE
Humanized NXG-HIS price	1100	1000

# OUR METABOLIC MODELS

## REFERENCE MODELS FOR THE STUDY OF METABOLIC PATHOLOGIES INCLUDING OBESITY AND DIABETES

### BKS Diabetic mouse BKS (db/db) BKS-*Lep<sup>db/db</sup>*/JOrIRj

Price in €



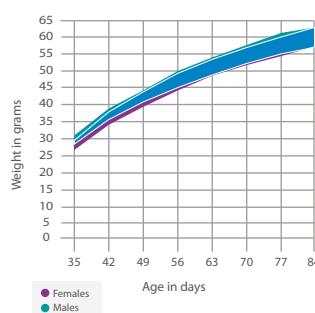
Age in weeks

MALE

5	144,03
6	148,73
7	153,12
8	157,75
For each extra week Up to 12 weeks	8,13
Females	On request

### B6 Obese mouse (ob/ob) B6.V-*Lep<sup>ob/ob</sup>*/JRj

Price in €



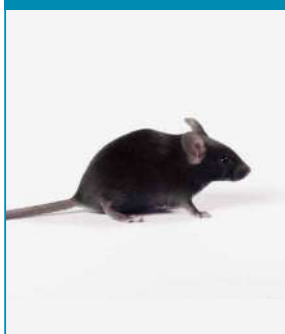
Age in weeks

MALE

4	155,02
5	163,15
6	166,51
7	170,81
8	176,02
For each extra week Up to 12 weeks	8,13

### BKS Diabetic mouse Control BKS-*Lep<sup>db/+</sup>*/JOrIRj

Price in €



Age in weeks	MALE
5	70,79
6	74,89
7	79,07
8	83,40
For each extra week Up to 12 weeks	5,16

### B6 Obese mouse Control B6.V-*Lep<sup>ob/+</sup>*/JRj

Price in €



Age in weeks	MALE
4	82,85
5	87,76
6	91,47
7	95,39
8	99,30
For each extra week Up to 12 weeks	4,91

### B6 DIO mouse C57BL6/JRj



Get instant access to our diet-induced obese (DIO) mouse, fed a 60% high fat diet, the most widely used nutritional model of human obesity associated with hyperinsulinemia and insulin resistance.

The DIO mice also show a moderate hyperglycemia and a strong glucose intolerance.

This human-like nutritional model enables investigating the molecular mechanisms of obesity and evaluating therapeutic strategies:

- obesity
- insulin resistance
- alteration of immuno-metabolism.

Contact us

# AGED ANIMALS

## REFERENCE MODELS FOR THE STUDY OF DEGENERATIVE PATHOLOGIES AND ASSOCIATED THERAPIES

**JANVIER LABS aged C57BL/6JRj male and female mice and aged WISTAR male rats are animals selected at weaning and are only dedicated for ageing.**

The animals are kept for ageing in their original production units and are bred until the age of up to 24 months in a controlled environment and health status.

*Note: Our C57BL/6JRj mice and WISTAR rats have never been used as breeders.*

**In order to evaluate the feasibility of ageing a model, don't hesitate to contact us.**

### In stock

Depending on the characteristics of your request (nature, age and number of animals), we will tell you how long it will take to receive your animals and the "in stock" price will be applied.

### Upon reservation at birth

If you wish to anticipate your order and benefit from a preferential "reservation" price, our 3-month-old animals will be raised to the desired age to meet your needs.

### C57BL/6JRj aged



#### In stock

Age in months	Price in €		Age in months	Price in €		Age in months	Price in €	
	MALE	FEMALE		MALE	FEMALE		MALE	FEMALE
4	51,54	61,85	9	100,57	120,69	14	147,77	177,33
5	63,54	76,25	10	109,40	131,28	15	158,03	189,64
6	75,26	90,31	11	118,23	141,88	16	168,29	Contact us
7	82,91	99,49	12	127,06	152,47	17	178,55	
8	91,74	110,09	13	137,51	165,02	18	188,80	

For females older than 15 months and males older than 18 months, contact us.

#### Upon reservation at birth

Age in months	Price in €		Age in months	Price in €		Age in months	Price in €	
	MALE	FEMALE		MALE	FEMALE		MALE	FEMALE
4	46,23	55,47	9	69,88	83,85	14	91,96	110,35
5	53,06	63,67	10	71,85	86,22	15	106,41	127,70
6	56,85	68,22	11	78,28	93,93	16	117,68	Contact us
7	63,42	76,10	12	81,46	97,75	17	123,99	
8	68,39	82,06	13	86,78	104,14	18	130,21	

For females older than 15 months and males older than 18 months, contact us.

### WISTAR aged RjHan:Wl



#### In stock

Age in months	Price in €		Age in months	Price in €		Age in months	Price in €	
	MALE	FEMALE		MALE	FEMALE		MALE	FEMALE
4	58,68		9	156,91		14	282,05	
5	80,11		10	178,30		15	303,47	
6	97,56		11	201,84		16	366,28	
7	116,14		12	221,21		17	391,10	
8	138,01		13	251,54		18	412,55	

For animals older than 18 months, please contact us.

#### Upon reservation at birth

Age in months	Price in €		Age in months	Price in €		Age in months	Price in €	
	MALE	FEMALE		MALE	FEMALE		MALE	FEMALE
4	52,63		9	113,76		14	183,15	
5	69,81		10	122,20		15	213,23	
6	76,90		11	139,44		16	256,14	
7	92,70		12	147,99		17	271,60	
8	107,35		13	165,65		18	284,52	

For animals older than 18 months, please contact us.

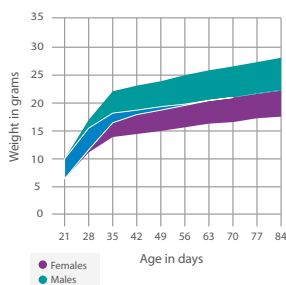


# STANDARD RANGE RESEARCH MODELS

**INBRED**

All our technical sheets available on [www.janvier-labs.com](http://www.janvier-labs.com)

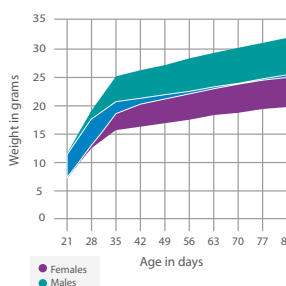
## C57BL/6JRj



Price in €

Age in weeks	MALE	FEMALE
3	14,54	14,54
4	15,62	15,62
5	17,28	17,28
6	18,72	18,72
7	20,35	20,35
8	22,80	22,80
9	25,53	25,53
10	28,26	28,26
11	30,99	30,99
For each extra week Up to 15 weeks	2,73	2,73
Female with litter (5-6 pups)		117,07
Time-mated pregnant female, guaranteed at E15 on delivery date		111,14
Not-guaranteed time-mated pregnant female		71,52
Old breeders	13,24	13,24

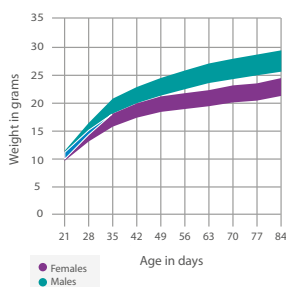
## C57BL/6NRj



Price in €

Age in weeks	MALE	FEMALE
3	12,94	12,94
4	14,17	14,17
5	15,54	15,54
6	16,56	16,56
7	17,53	17,53
8	19,94	19,94
For each extra week Up to 12 weeks	2,62	2,62
Female with litter (5-6 pups)		116,22
Time-mated pregnant female, guaranteed at E15 on delivery date		102,84
Not-guaranteed time-mated pregnant female		65,41
Old breeders	12,94	12,94

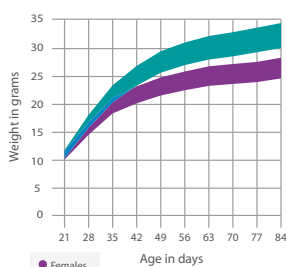
## DBA/1 DBA/1JRj



Price in €

Age in weeks	MALE	FEMALE
3	22,65	22,65
4	26,04	26,04
5	29,44	29,44
6	32,49	32,49
7	35,99	35,99
8	39,52	39,52
For each extra week Up to 12 weeks	3,57	3,57
Female with litter (5-6 pups)		155,32
Time-mated pregnant female		Contact us
Old breeders	19,36	19,36

## DBA/2 DBA/2JRj



Price in €

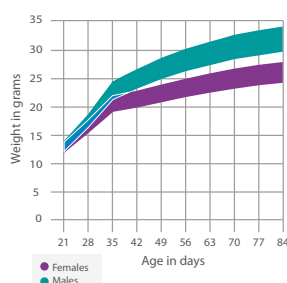
Age in weeks	MALE	FEMALE
3	17,42	17,42
4	18,29	18,29
5	20,49	20,49
6	21,81	21,81
7	22,79	22,79
8	23,68	23,68
For each extra week Up to 12 weeks	2,39	2,39
Female with litter (5-6 pups)		112,67
Time-mated pregnant female		Contact us
Old breeders	15,24	15,24



## INBRED

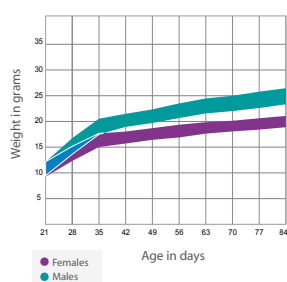
All our technical sheets available on [www.janvier-labs.com](http://www.janvier-labs.com)

### BALB/cByJRj



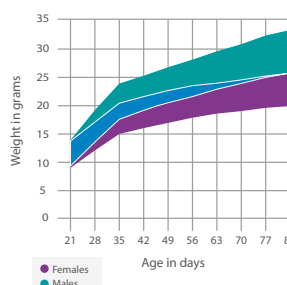
Age in weeks	MALE	FEMALE
3	14,40	14,40
4	14,68	14,68
5	16,05	16,05
6	17,31	17,31
7	19,69	19,69
8	22,10	22,10
For each extra week Up to 12 weeks	2,64	2,64
Female with litter (5-6 pups)		215,54
Time-mated pregnant female, guaranteed at E15 on delivery date		129,59
Not-guaranteed time-mated pregnant female		78,31
Old breeders	12,24	12,24

### BALB/cAnNRj



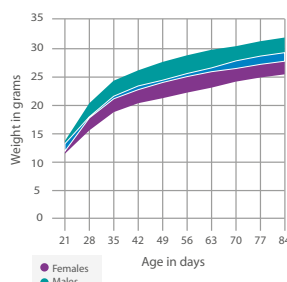
Age in weeks	MALE	FEMALE
3	12,86	12,86
4	13,50	13,50
5	14,47	14,47
6	16,08	16,08
7	17,17	17,17
8	18,62	18,62
For each extra week Up to 12 weeks	2,40	2,40
Female with litter (5-6 pups)		93,43
Time-mated pregnant female, guaranteed at E15 on delivery date		87,74
Not-guaranteed time-mated pregnant female		69,02
Old breeders	12,21	12,21

### BALB/cJRj



Age in weeks	MALE	FEMALE
3	12,86	12,86
4	13,50	13,50
5	14,47	14,47
6	16,08	16,08
7	17,17	17,17
8	18,62	18,62
For each extra week Up to 12 weeks	2,40	2,40
Female with litter (5-6 pups)		93,43
Time-mated pregnant female, guaranteed at E15 on delivery date		87,74
Not-guaranteed time-mated pregnant female		69,02
Old breeders	12,21	12,21

### C3H C3H/HeNRj



Age in weeks	MALE	FEMALE
3	16,20	16,20
4	17,33	17,33
5	18,52	18,52
6	20,10	20,10
7	22,94	22,94
8	24,83	24,83
For each extra week Up to 12 weeks	2,40	2,40
Female with litter (5-6 pups)		113,83
Time-mated pregnant female, guaranteed at E15 on delivery date		103,00
Not-guaranteed time-mated pregnant female		85,10
Old breeders	16,20	16,20



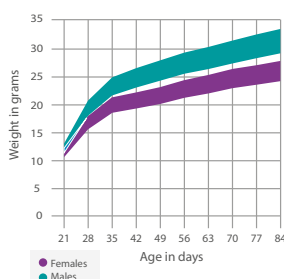
# STANDARD RANGE RESEARCH MODELS

**INBRED**

All our technical sheets available on [www.janvier-labs.com](http://www.janvier-labs.com)

**CBA CBA/JRj**

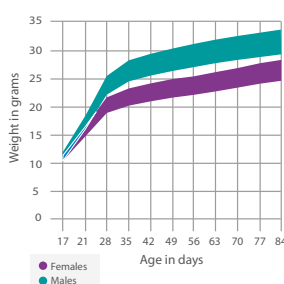
Price in €



Age in weeks	MALE	FEMALE
3	14,47	14,47
4	15,69	15,69
5	17,06	17,06
6	19,59	19,59
7	20,88	20,88
8	23,58	23,58
For each extra week Up to 12 weeks	2,59	2,59
Female with litter (5-6 pups)		119,39
Time-mated pregnant female		Contact us
Old breeders	14,47	14,47

**FVB FVB/NRj**

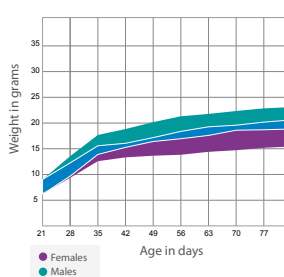
Price in €



Age in weeks	MALE	FEMALE
3	13,33	13,33
4	14,31	14,31
5	16,70	16,70
6	18,70	18,70
7	20,62	20,62
8	24,65	24,65
For each extra week Up to 12 weeks	2,62	2,62
Female with litter (5-6 pups)		95,71
Time-mated pregnant female, guaranteed at E15 on delivery date		92,57
Not-guaranteed time-mated pregnant female		74,10
Old breeders	13,33	13,33

**SJL SJL/JRj**

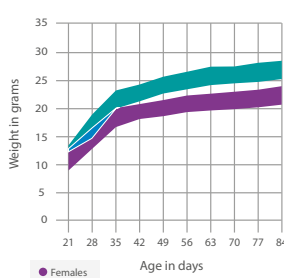
Price in €



Age in weeks	MALE	FEMALE
3	Contact us	23,16
4		24,35
5		27,06
6		29,94
7		32,63
8		35,46
For each extra week Up to 12 weeks		2,83
Female with litter (5-6 pups)		146,77
Time-mated pregnant female		Contact us
Old breeders		23,16

**129/Sv 129S2/SvPasOrlRj**

Price in €

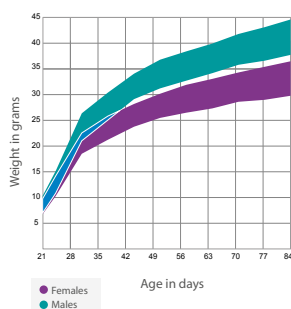


Age in weeks	MALE	FEMALE
3	37,14	37,14
4	40,04	40,04
5	42,84	42,84
6	45,70	45,70
7	48,88	48,88
8	52,05	52,05
For each extra week Up to 12 weeks	2,96	2,96
Female with litter (5-6 pups)		187,07
Time-mated pregnant female		Contact us
Old breeders	37,14	37,14

## OUTBRED

All our technical sheets available on [www.janvier-labs.com](http://www.janvier-labs.com)

### SWISS RjOri:SWISS (CD-1®)



Weight in grams*	Price in €	
	MALE	FEMALE
10-12	4,66	4,66
12-14	4,83	4,83
14-16	5,00	5,00
16-18	5,62	5,62
18-20	5,79	5,79
20-22	5,98	5,98
22-24	6,16	6,16
24-26	6,98	6,98
26-28	7,17	7,17
28-30	7,51	7,51
30-32	8,23	8,23
32-34	8,95	8,95
34 et +	Contact us	Contact us
Female with litter (10-12 pups)		67,20
Time-mated pregnant female, guaranteed at E15 on delivery date		45,72
Not-guaranted time-mated pregnant female		40,17
Old breeders	3,47	3,47

\*weight during packaging

### NMRI RjHan:NMRI



## GENETICALLY MODIFIED

### BIOZZI Asthmatic BP/2IcRj-BIOZZI



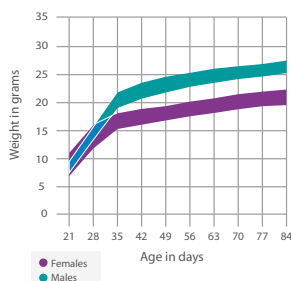


# STANDARD RANGE RESEARCH MODELS

## COISOGENIC

All our technical sheets available on [www.janvier-labs.com](http://www.janvier-labs.com)

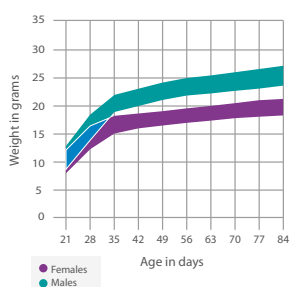
### B6 Agouti B6/Rj-A/A



Price in €

	MALE	FEMALE
<b>3 to 8 weeks old</b>		
For each extra week Up to 12 weeks	Contact us	
Old breeders		

### B6 Albinos B6/Rj-Tyr<sup>c/c</sup>



Price in €

Age in weeks	MALE	FEMALE
<b>3</b>	25,17	25,17
<b>4</b>	26,30	26,30
<b>5</b>	27,43	27,43
<b>6</b>	28,62	28,62
<b>7</b>	30,95	30,95
<b>8</b>	33,29	33,29
For each extra week Up to 12 weeks	2,34	2,34
Female with litter (5-6 pups)		140,72
Time-mated pregnant female, guaranteed at E15 on delivery date		127,93
Not-guaranteed time-mated pregnant female		85,28
Old breeders	25,17	25,17



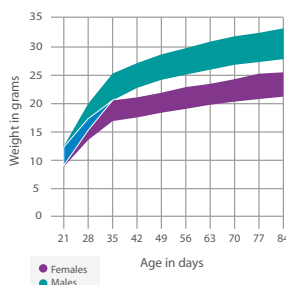


## HYBRID

All our technical sheets available on [www.janvier-labs.com](http://www.janvier-labs.com)

### B6D2F1 B6D2F1/JRj (♀ C57BL/6JRj x ♂ DBA/2/JRj)

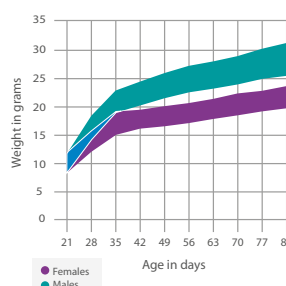
Price in €



Age in weeks	MALE	FEMALE
3	14,23	14,23
4	15,10	15,10
5	16,10	16,10
6	17,02	17,02
7	17,77	17,77
8	18,69	18,69
For each extra week Up to 12 weeks	1,58	1,58
Female with litter (5-6 pups)		83,40
Old breeders	14,23	14,23

### B6CBAF1 B6CBAF1/JRj (♀ C57BL/6JRj x ♂ CBA/JRj)

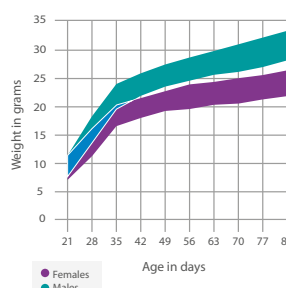
Price in €



Age in weeks	MALE	FEMALE
3	17,40	17,40
4	17,58	17,58
5	19,24	19,24
6	22,53	22,53
7	25,34	25,34
8	28,15	28,15
For each extra week Up to 12 weeks	2,81	2,81
Female with litter (5-6 pups)		92,29
Old breeders	17,40	17,40

### B6SJLF1 B6SJLF1/JRj (♀ C57BL/6JRj x ♂ SJL/JRj)

Price in €



Age in weeks	MALE	FEMALE
3		24,35
4		25,87
5		27,39
6		28,97
7		30,54
8		32,11
For each extra week Up to 12 weeks		4,13
Old breeders		19,07

### CSJLF1 CSJLF1/JRj (♀ BALB/cJRj x ♂ SJL/JRj)



Contact us

### C3D2F1 C3D2F1/JRj (♀ C3H/HeNRj x ♂ DBA/2JRj)



Contact us

We can help  
with the design  
of your hybrid  
model  
Contact us for  
more details.

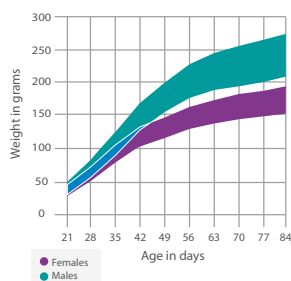


# STANDARD RANGE RESEARCH MODELS

**INBRED**

All our technical sheets available on [www.janvier-labs.com](http://www.janvier-labs.com)

## DARK AGOUTI DA/HanRj

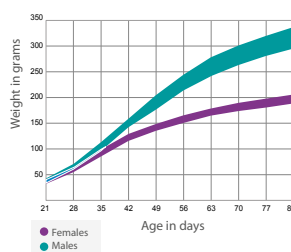


### Age in weeks

	MALE	FEMALE
3	29,84	29,84
4	32,53	32,53
5	35,98	35,98
6	39,85	39,85
7	47,49	47,49
8	52,23	52,23
9	57,54	57,54
For each extra week Up to 12 weeks	5,33	5,33
Female with litter (5-7 pups)		166,68
Time-mated pregnant female		Contact us
Old breeders	23,51	23,51

Price in €

## LEWIS LEW/OrIRj

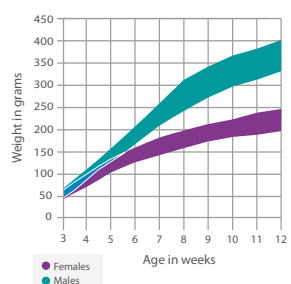


### Age in weeks

	MALE	FEMALE
3	29,71	29,71
4	31,75	31,75
5	36,00	36,00
6	40,93	40,93
7	43,37	43,37
8	46,08	46,08
9	51,92	51,92
For each extra week Up to 12 weeks	4,38	4,38
Female with litter (5-7 pups)		175,80
Time-mated pregnant female, guaranteed at E15 on delivery date		159,47
Not-guaranteed time-mated pregnant female		137,60
Old breeders	29,71	29,71

Price in €

## FISCHER F344/HanZtmRj

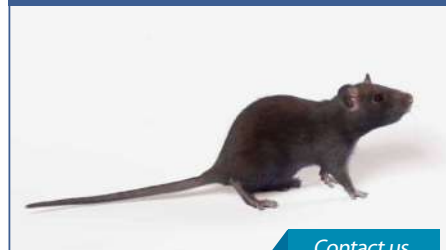


### Age in weeks

	MALE	FEMALE
3	30,36	30,36
4	31,95	31,95
5	36,15	36,15
6	39,91	39,91
7	45,94	45,94
8	48,40	48,40
For each extra week Up to 12 weeks	4,22	4,22
Female with litter (5-7 pups)		230,97
Time-mated pregnant female		Contact us
Old breeders	30,36	30,36

Price in €

## BROWN NORWAY BN/OrIRj



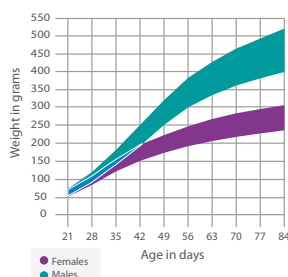
Contact us



## OUTBRED

All our technical sheets available on [www.janvier-labs.com](http://www.janvier-labs.com)

### WISTAR RjHan:WI



	FEMALE
Female with litter (10-12 pups)	94,33
Time-mated pregnant female, guaranteed at E15 on delivery date	90,37
Not-guaranteed time-mated pregnant female	67,27

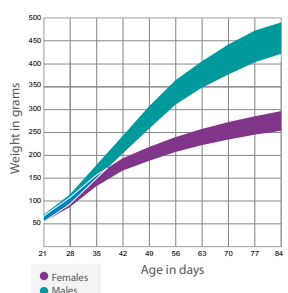
Weight in grams*	MALE	FEMALE
Up to 49	9,48	9,48
50 to 74	10,88	10,88
75 to 99	13,63	13,63
100 to 124	15,18	15,18
125 to 149	16,71	16,71
150 to 174	18,43	18,43
175 to 199	20,05	20,05
200 to 224	21,36	22,61
225 to 249	22,58	24,23
250 to 274	24,01	
275 to 299	26,15	
300 to 324	29,66	
325 to 349	30,95	
For each extra week Up to 15 weeks	2,44	2,44
Old breeders	9,48	9,48

\*weight during packaging

### SPRAGUE DAWLEY RjHan:SD (CD®)



CD® is a registered trademark of Charles River. All rights reserved.

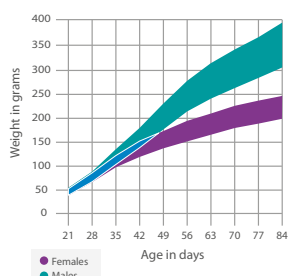


	FEMALE
Female with litter (10-12 pups)	104,61
Time-mated pregnant female, guaranteed at E15 on delivery date	110,18
Not-guaranteed time-mated pregnant female	75,11

Weight in grams*	MALE	FEMALE
Up to 59	9,41	9,41
60 to 74	10,17	10,17
75 to 99	12,26	12,26
100 to 124	13,64	13,64
125 to 149	14,83	14,83
150 to 174	16,16	16,16
175 to 199	17,26	17,26
200 to 224	18,82	18,82
225 to 249	19,16	19,16
250 to 274	20,12	20,12
275 to 299	21,07	
300 to 324	24,09	
325 to 349	25,33	
For each extra week Up to 12 weeks	2,34	2,34
Old breeders	9,41	9,41

\*weight during packaging

### LONG EVANS RjOri:LE



	FEMALE
Female with litter (10-12 pups)	113,93
Time-mated pregnant female, guaranteed at E15 on delivery date	112,58
Not-guaranteed time-mated pregnant female	82,55

Weight in grams*	MALE	FEMALE
Up to 49	23,77	23,77
50 to 74	26,58	26,58
75 to 99	29,39	29,39
100 to 124	32,21	35,04
125 to 149	35,04	39,01
150 to 174	37,02	43,53
175 to 199	39,01	45,86
200 to 224	41,27	48,42
225 to 249	43,53	
250 to 274	45,86	
275 to 299	48,42	
300 to 324	49,81	
For each extra week Up to 12 weeks	2,81	2,81
Old breeders	23,77	23,77

\*weight during packaging

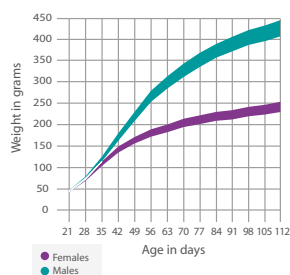


# STANDARD RANGE RESEARCH MODELS

## GENETICALLY MODIFIED

All our technical sheets available on [www.janvier-labs.com](http://www.janvier-labs.com)

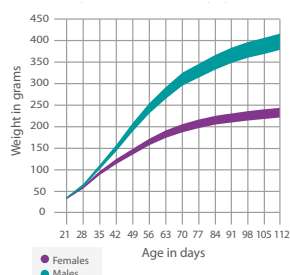
### WISTAR KYOTO WKY/KyoRj



#### Age in weeks

	MALE
3	33,44
4	34,90
5	37,21
6	41,57
7	48,51
8	52,66
9	60,32
10	67,99
11	75,65
12	83,31
Old breeders	33,44
Females	On request

### SHR SHR/KyoRj



#### Age in weeks

	MALE
3	77,95
4	82,89
5	90,45
6	101,12
7	111,10
8	122,96
9	132,87
10	141,69
11	149,67
12	157,64
Old breeders	77,95
Females	On request

### LUND METS

BBDR.cg-lepr<sup>db/db</sup>.cp/lundRj



Contact us





# RATS

## AND OTHER RODENTS

### CRYOPRESERVED RATS

All our technical sheets available on [www.janvier-labs.com](http://www.janvier-labs.com)

**BLACK HOODED or PVG**  
PVG/OrlRj



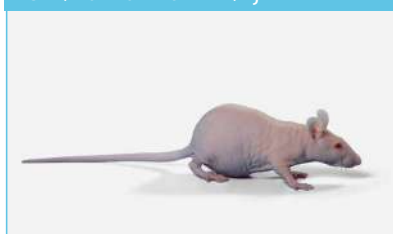
**FAWN HOODED**  
Rjlbm:FH



**SPRAGUE DAWLEY Hairless**  
Rj:SDH-Dsg4



**FISCHER Nude**  
F344/HanZtm-Foxn1<sup>nu</sup>/Rj



**LOU Nude**  
LOU/M-Foxn1<sup>nu</sup>/Rj

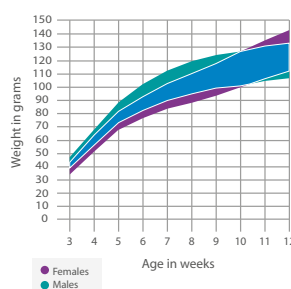


CONTACT US FOR ANY REQUEST

### OTHER RODENTS - OUTBRED

**GOLDHAMSTER RjHan:AURA**

Price in €

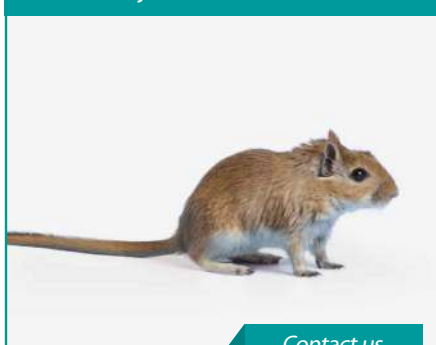


A reference model for the study of COVID (Sars-CoV-2) and the development of associated therapies

Immediate availability

Weight in grams	MALE	FEMALE
40 to 49	29,73	29,73
50 to 59	33,13	33,13
60 to 79	38,46	38,46
80 to 99	41,28	41,28
100 to 119	47,19	47,19
For each extra week Up to 12 weeks	5,92	5,92
Female with litter		158,48
Time-mated pregnant female		Contact us
Old breeders	29,73	29,73

**GERBILLE RjTub:MON**



Contact us



# CUSTOMISED OUR MODELS GENETICALLY MODIFIED



## CUSTOMISED MODELS SUPPORT

### Choose a complete support of your model, from the creation by our partners to delivery

JANVIER LABS has created a department « Customised Models Support » to support the creation of genetically modified research models (overexpression of genes, knock-out, knock-in, RNAi, genetrap, conditional or inducible systems,....).

#### You want to create your genetically modified mouse or rat model?

Benefit from our partners for the creation of models and a complete support by our departments from the creation until the delivery taking advantage of all our associated services.

All stages of your project are supported by a unique and dedicated project manager in order to assure the strict respect of your needs and your requirements. Our project managers are characterized by their responsiveness, their professionalism, their expertise and their ability to adapt to the customer's goals.

## EMBRYO KITS TO FACILITATE YOUR RESEARCH

JANVIER LABS embryo kits enable you to access WT embryos directly from a JANVIER LABS genetic background. Our kits also enable you to reach the stages of production of embryos in your own animal facility: save time, free up space, standardise your procedures (mastering of quantities and quality), reduce the quantity of animals used, increase flexibility...



Description	Objectives and details of the services
<b>Embryo Kits</b>	<i>Technical sheet available on <a href="http://www.janvier-labs.com">www.janvier-labs.com</a></i>
<b>QUICKBLASTO®</b> (blastocysts for ES cell injection)	
Small	10 straws containing 25 frozen embryos each
Large	40 straws containing 25 frozen embryos each
<b>EAZYGOTE - Zygotes Kit</b>	
Small	10 straws containing 25 frozen zygotes each
Large	40 straws containing 25 frozen zygotes each
<b>2CELL KIT</b>	
Small	10 straws containing 25 frozen 2-cell stage embryos each
Large	40 straws containing 25 frozen 2-cell stage embryos each

QUICKBLASTO® is a registered trademark of JANVIER LABS. All rights reserved.

# SECURE OUR RESEARCH

whilst saving resources through sperm cryopreservation of your mice with the JAX™ Sperm Cryo Kit\*



## THE KIT CONSISTS OF 2 PARTS:

### Media

- 3 ml vials, a vial is provided per strain
- In each Kit, an additional vial is included for training purposes

### 25 straws are provided per strain in each Kit

- 20 for storage and 5 extra
- 4 cassettes for permanent storage and transport which contain 5 straws each
- Straws and cassettes with unique identification numbers

## CRYOPRESERVATION OF SPERM:

- Enables you to **dramatically reduce costs** associated with mouse colony maintenance, particularly of low use strains
- **Protects your valuable mouse strains** against disease, breeding cessation and disaster

### Protects your research by:

- Limiting genetic drift
- Preventing the spontaneous loss of phenotype
- Enabling easy recovery of SOPF mice: no quarantine required upon arrival
- Facilitating strain transfer to collaborators

## SPERM CRYOPRESERVATION KIT

### Sperm cryopreservation kit

#### JAX™ Sperm Cryo Kit

Technical sheet available on [www.janvier-labs.com](http://www.janvier-labs.com)

for 3 strains, for 6 strains and for 9 strains





# BREED AND SECURE OUR MODELS

## CRYOPRESERVATION

Description		Objectives and details of the services
<b>Sperm cryopreservation using the JAX™ Sperm Cryo Kit</b>		
Sperm cryopreservation		20 straws (each contains 4 aliquots of 10 µl of sperm - ready for use)
<b>Embryo cryopreservation</b>		
Your strain x JANVIER LABS' strain or your strain ♂ x ♀		250 frozen embryos or 150 to 200 frozen embryos of the strain
<b>Mixed cryopreservation embryos and sperm from mice</b>		
Cryopreservation of sperm and embryos from the same murine line In vitro quality controls included		20 sperm straws + 75 to 100 embryos (TgxTg) + IN VITRO quality controls
<b>Quality control from cryopreserved sperm or embryos</b>		
Cryopreserved sperm	<i>in vitro</i> <sup>2</sup> quality control (QC1)	2-cell stage development rate after defrosting + <i>in vitro</i> fertilisation
	<i>in vivo</i> <sup>1,2</sup> quality control (QC2): Birth rate after implantation of embryos from QC1 into pseudopregnant females	
Cryopreserved embryos	<i>in vitro</i> quality control (QC1)	Viable embryo rate after defrosting and culture during 24 hours (from 2-cell stage to morula stage)
	<i>in vivo</i> <sup>1</sup> quality control (QC2): Birth rate after defrosting and reimplantation into pseudopregnant females	
<b>Cryo-storage of straws</b>		
Cryo-storage of frozen sperm straws <sup>2</sup>		Per year or long-time cryo-storage for 1 strain (up to 20 frozen sperm straws)
Cryo-storage of frozen embryos		Per year or long-time cryo-storage for 1 strain (up to 250 frozen embryos)

## ASSISTED REPRODUCTION

<b>Rederivation by embryo transfer</b>		
Rapid rederivation	Your strain x JANVIER LABS' strain or your strain ♂ x ♀	Restitution of at least 2 pregnant ♀
Complete rederivation	Your strain x JANVIER LABS' strain or your strain ♂ x ♀	Restitution of at least 3 to 6 SOPF males and 3 to 6 SOPF females
<b>Recovery of a strain<sup>3</sup> from cryopreserved sperm</b>		
From cryopreserved sperm using the JAX™ Sperm Cryo Kit or other method		Restitution of at least 3 to 6 SOPF males and 3 to 6 SOPF females <sup>3</sup>
From cryopreserved sperm using the JAX™ Sperm Cryo Kit or other method		Delivery of a minimum of 2 pregnant females
<b>Recovery of a strain from cryopreserved embryos</b>		
From embryos cryopreserved by JANVIER LABS or by others		Restitution of at least 3 to 6 SOPF males and 3 to 6 SOPF females <sup>3</sup>
From embryos cryopreserved by JANVIER LABS or by others		Delivery of a minimum of 2 pregnant females
<b>Quick colony expansion by <i>in vitro</i> fertilisation</b>		
Speed colony expansion from fresh or cryopreserved sperm to obtain : • 8 weeks old SOPF animals (at least 40 animals) • 4 weeks old SOPF animals for High Speed Backcross or experimental animals (at least 40 animals) • Pregnant females obtain by embryo transfer from the model, (at least 10 pregnant females)		Restitution of the produced SOPF colony
<b>Strain rescue</b>		
Strain rescue using the male	Mating test and <i>in vitro</i> fertilisation	Restitution of the produced SOPF animals
Strain rescue using the female	Mating test and ovarian transplant	Restitution of the produced SOPF animals
For any assisted reproduction service, optional: identification and biopsy of pups born		



## CUSTOMISED BREEDING

Your project is supported by a dedicated Project Manager who will accompany you, inform you and advise you throughout the process. From the establishment of the strategy focused on achieving your objectives, until the delivery of your animals of interest, our Project Managers are distinguished by their responsiveness, their professionalism and their ability to adapt to your objectives.

Description
<b>Customised breeding - Mouse / Rat - SPF<sup>4</sup> or SOPF<sup>4,5</sup></b> <ul style="list-style-type: none"> <li>Each Breeding strategy is personalized according to the needs and specificities of each project</li> <li>Mating, weaning, stop mating, euthanasia, gestation monitoring</li> <li>SOPF or SPF health monitoring controls</li> <li>Follow-up and scientific support of the project by a dedicated project manager</li> <li>Sending of a monthly follow-up report - Monthly videoconferencing</li> <li>Dedicated customised breeding software (AniBio), 24/7 (module animals, breeding, financial management, services) :</li> </ul>
<b>Genotyping - Mouse / Rat</b> <ul style="list-style-type: none"> <li>Evaluation of the genetic purity of a line by analysis of 10,000 SNPs (estimation of inbreeding, identification of primary and secondary genetic backgrounds, presence of certain genetic constructs, etc.)</li> <li>Real-time PCR genotyping for one or more genes per gene <ul style="list-style-type: none"> <li>- Fast and reliable results (24 to 48 hours)</li> <li>- Development of PCR protocols</li> </ul> </li> </ul>
<b>Speed Congenics - Mouse / Rat</b> <ul style="list-style-type: none"> <li>50% time saving compared to classical backcross</li> <li>At every generation, a panel of 10000 SNPs (mouse) or 96 SNPs (rat) is analysed on 20 samples</li> <li>In a maximum of 5 generations, the animals are composed of more than 99.9% of the recipient genome</li> </ul>
Options : <ul style="list-style-type: none"> <li>Identification and biopsies</li> <li>Programmed mating</li> <li>Glycemia measurement</li> <li>Weighing</li> <li>Use of a specific food</li> <li>Rental of IVC racks</li> <li>Specific accommodation conditions</li> <li>Cryopreservation of sperm and/or embryos</li> <li>Custom protocols</li> </ul>

<sup>1</sup> Biopsies for genotyping if necessary

<sup>2</sup> This service can be performed by The Jackson Laboratory

<sup>3</sup> Subject to the quality of the provided material in case of cryopreservation externally

<sup>4</sup> Free from all pathogens registered in the FELASA list

<sup>5</sup> Free from opportunists defined by JANVIER LABS



# PREPARE OUR MODELS

## BIOLOGICAL PRODUCTS

Products	Species and characteristics of the models	Price (per ml)		
		1 to 100 ml	101 to 250 ml	251 to 500 ml
Blood products				
Whole blood	Outbred rat	On request		
	Inbred rat			
	Outbred mouse			
	Inbred mouse			
	Other rodents			
Plasma	Outbred rat			
	Inbred rat			
	Outbred mouse			
	Inbred mouse			
	Other rodents			
Serum	Outbred rat			
	Inbred rat			
	Outbred mouse			
	Inbred mouse			
	Other rodents			
Serum for embryo culture	Outbred rat			

Products	Species and characteristics of the models	Price (per ml)
<b>Organ sampling</b>		
<b>Nervous system</b> Brain with or without the cerebellum, spinal cord	All species	On request
<b>Endocrine system</b> Adrenal glands, thyroid		
<b>Immune system</b> Thymus, spleen		
<b>Digestive system</b> Tongue, salivary glands, stomach, intestine (duodenum, jejunum, ileum), caecum, colon, liver, pancreas		
<b>Adipose tissue</b> Mesenteric adipose tissue, peri-gonadal adipose tissue, Perirenal adipose tissue, brown adipose tissue		
<b>Urogenital system</b> Kidneys, bladder, prostate, testes, seminal vesicle, ovaries, uterus		
<b>Cardiopulmonary system</b> Lungs, heart, aorta		
Other: skin, bones, muscle, eyes...		

Products	Species and characteristics of the models	Price (per ml)
<b>Other biological materials</b>		
Urine (rat, mouse)	All species	On request
Feces		
Milk (rat, mouse)		
Amniotic fluid		
Cerebrospinal fluid	Rats	

## BENEFIT FROM A LARGE RANGE OF SERVICES TO FACILITATE YOUR RESEARCH

### SURGERY

Services	Species and characteristics of the models	Price		
Excision and ligature surgery				
Ovariectomy	From 4 weeks of age	On request		
Ovario-hysterectomy				
Hysterectomy				
Splenectomy				
Vasectomy				
Castration				
Adrenalectomy				
70% hepatectomy (rat, mouse)				
Nephrectomy (unilateral or 5/6)				
Tubal ligation				
Ureter ligation				
Other types of ligation				
Catheterisation				
Non-vascular catheters:				
Bile duct	Rats with a minimum weight of 200 g,  Pregnant female rats (from day 9-10),  Mice (jugular and non-vascular catheters on the digestive tract)	On request		
Stomach*, duodenum*, jejunum*, ileum*, colon*, intra-peritoneal* (injection)				
Bladder*				
Vascular catheters:				
Jugular vein				
Femoral vein				
Carotid artery				
Femoral artery				
Double vascular catheter				
Double vascular / non-vascular catheter				

\* Infusion only

The weight of the animal required on the order form corresponds to the weight at the moment of the operation.

The price of the animal, the preparation before or after the operations and the treatments will be added to the price of the operation.

## EXPERIMENTAL PROTOCOLS

Services (non-exhaustive list of protocols)	Species and characteristics of the models	Price		
Customised protocols and models				
<b>Examples of protocols:</b>  DIO (Diet Induced Obesity) studies with different energy sources (lipids, carbohydrates, proteins...)  Restricted diet studies  Inorganic or organic implant placement and subsequent monitoring including its evolution and its interaction with the animal	All species depending on the needs of the protocol and its feasibility	On request		
Pathological models				
<b>Examples of pathological experimental models:</b>  Surgery model: jaundice model in rat, osteoporosis model in rat by ovariectomy of feMALEs  Substance injection model: arthritis model by Freund adjuvant injection, model of type II diabetes by streptozotocin injection in rats and mice  Diet-induced model: induced obesity by diet, hypercholesterolemia / atherosclerosis induced by high saturated fat and cholesterol diet, hypertriglyceridemia / insulin tolerance by high fructose / sucrose diet			All species	On request



# PACKAGING AND TRANSPORT



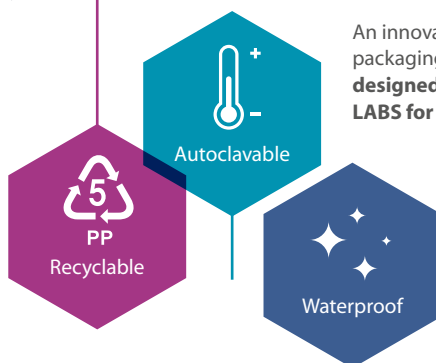
## 100% IN-HOUSE TRANSPORT

At **JANVIER LABS**, we have decided to provide this service in-house in order to reassure ourselves that it is carried out in a manner which meets our expectations. We manage the whole logistics chain from our site to the door of your animal facility.

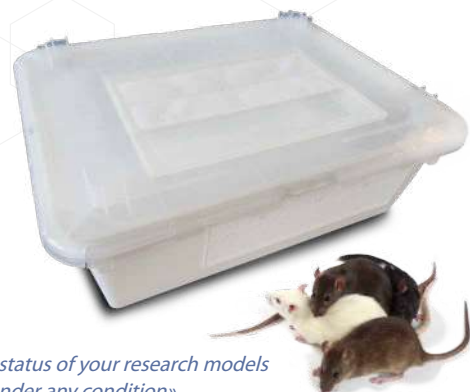
### Our transport policy outside Europe

So that the distance is not an obstacle in order for you to be supplied with quality animals, **JANVIER LABS** has selected specialized partners for the transport of laboratory animals for the most remote or specific destinations. Each of our partners has been audited and validated by our quality team and our vets.

## JANVIER LABS' INNOVATION



An innovative up to date transport packaging entirely recyclable has been **designed and created by JANVIER LABS** for a 100% secured transport.



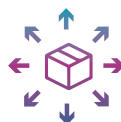
*«As the SPF and SOPF status of your research models must be guaranteed under any condition»*



The most important transport network in Europe



45,000 kms each week under rigorous sanitary conditions



Deliveries weekly in all Europe



A team of over 20 drivers



A fleet of 20 trucks

## A REPATRIATION SERVICE WHEREVER YOU ARE

Some of our vehicles are also equipped with hermetic boxes for the repatriation of non-SPF animals or biological materials (sperm or embryo).



## WEEKLY DELIVERIES TO CENTRAL EUROPE

### FLEXIBILITY, REACTIVITY AND RELIABILITY!

We manage administrative procedures for your delivery.



Packaging (measurements)	Price in £
Packaging JANVIER LABS - SPF	On request
Packaging JANVIER LABS - SOPF	
Packaging for catheterised animals	
Dry ice packaging - large and small model	
Refreeze packaging	
<b>Transport gel</b>	
Gelatine block - in bag (sold by 10 or 30)	

## PACKAGING ADAPTED TO ANIMAL'S HEALTH STATUS

### Transport gel provided free

All of our packaging contains a drink substitute to rehydrate the animals during transit. This product guarantees the preservation of the SOPF and SPF status.



## STRESS MANAGEMENT AND PROTECTION OF ANIMAL WELFARE DURING THE JOURNEY

In order to minimise the animals' stress during journeys, we have put appropriate measures in place, like driving on motorways and outsourced teams of drivers. Thanks to these measures the journeys are of a reduced length, without stops and more comfortable for the animals in order to guarantee optimal stability conditions for our models at the point of delivery.

# GENERAL TERMS AND CONDITIONS

JANVIER LABS is a joint-stock company under French law having a registered office in Genest Saint Isle (53940) – Route des Chênes Secs, registered with the Registry of Commerce and Companies of Laval under the number 340 663 079.

JANVIER LABS specialises in the production, breeding and sale of rodents intended for use in the framework of experimental procedures for scientific purposes (hereafter the "RESEARCH MODELS") and their derived products. Also in the delivery of laboratory services, reproduction sciences or customized breeding and their accessory products and services, even sold individually (hereafter the "SERVICES").

## SCOPE

1. In compliance with article L 441-6 of the Commercial Code, the present general terms and conditions of sale ("CGV") constitute the unique basis for the commercial relationship between the Parties.

They apply to all sales of JANVIER LABS to its customers, professional buyers (hereafter the "CUSTOMER"), of RESEARCH MODELS, derived products and sub-products or SERVICES (all together hereafter the "PRODUCTS"), such that these PRODUCTS are described in JANVIER LABS's catalogue, (hereafter the "CATALOGUE"), as well as on its website <http://www.janvier-labs.com>, and/or in its quotations, bids or equivalent documents issued by JANVIER LABS.

2. The information appearing in the CATALOGUE, brochures and the JANVIER LABS tariff are given as an indication. They can be modified at any time by JANVIER LABS.

3. The CGVs are attached to the CATALOGUE and provided by JANVIER LABS at each order.

By placing the order, the CUSTOMER recognises having read the CGVs and accepted them unconditionally (hereafter the "ORDER"). The CUSTOMER undertakes that their employees and any third party collaborating in the research that he conducts or in which he participates, shall respect these CGVs. Because of this, the CUSTOMER waives the right to invoke any conflicting document and in particular, its own terms and conditions of purchase.

Waivers to the present CGVs, negotiated between the Parties, must be subject to a written agreement prior to their application, validated by JANVIER LABS.

4. The fact of not exercising at any time, a prerogative recognised by the present CGVs, or not requiring the execution of one of the clauses therein, can under no circumstances be interpreted as a modification, nor as an express or tacit renunciation of the right to exercise said prerogative or to require execution of it, in the future.

## VALIDITY OF GENERAL TERMS AND CONDITIONS

1. JANVIER LABS reserves the possibility to modify the CGVs at any time. The new CGVs shall be applicable to ORDERS placed as of their publication.

2. The CGVs in force are published on the JANVIER LABS website. Therefore, they are available at any time.

## CREATION OF THE ORDER

JANVIER LABS can provide advice in the framework of placing the ORDER. However, as a specialised professional in the field of research, the CUSTOMER remains entirely and solely responsible for their choice of ORDER and the complete character of the information they have given to JANVIER LABS.

CUSTOMER's duty to inform and prerequisites:

In particular concerning SERVICES to perform on biological material supplied by the CUSTOMER or by any third party at the request of the CUSTOMER (hereafter the "BIOLOGICAL MATERIAL"), the CUSTOMER undertakes to provide JANVIER LABS beforehand, in the request for quotation, all the information which they possess concerning said BIOLOGICAL MATERIAL, in particular, any difficulties of reproduction performance of the strain(s) of rodents concerned, which could have consequences for the performance of the SERVICES.

When the BIOLOGICAL MATERIAL contains GMOs, it must correspond to the risk I GMO class, to the exclusion of any other risk class. The CUSTOMER must send JANVIER LABS, a copy of the declaration receipt or a copy of the approval indicating the project(s) involving the GMOs concerned.

The BIOLOGICAL MATERIAL must be free from zoonosis.

This information supplied by the CUSTOMER with regards to the SERVICES, including the Project information sheet and the CGVs form in all cases an integral part of the ORDER.

Order:

To validate the ORDER, the offer or the quotation must be accepted in writing, even so by e-mail, and received by JANVIER LABS prior the end to the validity of the offer. The ORDER is only validly filled after its express acceptance by JANVIER LABS and payment of a possibly specified down payment. JANVIER LABS then sends the CUSTOMER, an order acknowledgement (hereafter an "AO"). The CUSTOMER then has 12 hours in which to verify the content of the AO and to formulate any comments. In case of difference between the AO and the ORDER, the AO will prevail.

If the SERVICE requires an authorisation from the Ministère de l'enseignement supérieur et de la recherche (MESRI), [Ministry of Higher Education and Research], the validity of the ORDER is subject to the authorisation granted to JANVIER LABS by the MESRI.

2. JANVIER LABS reserves the right to suspend or refuse any new order from the CUSTOMER in the event of unpaid invoices or doubts as to the CUSTOMER's solvency, without the CUSTOMER being able to argue an unjustified refusal to sell, or claim any compensation.

## MODIFICATION/CANCELLATION OF THE ORDER

1. Beyond this period of 12 hours after sending the ARC, the ORDERS are irrevocable.

2. Any modification requested by the CUSTOMER can only be taken into account in the limit of JANVIER LABS's possibilities and at its sole discretion, if they are formulated in writing, prior to the planned delivery date or the production of the PRODUCTS concerned. JANVIER LABS may make the modification of the ORDER subject to the CUSTOMER's signature of a specific purchase order, in particular in the event of a price and delivery time adjustment.

3. If the CUSTOMER cancels the ORDER after the ARC, for any reason whatsoever, except for force majeure, the deposit paid will be automatically acquired by JANVIER LABS, and will be deducted from the amount of the penalties or the costs mentioned below, whichever is higher.

In any case, the CUSTOMER must pay, as appropriate:

- For SERVICES: (i) the portion of the SERVICES already performed, (ii) any expenses incurred by JANVIER LABS in performing the SERVICE that are not subject to cancellation, and (iii) expenses and costs incurred by JANVIER LABS as a result of such Order cancellation.

- About RESEARCH MODELS, their derived products and sub-products: a penalty calculated on the total amount of the ORDER before tax for the RESEARCH MODELS produced, derived products and by-products concerned, according to the number of working days remaining between the delivery date set by the AO and the date when JANVIER LABS receives the request to cancel the ORDER.

Thus, for ORDERS of non-mutant RESEARCH MODELS, aged less than 3 months, their derived products or sub-products mentioned in the CATALOGUE: if the request is received

- 28 to 22 days before the date of delivery, the penalty will be 10%

- 21 to 15 days before the date of delivery, the penalty will be 25 %

- 14 to 8 days before the date of delivery, the penalty will be 50 %

- 7 to 3 days before the date of delivery, the penalty will be 75 %

- Less than 3 days before the date of delivery, the penalty will be 100 %

For ORDERS of non-mutant RESEARCH MODELS, aged 3 to 18 months, their derived products or sub-products mentioned in the CATALOGUE: If the request is received

- 28 to 22 days before the date of delivery, the penalty will be 10%

- 21 to 15 days before the date of delivery, the penalty will be 25 %

- 14 to 8 days before the date of delivery, the penalty will be 75%

- Less than 8 days before the date of delivery, the penalty will be 100 %

For ORDERS of RESEARCH MODELS, aged 19 months and more, their derived products or by-products and for any ORDERS of mutant RESEARCH MODELS, their derived products or by-products mentioned in the CATALOGUE: If the request is received

- More than 30 days before the date of delivery, the penalty will be 50 %

- 30 days and less before the date of delivery, the penalty will be 100 %.

For other ORDERS of RESEARCH MODELS, their derived products or sub-products non-mentioned and whose specificities are not provided for in the CATALOGUE, the penalty shall be 100%, i.e. the total amount before tax of the ORDER, regardless of the notice period.

## TRANSPORT

### Back-up

Prior to the transfer of BIOLOGICAL MATERIAL, the CUSTOMER must make a back-up of the corresponding strain till JANVIER LABS confirms the completion of the laboratory service or the reproductive science service, or until the first cohort of animals coming from the custom breeding service is either delivered to the CUSTOMER or to the third party designated by the CUSTOMER.

### Collection of BIOLOGICAL MATERIAL

The CUSTOMER is in charge of the preparation, packaging, wrapping, and labelling of the packages in accordance with the regulations applicable in all transit countries.

The CUSTOMER must supply all the information and documents required by JANVIER LABS or the haulier, within the five (5) working days preceding the collection of the BIOLOGICAL MATERIAL. This obligation in particular concerns the authorisations required by the regulation in force concerning GMOs.

### Transfer of risks

The transfer of risk and ownership of the PRODUCTS and/or the results of the SERVICES (the "RESULTS") takes place at the agreed place of delivery, upon their physical receipt by the CUSTOMER. Unless otherwise set forth in the AO or failing clarifications on this AO, the transfer of risks on PRODUCTS or RESULTS shall proceed as per the FCA Incoterm CCI 2010. Likewise, unless otherwise stipulated in the AO or failing clarifications on this AO, the transfer of risks on BIOLOGICAL MATERIAL sent to JANVIER LABS is carried out according to DDP Incoterm CCI 2010.

## DELIVERY - ACCEPTANCE

1. Contractual deadlines are set in the AO.

Delivery delays of PRODUCTS and/or RESULTS or the execution of SERVICES cannot be a reason for the cancellation or termination of the ORDER.

2. Upon receipt of the PRODUCTS and/or the RESULTS, the CUSTOMER shall check their apparent compliance to the ORDER and formulate their reservations on the delivery note. These reservations must be issued and confirmed in writing within three (3) days following reception, both to the carrier and to JANVIER LABS, in accordance with the provisions of the article L 133-3 of the Commercial Code concerning damage or loss during transport, and with the intention expressed here by the Parties in case of apparent non-compliance. Otherwise, the PRODUCTS and/or RESULTS are deemed to be in conformity and definitively approved without reservation by the CUSTOMER.

3. The CUSTOMER must issue their claim without delay if there is an inherent defect in the delivered PRODUCTS and/or RESULTS, not apparent at the time of reception and which is revealed within a maximum period of fourteen (14) weeks as of the shipping date. Following the expiration of this fourteen (14) weeks' warranty period, no claim made against JANVIER LABS for hidden defects will be considered.

4. Allegations of non-compliance or latent defect shall only be processed by JANVIER LABS if they are made in writing, even so by e-mail, within the above-mentioned deadlines and in the appropriate forms.

It is the responsibility of the CUSTOMER as part of their claim, to provide evidence concerning the reality of the defect or the alleged non-compliance.

The CUSTOMER shall allow JANVIER LAB to conduct appropriate audits as it deems necessary, including on-site visits to the CUSTOMER, by JANVIER LABS experts.

5. For sanitary reasons, no return of RESEARCH MODELS, their by-products and/or RESULTS can be made without prior consent from JANVIER LABS. If a return is agreed, only the carrier chosen by JANVIER LABS is allowed to carry out the return.

JANVIER LABS will only bear the cost of returning the goods if the duly declared anomaly has actually been noted by JANVIER LABS or its representative, and if JANVIER LABS is responsible for it.

6. In any case, if an anomaly is noted, the CUSTOMER must immediately take any measure necessary to prevent an aggravation and/or propagation of this anomaly and the associated damage.

7. The claim shall not suspend the CUSTOMER's duty to pay for the ORDERS concerned, without prejudice to the price reduction clause, hereinafter provided for.

## PRICE

1 The price of the PRODUCTS is based on the current price list. The price of an offer is valid only during the period of validity of this offer.

2. Prices are per unit and defined for an agreed period and/or volume and/or capacity. Unless otherwise agreed in writing by JANVIER LABS, prices are net and without discount, ex works/ EX WORKS Incoterm CCI 2010 and excluding packaging, which is invoiced in addition on the basis of the CATALOGUE price. These net prices do not include transportation, customs fees, taxes, or insurance, which shall be borne by the CUSTOMER.

Taxes and duties due are calculated on the day of invoicing of the ORDERS, in compliance with the applicable texts and laws. Possible variations of the tax rate will be fully reflected in the price. Any duty, tax or collection charged on the payment of the price by the CUSTOMER will remain at their expense. The CUSTOMER must then complete the payment of the price, so that JANVIER LABS indeed receives the net agreed price.

3. Tariffs are revised annually with effect as of January 1st. unless the AO states other provisions, the SERVICES renewed or extended shall be subject to the annual revision of prices. The price revised each year shall be set from the tariff in force for the SERVICES concerned.

4. Unless expressly extended as provided for in the AO, the SERVICE shall be tacitly renewed for an indefinite period, except where one of the Parties has notified its intention not to renew the SERVICE, at least one (1) month before the end of the initial period, by a registered letter with acknowledgement of receipt. Once renewed or extended, the SERVICE ORDER may be terminated at any time, subject to a notice period of one (1) month, sent by registered letter with acknowledgement of receipt.

## PAYMENT TERMS

1. Unless otherwise specified in the AO, or barring a different express written agreement, accepted separately by JANVIER LABS, the price is payable in Euro by bank transfer, to the bank account indicated by JANVIER LABS.

2. Invoices are payable thirty (30) days end of the month from their date of issue. No discount will be given by JANVIER LABS for immediate payment or payment made prior to the due date of the invoice.

3. A down-payment can be requested for any sale of PRODUCTS.

For SERVICES, the down-payment is 50% (unless otherwise specified in the AO). The costs of transport and repatriation will be invoiced upon receipt of the BIOLOGICAL MATERIAL, in the premises of JANVIER LABS.

The down payment must be paid in cash upon the invoice receipt, and in the forms specified in paragraph 1 of this article.

4. The payment terms granted by JANVIER LABS to the CUSTOMER depend on the CUSTOMER's solvency, payment profile or country risk. JANVIER LABS may ask the CUSTOMER at any time, including during the completion of an ORDER, to provide its accounting documents, in particular its profit and loss accounts, even if they are forecast. Likewise, if JANVIER LABS has serious or specific reasons to fear any payment difficulties (first order, deterioration of the CUSTOMER's account, loss or reduction of guarantee, etc.), JANVIER LABS may make acceptance or continued execution of the current and/or future ORDER(s) conditional: (i) on payment of a partial or total deposit, (ii) on the provision of a sufficient bank guarantee or (iii) on cash payment, depending on its choice.

Should the CUSTOMER refuse to communicate its accounts or does not respect the payment terms of the ORDER(S), JANVIER LABS may suspend the execution of the ORDERS in progress, and refuse to deliver or execute the PRODUCTS concerned, without the CUSTOMER being able to argue an unjustified refusal of sale, or claim any compensation.

5. Unless expressly agreed in advance and in writing by JANVIER LABS, and provided that the reciprocal claims and debts are certain, liquid and due, no compensation may be properly enforced between any penalties payable by JANVIER LABS on the one hand, and the sums owed by the CUSTOMER to JANVIER LABS on the other.

6. Any late payment shall by rights, accrue interest penalties according to the most recent rate of interest applied by the European Central Bank to its refinancing transaction (as of January 1st for the first half-year or July 1st for the second half-year), increased by ten (10) points, calculated on the number of late days noted, as of the 1st late day, on the sums due, until their complete payment. Payment means the day on which the entire sums due have been credited to JANVIER LABS' account.

The CUSTOMER must also pay a flat-rate compensation of forty (40) Euro per unpaid invoice, to as recovery costs, without prejudicing the JANVIER LABS' right to claim supplementary compensation, if the actual recovery costs exceed this amount.

These penalties shall automatically be charged to the CUSTOMER's account.

7. Finally, in the event of non-payment of an invoice on its due date, and without prejudice to the termination clause provided for here below, JANVIER LABS may accelerate the term of all invoices issued, as well as suspend the execution of all current and future ORDERS, and/or require cash payment, after sending a formal notice that has remained without effect eight (8) calendar days after its receipt.

#### COMPLIANCE - GUARANTEE

1. JANVIER LABS warrants having all the necessary administrative authorisations to exercise its activities.

2. For its part, the CUSTOMER is responsible for the regularity of its activities, of its BIOLOGICAL MATERIAL, its research protocols and of the use of the PRODUCTS and RESULTS with regard to the law applicable to it.

3. JANVIER LABS guarantees PRODUCTS that comply with the AO, as part of its obligation of means. It also benefits from the usual tolerances in its field.

JANVIER LABS is in no way responsible for and in relation with the composition and characteristics of the BIOLOGICAL MATERIAL.

In order to assert its rights, the CUSTOMER must, at the risk of forfeiture of any action applying to it, inform JANVIER LABS in the forms and within the deadlines set by the article "DELIVERY-ACCEPTANCE" here above.

4. JANVIER LABS performs regular health inspections whose terms and results are accessible on its website and upon request. It undertakes to provide information strictly necessary for the proper completion and monitoring of the ORDERS. Upon delivery of the RESEARCH MODELS and/or RESULTS, JANVIER LABS delivers a health certificate corresponding to the SPF or SOPF status it has defined, and that has been chosen by the CUSTOMER when it placed its ORDER.

To perform the SERVICES ordered, JANVIER LABS alone decides on the care and criteria for using BIOLOGICAL MATERIAL with regard to AAALAC.

For animals constituting the BIOLOGICAL MATERIAL or the RESULTS, JANVIER LABS retains the possibility of euthanizing any that are suffering according to a pain matrix predefined with the JANVIER LABS's in-house Ethics Committee. Such a pain matrix may be communicated to the CUSTOMER, upon its request.

In any case, the issuance of the sanitary certificate does not exempt the CUSTOMER from applying its own biosecurity rules and ensuring its own sanitary program.

5. The weight and/or the age of the RESEARCH MODELS and the RESULTS indicated on the delivery notes, is their weight and/or age when they are packaging in the premises of JANVIER LABS for shipment.

6. Concerning gestating females:

- JANVIER LABS guarantees the gestation under conditions specific to each strain of RESEARCH MODELS presented in the CATALOGUE;

- JANVIER LABS neither warrants the number of animals per litter nor the exact date of the parturition;

- JANVIER LABS does not guarantee the risks of interruption of the gestation during the transport if the gestation is, either less than five (5) days (at the time of their packaging for delivery), or greater than 2/3 of the gestation time of the strain in question.

#### PROPERTY

1. The CUSTOMER shall declare having the rights and documents necessary for entrusting the BIOLOGICAL MATERIAL to JANVIER LABS in order to perform the ordered SERVICES.

JANVIER LABS shall not acquire any right over the BIOLOGICAL MATERIAL and the RESULTS which are descendants, derived from the entrusted strains.

2. The murine strains described in the CATALOGUE shall remain the property and/or remain under the exclusive control of JANVIER LABS, which shall retain all the intellectual property associated with the PRODUCTS, photos and technical documentation. These cannot be communicated nor transferred without written consent of JANVIER LABS.

Moreover, any method, protocol, know-how used while the SERVICES' performance, and developed by JANVIER LABS or by any third party previously the SERVICES completion, are and shall respectively remain the exclusive property of JANVIER LABS or this third-party.

Any information, data or protocol provided to the CUSTOMER by JANVIER LABS shall belong to and/or remain under the control of JANVIER LABS.

3. The CUSTOMER shall undertake to use the RESEARCH MODELS exclusively for their in-house research conducted under their authority.

It is forbidden to transfer by any means and in particular, to sell, cede, rent out, give away or lend the RESEARCH MODELS, as well as their derived products and by-products. Any transfer of RESEARCH MODELS, their derived products and by-products must beforehand be allowed in writing by JANVIER LABS. This agreement shall be conditional upon, but not limited to: (i) the transfer being made without consideration; (ii) the RESEARCH MODELS, their derivatives and by-products being used exclusively for a specifically identified research project conducted under the authority of the CUSTOMER; and (iii) the rules of the MGI nomenclature being respected.

4. After complete payment of the PRODUCTS, the CUSTOMER shall have the right to use the said PRODUCTS, but only in a manner complying with the terms specified in paragraph 3 of this article. After complete payment for the SERVICES, the CUSTOMER is entitled to use the information transmitted by JANVIER LABS for their internal purposes, related to the use of the RESULTS, without any other possibility of using them, in particular in aim to reproduce, breed, copy and/or market them.

5. The CUSTOMER shall not allow the transfer of the JAXTM Sperm Cryo Kit acquired from JANVIER LABS, outside of JANVIER LABS/licenced territory: France, Austria, Belgium, Czech Republic, Germany, Hungary, Italy, the Netherlands, Poland, Slovakia, Spain, Switzerland, Denmark, Finland, Norway, Sweden, GB.

No warranty is given on the JAX tm brand products, including the sperm cryo-conservation kit.

#### LIABILITY

1. The warranty on the PRODUCTS is limited to the replacement or reimbursement of the non-compliant or defective PRODUCTS.

2. JANVIER LABS' liability, regardless of the nature and form of the action, is limited to direct and certain material damages, up to the amount of the disputed ORDER only. Consequently, and without this list being exhaustive, immaterial damage, operating losses and/or losses of opportunities suffered by the CUSTOMER are expressly excluded from any compensation on the part of JANVIER LABS.

3. JANVIER LABS is not responsible for decisions made by the CUSTOMER or by any third party on the CUSTOMER's behalf, in particular with regard to the choice of the PRODUCTS ordered. It is up to the CUSTOMER and to the CUSTOMER alone, as a professional, to judge the suitability of the

PRODUCTS he had chosen, for its research objectives and needs.

#### FORCE MAJEURE

JANVIER LABS cannot be held liable of the non-execution or delay in execution of any of its duties resulting from a case of Force Majeure.

It is expressly agreed that in particular the following constitute Force Majeure: any difficulty of production or shipping due to bad weather, acts of war, a lock-out, a total or partial external or internal strike, or other work conflicts, acts of terrorism, decisions from a legal authority, fire, flood, riots, pandemic, war, explosion or other serious disturbances of the production or operation of JANVIER LABS, Information Technology break-downs, changes of standards or regulations, in particular in the countries of delivery or the production of PRODUCTS or RESULTS, import or export restrictions, interruptions or the slowing of procurements or transport, whether these events directly or indirectly affect JANVIER LABS or its suppliers or hauliers, as well as any event independent of the willingness of JANVIER LABS and affecting the execution of its obligations.

The obligation completion is suspended along the Force Majeure period. As soon as the cause for the suspension of the obligation is no longer present, JANVIER LABS shall make its best efforts to restart the normal execution of the contractual obligations, as quickly as possible. If the hindrance is permanent or exceeds one (1) month, the ORDER could be cancelled eight (8) days after receipt of a registered letter with acknowledgement of receipt or any extra judicial action mentioning the intention to cancel the sale.

The suspension of the obligations or the cancellation of the ORDER because of force majeure, can neither occur any liability for non-execution of the obligation in cause, nor justify any request of damages and interest nor of late penalties. During the suspension, each Party shall bear its own expenses raised from the situation.

#### INSURANCE

Each Party shall undertake to take out civil liability insurance with a recognised solvent insurance company.

#### CONFIDENTIALITY - PERSONAL DATA PROTECTION

1. Any information given or protocol transferred by JANVIER LABS to the CUSTOMER related to the order, shall be considered as confidential. Any communication of these documents to a third-party must be beforehand authorised by JANVIER LABS, who may refuse for just reasons.

This confidentiality shall not apply to (i) information that was already publicly available prior to its disclosure, or (ii) information lawfully received from a third party, or (iii) information that was already in CUSTOMER's possession prior to the ORDER, or (iv) information required to be disclosed by law.

This obligation is valid during the execution of the ORDER and for a period of five (5) years after its execution.

2. As a data controller, JANVIER LABS can stock, process and use personal data of individuals intervening for the CUSTOMER, for the needs of the contract. Personal data collected via ORDERS placed are necessary for managing the ORDER and its completion.

This data can be communicated internally by JANVIER LABS, in particular within sales, technical and administrative teams. They may be intended for external service providers that the data controller may call upon, in particular, and without this list being exhaustive, for the sending of invoices, transport or delivery related to the ORDER. The data is not transferred outside the European Union.

Personal data shall be kept for the whole period of validity of the JANVIER LABS offer and of the ORDER until the respective execution of the obligations of the Parties. They shall be archived for the conservation period of commercial documents, set by law.

The CUSTOMER, and more particularly his staff concerned, has a right of access, rectification, opposition, limitation of processing, deletion and portability of his data, which he can exercise by e-mail to the following address [contact@janvier-labs.com](mailto:contact@janvier-labs.com), specifying his name, first name, address and attaching a copy of both sides of his identity card.

In case of difficulty in connection with the management of his personal data, the CUSTOMER and his staff may file a complaint with the CNIL (COMMISSION NATIONALE DE L'INFORMATIQUE et des LIBERTES) or with any other competent authority.

The CUSTOMER undertakes to inform all persons acting on its behalf, and in particular its partners, representatives, employees and agents, of their rights under this clause.

#### RESOLUTION

1. Notwithstanding the provisions of Article 1221 of the Civil Code, in the event of a failure by one of the Parties to meet its obligations, the Party that has suffered such failure may not seek enforcement in kind, except in the case of an obligation to pay amounts due.

2. Likewise, notwithstanding the provisions of Article 1222 of the Civil Code, the injured Party may not itself have the obligation performed by any third party, at the expense of the defaulting Party. However, it may request in court that the defaulting Party advance the sums necessary for such performance.

3. In accordance with Article 1223 of the Civil Code, the Party that is the victim of the default of the other Party may otherwise notify it, as soon as possible, of its decision to accept imperfect performance of the obligation, with a proportional reduction in the price; as soon as the formal notice that it has sent by registered letter with reasoned notice of receipt has remained without effect fifteen (15) calendar days after its receipt.

The failing Party which intends to accept the price reduction shall have its decision known in writing.

Should the Parties fail to agree, provisions of the article "APPLICABLE LAW - JURISDICTIONAL COMPETENCE" shall apply.

4. In the event of non-payment of the sums owed to JANVIER LABS, and fifteen (15) days after formal notice has not led to full payment, JANVIER LABS may proceed with the cancellation of the ORDER in question, at the expense of the CUSTOMER, i.e. without compensation for the CUSTOMER; and notwithstanding the compensation of the entire prejudice suffered by JANVIER LABS, which will retain the amounts already received, including any penalties to be applied to the compensation of its prejudice.

5. The provisions of these general terms and conditions of sale appearing in the sections entitled "PROPERTY", "LIABILITY", "CONFIDENTIALITY - PROTECTION OF PERSONAL DATA" and "APPLICABLE LAW - JURISDICTIONAL COMPETENCE" shall remain applicable despite the rescission, cancellation or nullity of the ORDER, whatever the form or reason.

#### APPLICABLE LAW - JURISDICTIONAL COMPETENCE

1. Any question directly or indirectly concerning the present CGV or an operation of purchase or sale which arises from it, shall be subject to French law to the exclusion of any International or European treaty or agreement, including the VIENNA convention of 1969.

2. The CGVs are written in French. Although they are translated into one or more languages, only the French text shall deem authentic, in case of dispute.

3. Failing an amicable settlement, any dispute directly or indirectly relating to an ORDER or the CGVs, shall be EXCLUSIVELY submitted to the COMPETENT (FRENCH) COURT OF THE REGISTERED OFFICE OF JANVIER LABS, EVEN IN THE CASE OF SEVERAL JURISDICTIONS OR RECOURSE IN WARRANTY.

4. If any of the provisions of the present CGVs are declared as unwritten and/or null and void by a Court or any other administration or authority, such a decision shall under no circumstances affect the validity of the other provisions. The Parties shall endeavour to reach agreement on the terms of a fair term or part of a term to replace the term so declared void.



# JANVIER LABS AND YOU



Route des chênes secs  
53941 Le Genest Saint Isle  
FRANCE

T.+33 (0)2 43 02 11 91  
F.+33 (0)2 43 02 00 15

[contact@janvier-labs.com](mailto:contact@janvier-labs.com)