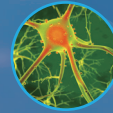
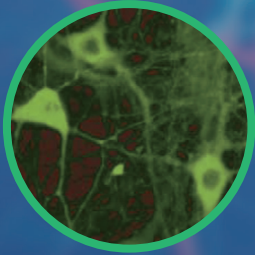


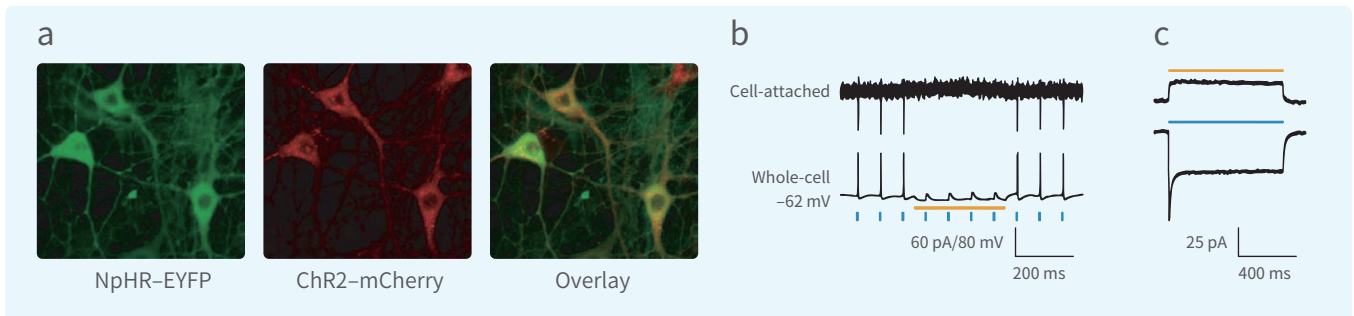
# Intelligent Optogenetics System

IOS-465



## Product introduction

Optogenetics uses light-responsive proteins to control biological processes. The unmatched spatiotemporal precision, high tunability, reversibility, and few side effects of light makes optogenetics a powerful strategy to study neuroscience and complex biological systems.



## Features

RWD new intelligent optogenetics system, on the basis of the last generation of integrated machines (laser and waveform generator integrated into one), has made another leap in the promotion. The new system is equipped with remote control function, one-click test conversion and three signal triggering modes to meet diversified experimental requirements.

### Edge mode1:

If the trigger voltage is higher than or equal to the set value of trigger voltage, the program will run; the trigger is only featured by the "on" function and the program's duration depends on its set duration.

### Real-time mode2:

If the trigger voltage is higher than or equal to the set value of trigger voltage, the program will run; if it is lower than that value, the program will stop; the trigger is featured by the "on/off" functions. The program's duration depends on the trigger's duration.

### Gate mode3:

the running power relies on the first subprogram selected and other parameters are defined by the external device, and only square wave at the frequency  $\leq 500\text{Hz}$  are responded to.

## Benefits



High Stability



Remote Control



Fast Response



Multiple Trigger Modes

## Technical parameters

Power: 0-100mW, 1mW resolution

Stability: <1%

Remote control: 10m

Input: 2V-10V

Output: 10mV-5V

Trigger mode: Edge/Real-Time/Gate

Safety: password; high temperature alarm; program run prompt

Storage: internal memory/ USB flash disk

Wavelength: 450, 465, 532, 589 and 610 nm (optional)

### **RWD Life Science Co.,Ltd**

**Add:** 19-20/F, Building 7A, Shenzhen International Innovation Valley, Dashi 1<sup>st</sup>Road, Nanshan District, Shenzhen, Guangdong, P.R. China      **E-mail:** [rwd@rwdstco.com](mailto:rwd@rwdstco.com)

### **RWD Life Science Inc.**

**Tel:** (858)900-5879      **Support:** [service@rwdls.com](mailto:service@rwdls.com)      **Web:** [www.rwdstco.com](http://www.rwdstco.com)

RWD Intelligent Optogenetics System-Flyer page-V1.0-2021-01-18 -EN