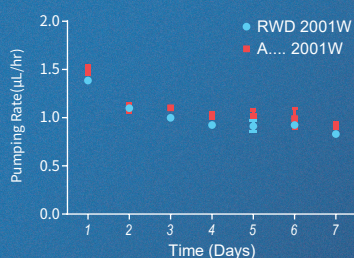


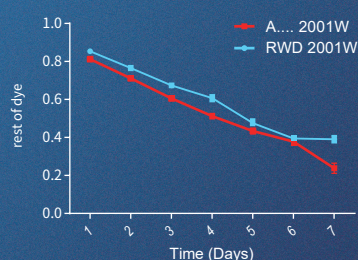
Mini Osmotic Pump

The mini osmotic pump has become the best tool for continuous dose of unrestrained laboratory animals. It can be implanted subcutaneously or intraperitoneally in animals. Minimizes side effects and experimental variables, and reduces the risk of stress due to frequent animal handling. And it is used for continuous delivery of a wide range of drugs, including antibodies, growth factors, cytokines, chemotherapeutics, addictive drugs, hormones, steroids and more.

Pumping rate of RWD 2001W and A.... 2001W in vivo

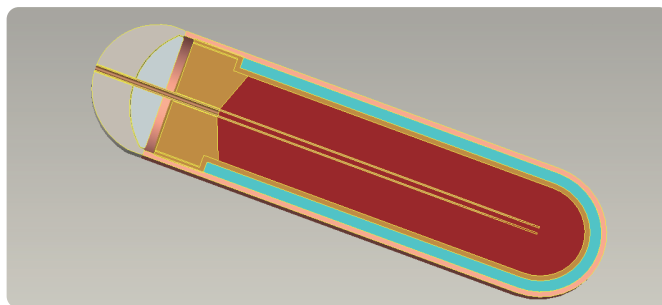
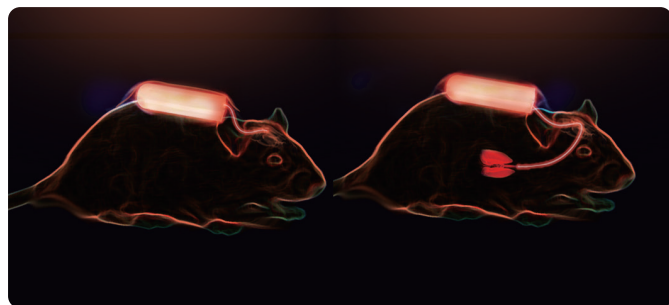


Rest of dye in RWD 2001W and A.... 2001W in vivo



Advantages

- Animals are dosed continuously at the predetermined dose for extended periods, including nights and weekends;
- Easy to use, without complex programming or software to learn;
- Once implanted, they operate unattended for durations up to 4 week, eliminating the need for repetitive dosing & frequent animal handling;
- Small size, available for use in mice, rat and larger animals;
- Catheter attachment enables direct administration of agents into a specific organ or tissue.



The RWD Osmotic Pumps consist of three concentric layers: the inner drug reservoir the osmotic layer, and the outer. When the pump is implanted water is absorbed through the outer membrane. The water entering the pump expands the osmotic layer, which compresses the flexible, impermeable reservoir.

Product standard

| | | | | | | | | | | |
|----------------|----------------------|---------------------------------------|-------|-------|-------------|-------|-------|-------|-------|-----|
| Capsule | Drug capacity | 100μL | | | 200μL | | | 2 mL | | |
| | Type | 1003D | 1001W | 1002W | 2003D | 2001W | 2002W | 2ml1W | 2ml2W | 2ml |
| | Duration | 3D | 1W | 2W | 3D | 1W | 2W | 1W | 2W | 4W |
| | Pumping Rate (μL/hr) | 1.0 | 0.5 | 0.25 | 1.0 | 0.5 | 0.25 | 10.0 | 5.0 | 2.5 |
| Flow regulator | Cap | Without | | | PE material | | | | | |
| | Draft tube | 304 stainless steel material | | | | | | | | |
| Infusion tube | Syringe | Flat head for the injection of liquid | | | | | | | | |

Standard Kits

| Name | Quantity |
|----------------|----------|
| Capsule | 10 |
| Flow moderator | 10 |
| Filling tube | 1 |
| Product manual | 1 |



Choice Kits



| Name | Quantity | Standard |
|----------------|----------|-----------|
| Catheter | 10 root | 15cm |
| CCT kit | 1 bottle | 4 package |
| Product manual | 1 | |

Brain infusion Kits

| Name | Quantity |
|---|----------|
| Infusion casing | 10 |
| Connect catheter (ethylene or polyethylene) | 10 |
| Depth adjustment gaskets | 1 |
| Product manual | 1 |



RWD Life Science Co.,Ltd

Add: 19-20/F, Building 7A, Shenzhen International Innovation Valley, Dashi 1st Road, Nanshan District, Shenzhen, Guangdong, P.R. China Enquiries: market@rwdstco.com

RWD Life Science Inc.

Add: 850 New Burton Road, Suite 201, Dover, DE 19904 (New Office)

Tel: (858)900-5879 E-mail: service@rwdls.com

RWD Mini Osmotic Pump Brochure V1.0-20201211-EN

.....